



# SZABO SCANDIC

Part of Europa Biosite

## Produktinformation



Forschungsprodukte & Biochemikalien



Zellkultur & Verbrauchsmaterial



Diagnostik & molekulare Diagnostik



Laborgeräte & Service

Weitere Information auf den folgenden Seiten!  
See the following pages for more information!



### Lieferung & Zahlungsart

siehe unsere [Liefer- und Versandbedingungen](#)

### Zuschläge

- Mindermengenzuschlag
- Trockeneiszuschlag
- Gefahrgutzuschlag
- Expressversand

### SZABO-SCANDIC HandelsgmbH

Quellenstraße 110, A-1100 Wien

T. +43(0)1 489 3961-0

F. +43(0)1 489 3961-7

[mail@szabo-scandic.com](mailto:mail@szabo-scandic.com)

[www.szabo-scandic.com](http://www.szabo-scandic.com)

[linkedin.com/company/szaboscandic](https://www.linkedin.com/company/szaboscandic) 

## Cytochrome P450 3A5. Mouse Monoclonal Antibody

CYP3A5; CYP450 3A5 (EC 1.14.14.1), Nifedipine oxidase, CYP11A5, P450-PCN3, HLP2

### BACKGROUND

CYP3A genes encode monooxygenases, enzymes which catalyze drug metabolism and the synthesis of cholesterol, steroids and other lipids. CYP3A (cytochrome P450, family 3, subfamily A), the most abundant p450 enzyme in human liver, is responsible for the metabolism of more than 50% of all clinical drugs. CYP3A members localize in organs that associate with drug disposition, including the liver, gastrointestinal tract and kidney. The CYP3A cluster consists of four genes: CYP3A43, CYP3A4, CYP3A7 and CYP3A5, and two pseudogenes: CYP3A5P1 and CYP3A5P2. The CYP3A cluster maps to gene locus 7q21.3-q22.1.

### ORDERING INFORMATION

#### CATALOG NUMBER

X2047M

#### SIZE

200 µg

#### FORM

Unconjugated

#### HOST/CLONE

Mouse Clone F18 P3 B6

#### FORMULATION

Provided as solution in phosphate buffered saline with 0.08% sodium azide

#### CONCENTRATION

See vial for concentration

#### ISOTYPE

IgG1

#### APPLICATIONS

ELISA, Western Blot, Immunohistochemistry

#### SPECIES REACTIVITY

Human

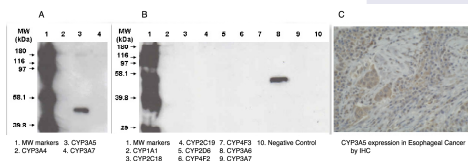
#### ACCESSION NUMBER

Human P20815

### IMMUNOGEN

Hybridoma produced by the fusion of splenocytes from BALB/c mice immunized with a synthetic peptide derived from the C-terminus of the human CYP3A5 protein and mouse myeloma Ag8563 cells.

A. and B. Western blot using 3A5 antibody (Cat. No. X2047M) on recombinant CYP450 proteins. C. Immunohistochemistry stain using 3A5 antibody on oesophagus cancer tissue.



**POSITIVE CONTROL/TISSUE EXPRESSION**

Squamous oesophagus cancer

**COMMENTS**

Antibody can be used for Western blotting (1-2 µg/ml) and immunohistochemistry on formalin-fixed, paraffin-embedded tissues (1-5 µg/ml). When used in conjunction with CYP3A7 (Cat. No. X2048M), can differentiate between the CYP3A family members, 3A5 and 3A7. Optimal concentration should be evaluated by serial dilutions.

**PURIFICATION**

Protein A/G Chromatography

**SHIP CONDITIONS**

Ship at ambient temperature, freeze upon arrival

**STORAGE CUSTOMER**

Product should be stored at -20°C. Aliquot to avoid freeze/thaw cycles

**STABILITY**

Products are stable for one year from purchase when stored properly

**REFERENCES**

1. Kumarakasingham, M., et al. (2005). Cytochrome p450 profile of colorectal cancer: Identification of markers of prognosis. *Clin. Cancer Res.* 11(10);3758-3765.
2. McCune, J.S., et al (2005). Contribution of CYP3A5 to hepatic and renal ifosfamide N-dechloroethlation. *Drug Metab. Dispos.* 33(7);1074-1081.
3. Kim, K.A., et al. (2007). Effect of polymorphic CYP3A5 genotype on the single-dose simvastatin pharmacokinetics in healthy subjects. *J. Clin. Pharmacol.* 47(1);87-93

**PRODUCT SPECIFIC REFERENCES**