



# SZABO SCANDIC

Part of Europa Biosite

## Produktinformation



Forschungsprodukte & Biochemikalien



Zellkultur & Verbrauchsmaterial



Diagnostik & molekulare Diagnostik



Laborgeräte & Service

Weitere Information auf den folgenden Seiten!  
See the following pages for more information!



### Lieferung & Zahlungsart

siehe unsere [Liefer- und Versandbedingungen](#)

### Zuschläge

- Mindermengenzuschlag
- Trockeneiszuschlag
- Gefahrgutzuschlag
- Expressversand

### SZABO-SCANDIC HandelsgmbH

Quellenstraße 110, A-1100 Wien

T. +43(0)1 489 3961-0

F. +43(0)1 489 3961-7

[mail@szabo-scandic.com](mailto:mail@szabo-scandic.com)

[www.szabo-scandic.com](http://www.szabo-scandic.com)

[linkedin.com/company/szaboscandic](https://www.linkedin.com/company/szaboscandic) 

**Cytochrome P450 3A7. Mouse Monoclonal Antibody**  
CYP3A7; CYP450 3A7 (EC 1.14.14.1), CYP3A7, P450-HFLA

**BACKGROUND**

CYP3A genes encode monooxygenases, enzymes which catalyze drug metabolism and the synthesis of cholesterol, steroids and other lipids. CYP3A (cytochrome P450, family 3, subfamily A), the most abundant P450 enzyme in human liver, is responsible for the metabolism of more than 50% of all clinical drugs. CYP3A members localize in organs that associate with drug disposition, including the liver, gastrointestinal tract and kidney. The CYP3A cluster consists of four genes: CYP3A43, CYP3A4, CYP3A7 and CYP3A5, and two pseudogenes: CYP3A5P1 and CYP3A5P2. The CYP3A cluster maps to gene locus 7q21.3-q22.1.

**ORDERING INFORMATION**

**CATALOG NUMBER**  
X2048M

**SIZE**  
200 µg

**FORM**  
Unconjugated

**HOST/CLONE**  
Mouse Clone F19 P2 H2

**FORMULATION**  
Provided as solution in phosphate buffered saline with 0.08% sodium azide

**CONCENTRATION**  
See vial for concentration

**ISOTYPE**  
IgG1

**APPLICATIONS**  
ELISA, Western Blot, Immunohistochemistry

**SPECIES REACTIVITY**  
Human

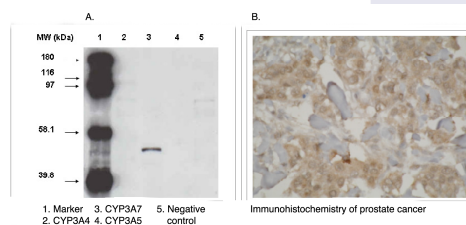
**ACCESSION NUMBER**  
Human Q9H241

**IMMUNOGEN**

Hybridoma produced by the fusion of splenocytes from BALB/c mice immunized with a synthetic peptide derived from the C-terminus of the human CYP3A7 protein and mouse myeloma Ag8563 cells.

A. Western blot analysis using CYP3A7 antibody (cat. no. X2048M) on various recombinant CYP450 proteins.

B. Immunohistochemistry staining of prostate cancer tissue using CYP3A7 antibody.



**POSITIVE CONTROL/TISSUE EXPRESSION**

Prostate cancer

**COMMENTS**

Antibody can be used for Western blotting (1-2  $\mu\text{g/ml}$ ) and immunohistochemistry on formalin-fixed, paraffin-embedded tissue sections (1-5  $\mu\text{g/ml}$ ). When used in conjunction with CYP3A5 (Cat. No. X2047M), can differentiate between the CYP3A family members, 3A5 and 3A7. Optimal concentration should be evaluated by serial dilutions.

**PURIFICATION**

Protein A/G Chromatography

**SHIP CONDITIONS**

Ship at ambient temperature, freeze upon arrival

**STORAGE CUSTOMER**

Product should be stored at  $-20^{\circ}\text{C}$ . Aliquot to avoid freeze/thaw cycles

**STABILITY**

Products are stable for one year from purchase when stored properly

**REFERENCES**

1. Kumarakasingham, M., et al. (2005). Cytochrome p450 profile of colorectal cancer: Identification of markers of prognosis. *Clin. Cancer Res.* 11(10);3758-3765.
2. Leeder, J.S., et al. (2005). Variability of CYP3A7 expression in human fetal liver. *J. Pharmacol. Exp. Ther.* 314(2);626-635.
3. Ogino, M., et al. (2002). Selective suppressions of human CYP3A forms, CYP3A5 and CYP3A7, by troglitazone in HepG2 cells. *17(1);42-46.*

**PRODUCT SPECIFIC REFERENCES**