



SZABO SCANDIC

Part of Europa Biosite

Produktinformation



Forschungsprodukte & Biochemikalien



Zellkultur & Verbrauchsmaterial



Diagnostik & molekulare Diagnostik



Laborgeräte & Service

Weitere Information auf den folgenden Seiten!
See the following pages for more information!



Lieferung & Zahlungsart

siehe unsere [Liefer- und Versandbedingungen](#)

Zuschläge

- Mindermengenzuschlag
- Trockeneiszuschlag
- Gefahrgutzuschlag
- Expressversand

SZABO-SCANDIC HandelsgmbH

Quellenstraße 110, A-1100 Wien

T. +43(0)1 489 3961-0

F. +43(0)1 489 3961-7

mail@szabo-scandic.com

www.szabo-scandic.com

[linkedin.com/company/szaboscandic](https://www.linkedin.com/company/szaboscandic) 

Sphingomyelin Synthase 2. Rabbit Antigen Immunoaffinity Purified Polyclonal

Phosphatidylcholine:ceramide cholinephosphotransferase 2, Sphingomyelin synthase 2, SMS2

BACKGROUND

Sphingomyelin (SM) is a major component of animal plasma membranes. Its production involves the transfer of phosphocholine from phosphatidylcholine and then onto ceramide. This also yields diacylglycerol as a side product. The reaction is catalysed by SM synthase, an important enzyme in the regulation of diacylglycerol and ceramide as anti- and proapoptotic stimuli. SM synthesis occurs in the lumen of the Golgi as well as on or at the cell surface. It is uncertain which SM enzyme forms are present at these different cellular locations. Human, mouse and *Caenorhabditis elegans* genomes each contain at least two different SM synthase (SMS) genes. Human SMS1 is localised to the Golgi, SMS2 resides primarily at the plasma membrane.

ORDERING INFORMATION

CATALOG NUMBER

X2059P

SIZE

10 Miniblots

FORM

Affinity Purified

HOST/CLONE

Rabbit

FORMULATION

Purified IgG in phosphate buffered saline, pH 7.4

CONCENTRATION

Lot specific, see vial

ISOTYPE

IgG

APPLICATIONS

Western Blot

SPECIES REACTIVITY

Human

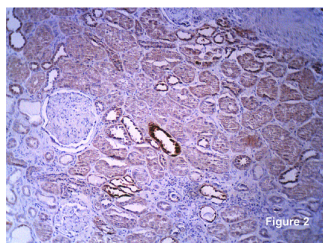
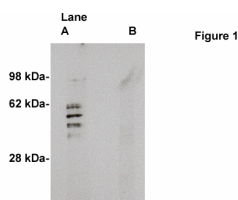
ACCESSION NUMBER

Human Q8NHU3

IMMUNOGEN

Synthetic peptide derived from the human sphingomyelin synthase 2 protein.

Fig 1. Western blot on human brain lysate (10 ug/lane) using Exalpha's X2059P antibody to Sphingomyelin Synthase 2 (0.5 ug/ml). Lane A] 1 ug/ml antibody alone, lane B] antibody plus 3 ug blocking peptide. Blot was developed with Pierce's Super Sytem West Femto - 1 minute exposure. Fig 2. Human kidney section stained with Exalpha's anti-SMS-2 antibody (Cat X2059P) at 2 ug/ml. Anti-rabbit Ig H+L HRP conjugate (5 ug/ml) without antigen retrieval.



POSITIVE CONTROL/TISSUE EXPRESSION

Brain, heart, kidney, liver, muscle and stomach.

COMMENTS

Antibod can be used for Western blotting (1:400 starting dilution) and immunohistochemistry (1:400 starting dilution)
Optimal concentration should be evaluated by serial dilutions.

PURIFICATION

Antigen Immunoaffiinity Purification

SHIP CONDITIONS

Ship at ambient temperature, freeze upon arrival

STORAGE CUSTOMER

Product should be stored at -20°C. Aliquot to avoid freeze/thaw cycles

STABILITY

Products are stable for one year from purchase when stored properly

REFERENCES

1. Huitema K, van den Dikkenberg J, Brouwers JF, Holthuis JC Identification of a family of animal sphingomyelin synthases. EMBO J. 2004 Jan 14;23(1):33-44. Epub 2003 Dec 18.

PRODUCT SPECIFIC REFERENCES