



# SZABO SCANDIC

Part of Europa Biosite

## Produktinformation



Forschungsprodukte & Biochemikalien



Zellkultur & Verbrauchsmaterial



Diagnostik & molekulare Diagnostik



Laborgeräte & Service

Weitere Information auf den folgenden Seiten!  
See the following pages for more information!



### Lieferung & Zahlungsart

siehe unsere [Liefer- und Versandbedingungen](#)

### Zuschläge

- Mindermengenzuschlag
- Trockeneiszuschlag
- Gefahrgutzuschlag
- Expressversand

### SZABO-SCANDIC HandelsgmbH

Quellenstraße 110, A-1100 Wien

T. +43(0)1 489 3961-0

F. +43(0)1 489 3961-7

[mail@szabo-scandic.com](mailto:mail@szabo-scandic.com)

[www.szabo-scandic.com](http://www.szabo-scandic.com)

[linkedin.com/company/szaboscandic](https://www.linkedin.com/company/szaboscandic) 

## Sphingomyelin Synthase 1. Rabbit Antigen Immunoaffinity Purified Polyclonal

Phosphatidylcholine:ceramide cholinephosphotransferase 1 Transmembrane protein 23, Sphingomyelin synthase 1, Mob protein

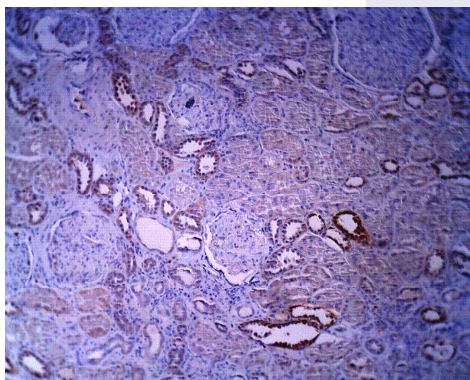
### BACKGROUND

A bidirectional lipid cholinephosphotransferases capable of converting phosphatidylcholine (PC) and ceramide to sphingomyelin (SM) and diacylglycerol (DAG) and the inverse reaction. Direction is dependent on the relative concentrations of DAG and ceramide as phosphocholine acceptors. Directly and specifically recognizes the choline head group on the substrate. Also requires two fatty chains on the choline-P donor molecule in order to be recognized efficiently as a substrate. May not function strictly as a SM synthase. Inhibited by bacterial PC-phospholipase C inhibitor D609. Localized to Golgi apparatus; Golgi membrane; multi-pass membrane protein. Possibly present on Brain, heart, kidney, liver, muscle and stomach.

### IMMUNOGEN

Synthetic peptide derived from the human sphingomyelin synthase 1 protein

Human kidney section stained with Exalpa's anti-SMS-1 antibody (Cat X2065P) at 2 ug/ml. Anti-rabbit Ig H +L HRP conjugate (5 ug/ml) without antigen retrieval.



### ORDERING INFORMATION

**CATALOG NUMBER**  
X2065P

**SIZE**  
10 Miniblots

**FORM**  
Unconjugated

**HOST/CLONE**  
Rabbit

**FORMULATION**  
Provided as ligand affinity purified antibody in phosphate buffered saline with 0.08% sodium azide

**CONCENTRATION**  
See vial for concentration

**ISOTYPE**

**APPLICATIONS**  
ELISA, Western Blot, Immunohistochemistry

**SPECIES REACTIVITY**  
Human, Mouse

**ACCESSION NUMBER**  
Human Q86VZ5

**POSITIVE CONTROL/TISSUE EXPRESSION**

Brain, heart, kidney, liver, muscle and stomach.

**COMMENTS**

Antibody can be used for Western blotting (5-10  $\mu\text{g/ml}$ ). Optimal concentration should be evaluated by serial dilutions.

**PURIFICATION****SHIP CONDITIONS**

Ship at ambient temperature, freeze upon arrival

**STORAGE CUSTOMER**

Product should be stored at  $-20^{\circ}\text{C}$ . Aliquot to avoid freeze/thaw cycles

**STABILITY**

Products are stable for one year from purchase when stored properly

**REFERENCES**

1. Huitema K, van den Dikkenberg J, Brouwers JF, Holthuis JC Identification of a family of animal sphingomyelin synthases. EMBO J. 2004 Jan 14;23(1):33-44. Epub 2003 Dec 18.

**PRODUCT SPECIFIC REFERENCES**