



SZABO SCANDIC

Part of Europa Biosite

Produktinformation



Forschungsprodukte & Biochemikalien



Zellkultur & Verbrauchsmaterial



Diagnostik & molekulare Diagnostik



Laborgeräte & Service

Weitere Information auf den folgenden Seiten!
See the following pages for more information!



Lieferung & Zahlungsart

siehe unsere [Liefer- und Versandbedingungen](#)

Zuschläge

- Mindermengenzuschlag
- Trockeneiszuschlag
- Gefahrgutzuschlag
- Expressversand

SZABO-SCANDIC HandelsgmbH

Quellenstraße 110, A-1100 Wien

T. +43(0)1 489 3961-0

F. +43(0)1 489 3961-7

mail@szabo-scandic.com

www.szabo-scandic.com

[linkedin.com/company/szaboscandic](https://www.linkedin.com/company/szaboscandic) 

Serine Palmitoyltransferase 1. Rabbit Antigen Immunoaffinity Purified Polyclonal
Long chain base biosynthesis protein 1; LCB-1; LCB1; Serine-palmitoyl-CoA transferase 1; SPT1; SPT 1; SPT-1

BACKGROUND

Sphingolipids play essential roles in various cellular events, including proliferation, differentiation, senescence, apoptosis, and inflammatory responses. Serine palmitoyltransferase (SPT) is the initial and rate-limiting enzyme in the de novo sphingolipid biosynthesis, and thus regulates the level of sphingolipids in cells. Immunohistochemical study revealed widespread distribution of the enzyme with most strong expression in brain and digestive tract. Two subunits, SPT1 and SPT2 at a stoichiometry of 1:1, are involved in the enzymatic activity of SPT.

ORDERING INFORMATION

CATALOG NUMBER
X2066P

SIZE
10 Miniblots
FORM
Unconjugated

HOST/CLONE
Rabbit

FORMULATION
Provided as ligand affinity purified antibody in phosphate buffered saline with 0.08% sodium azide

CONCENTRATION
See vial for concentration

ISOTYPE
IgG

APPLICATIONS
Western Blot, Immunohistochemistry

SPECIES REACTIVITY
Human

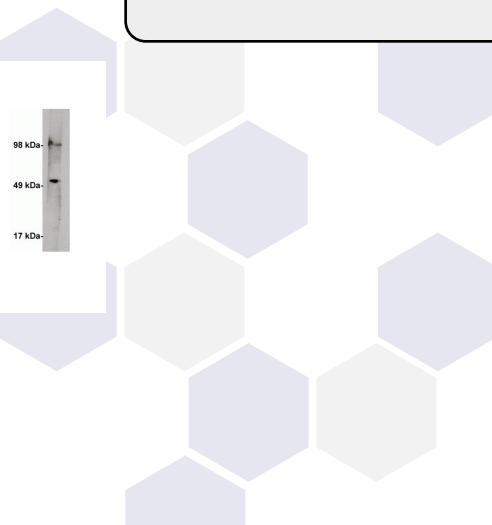
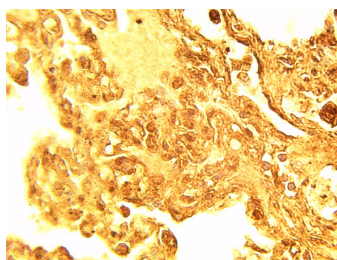
ACCESSION NUMBER
Human O15269

IMMUNOGEN

Synthetic peptide derived from the human serine palmitoyltransferase enzyme.

Left: Immunohistochemical staining of normal human lung tissue with serine palmitoyltransferase 1 antibody (Cat. No. X2066P) at 15 μ g/ml.

Right: Western blot on human kidney lysate (10 ug/lane) using Exalpha's anti Serine palmitoyltransferase 1 antibody (cat X2066P) at 1 ug/ml. Blot was developed using anti rabbit HRP at 1:75k and Pierce's Supersignal West Femto. Exposure was 2 minutes.



POSITIVE CONTROL/TISSUE EXPRESSION

Ubiquitously expressed

COMMENTS

Antibody can be used for Western blotting (1-5 $\mu\text{g/ml}$) and immunohistochemistry (5-10 $\mu\text{g/ml}$). Optimal concentration should be evaluated by serial dilutions.

PURIFICATION

Antigen Immunoaffinity Purification

SHIP CONDITIONS

Ship at ambient temperature, freeze upon arrival

STORAGE CUSTOMER

Product should be stored at -20°C . Aliquot to avoid freeze/thaw cycles

STABILITY

Products are stable for one year from purchase when stored properly

REFERENCES

1. He, X., et al. (2007). Expression, activity and role of serine palmitoyltransferase in the rat hippocampus after kainate injury. *J. Neurosci. Res.* 85(2);423-432
2. Hornemann, T., et al. (2006). Cloning and initial characterization of a new subunit for mammalian serine-palmitoyltransferase. *J. Biol. Chem.* 281(49);37275-37281
3. Hanada, K. (2003). Serine palmitoyltransferase, a key enzyme of sphingolipid metabolism. 1632(1-3);16-30

PRODUCT SPECIFIC REFERENCES