



SZABO SCANDIC

Part of Europa Biosite

Produktinformation



Forschungsprodukte & Biochemikalien



Zellkultur & Verbrauchsmaterial



Diagnostik & molekulare Diagnostik



Laborgeräte & Service

Weitere Information auf den folgenden Seiten!
See the following pages for more information!



Lieferung & Zahlungsart

siehe unsere [Liefer- und Versandbedingungen](#)

Zuschläge

- Mindermengenzuschlag
- Trockeneiszuschlag
- Gefahrgutzuschlag
- Expressversand

SZABO-SCANDIC HandelsgmbH

Quellenstraße 110, A-1100 Wien

T. +43(0)1 489 3961-0

F. +43(0)1 489 3961-7

mail@szabo-scandic.com

www.szabo-scandic.com

[linkedin.com/company/szaboscandic](https://www.linkedin.com/company/szaboscandic) 



Neuron-Specific Enolase. Mouse Monoclonal Antibody
ENO2; Enolase 2, (gamma, neuronal); 2-Phospho-D-Glycerate Hydrolase

BACKGROUND

Enolases have been characterized as highly conserved cytoplasmic glycolytic enzymes that may be involved in differentiation. Three isoenzymes have been identified, α Enolase, β Enolase and γ Enolase. α Enolase expression has been detected on most tissues, whereas β Enolase is expressed predominantly in muscle tissue and γ Enolase is detected only in nervous tissue. These isoforms exist as both homodimers and heterodimers, and they play a role in converting phosphoglyceric acid to phosphoenolpyruvic acid in the glycolytic pathway.

ORDERING INFORMATION

CATALOG NUMBER
X2071M

SIZE
200 μ g
FORM
Unconjugated

HOST/CLONE
Mouse Clone NSE-P2

FORMULATION
Provided as solution in phosphate buffered saline with 0.08% sodium azide

CONCENTRATION
See vial for concentration

ISOTYPE
IgG1

APPLICATIONS
ELISA, Western Blot,
Immunohistochemistry

SPECIES REACTIVITY
Human, Mouse, Chicken

ACCESSION NUMBER
Human P09104

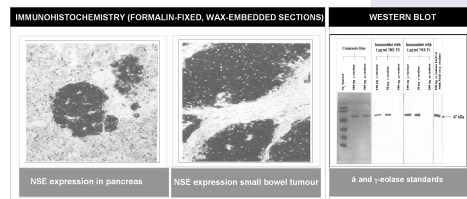
IMMUNOGEN

Hybridoma produced by the fusion of splenocytes from BALB/c mice immunized with a synthetic peptide derived from the human NSE protein and mouse myeloma Ag8563 cells. Sequence common in human, mouse and chicken.

Left and Center:

Immunohistochemical staining of normal pancreas tissue (left) and small bowel tumor tissue (center) using NSE antibody (X2070M and X2071M).

Right: Western blot analysis using NSE antibodies (X2070M and X2071M) on α and γ enolase standards.



POSITIVE CONTROL/TISSUE EXPRESSION

Serum, brain, pancreas, liver, skeletal muscle and endocrine tumors. Expression stronger in tumor versus normal tissue.

COMMENTS

Antibody can be used for Western blotting (1-2 $\mu\text{g/ml}$) and immunohistochemistry on formalin-fixed, paraffin-embedded tissue sections (1-5 $\mu\text{g/ml}$). Optimal concentration should be evaluated by serial dilutions.

PURIFICATION

Protein A/G Chromatography

SHIP CONDITIONS

Ship at ambient temperature, freeze upon arrival

STORAGE CUSTOMER

Product should be stored at -20°C . Aliquot to avoid freeze/thaw cycles

STABILITY

Products are stable for one year from purchase when stored properly

REFERENCES

1. Kang, J.L., et al. (1996). Immunoreactive neuron-specific enolase (NSE) is expressed in testicular carcinoma-in-situ. *J. Pathol.* 178(2):161-165.
2. Koch, M., et al. (2007). Plasma S100beta and NSE levels and progression in multiple sclerosis. *J. Neurol. Sci.* 252(2):154-158.
3. Oertel, M., et al. (2006). S-100B and NSE: markers of initial impact of subarachnoid haemorrhage and their relation to vasospasm and outcome. *J. Clin. Neurosci.* 13(8):834-840.

PRODUCT SPECIFIC REFERENCES