



# SZABO SCANDIC

Part of Europa Biosite

## Produktinformation



Forschungsprodukte & Biochemikalien



Zellkultur & Verbrauchsmaterial



Diagnostik & molekulare Diagnostik



Laborgeräte & Service

Weitere Information auf den folgenden Seiten!  
See the following pages for more information!



### Lieferung & Zahlungsart

siehe unsere [Liefer- und Versandbedingungen](#)

### Zuschläge

- Mindermengenzuschlag
- Trockeneiszuschlag
- Gefahrgutzuschlag
- Expressversand

### SZABO-SCANDIC HandelsgmbH

Quellenstraße 110, A-1100 Wien

T. +43(0)1 489 3961-0

F. +43(0)1 489 3961-7

[mail@szabo-scandic.com](mailto:mail@szabo-scandic.com)

[www.szabo-scandic.com](http://www.szabo-scandic.com)

[linkedin.com/company/szaboscandic](https://www.linkedin.com/company/szaboscandic) 

Lass4. Rabbit Antigen Immunoaffinity Purified Polyclonal

**BACKGROUND**

It is thought that Lass4 may be either a bona fide (dihydro)ceramide synthase or a modulator of its activity. When overexpressed in cells is involved in the production of sphingolipids containing different fatty acid donors (N-linked stearyl- (C18) or arachidoyl- (C20) ceramides) in a fumonisin B1-independent manner.

**ORDERING INFORMATION**

**CATALOG NUMBER**  
X2298P

**SIZE**

100 µg

**FORM**

Affinity Purified

**HOST/CLONE**

Rabbit

**FORMULATION**

Provided as solution in phosphate buffered saline with 0.08% sodium azide

**CONCENTRATION**

Lot specific, see vial

**ISOTYPE**

IgG

**APPLICATIONS**

Western Blot

**SPECIES REACTIVITY**

Human

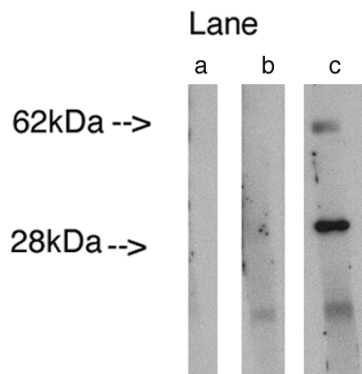
**ACCESSION NUMBER**

Human Q9HA82

**IMMUNOGEN**

Synthetic peptide derived from human Lass4 protein.

Western blot analysis using LAG1 longevity assurance homolog 4 (Cat. # X2298P) at 0.75ug/ml on human lung lysate 14 ug/lane. Lane A] conjugate alone, Lane B] antibody plus 27 ug blocking peptide (Cat. # X2299B ), Lane C] antibody alone. Visualized using Pierce West Femto substrate system. Anti Rabbit secondary used at 1:3.5K dilution (Cat. # X1207M). Exposure for 5 minutes



**POSITIVE CONTROL/TISSUE EXPRESSION**

Lung and embryo

**COMMENTS**

Antibody can be used for Western blotting (1:400 starting dilution). Optimal concentration should be evaluated by serial dilutions.

**PURIFICATION**

Antigen Immunoaffinity Purification

**SHIP CONDITIONS**

Ship on gel ice, store at -20°C immediately upon arrival

**STORAGE CUSTOMER**

Product should be stored at -20°C. Aliquot to avoid freeze/thaw cycles

**STABILITY**

Products are stable for one year from purchase when stored properly

**REFERENCES**

1. Min, J., et al. '(Dihydro)ceramide synthase 1 regulated sensitivity to cisplatin is associated with the activation of p38 mitogen-activated protein kinase and is abrogated by sphingosine kinase 1.' *Mol. Cancer Res.* 2007, 5(8):801-812
2. Ruckhaberle, E., et al. 'Microarray analysis of altered sphingolipid metabolism reveals prognostic significance of sphingosine kinase 1 in breast cancer.' *Breast Cancer Res Treat.* 2007 Dec 4 [Epub ahead of print]

**PRODUCT SPECIFIC REFERENCES**