



SZABO SCANDIC

Part of Europa Biosite

Produktinformation



Forschungsprodukte & Biochemikalien



Zellkultur & Verbrauchsmaterial



Diagnostik & molekulare Diagnostik



Laborgeräte & Service

Weitere Information auf den folgenden Seiten!
See the following pages for more information!



Lieferung & Zahlungsart

siehe unsere [Liefer- und Versandbedingungen](#)

Zuschläge

- Mindermengenzuschlag
- Trockeneiszuschlag
- Gefahrgutzuschlag
- Expressversand

SZABO-SCANDIC HandelsgmbH

Quellenstraße 110, A-1100 Wien

T. +43(0)1 489 3961-0

F. +43(0)1 489 3961-7

mail@szabo-scandic.com

www.szabo-scandic.com

[linkedin.com/company/szaboscandic](https://www.linkedin.com/company/szaboscandic) 

Lass3. Rabbit Antigen Immunoaffinity Purified Polyclonal
LAG1 longevity assurance homolog 3

BACKGROUND

LASS3 (Longevity Assurance homolog 3) is a member of a highly conserved family of proteins from yeast to humans which are involved in the synthesis of ceramide. Overproduction of LASS3 appears to result in increases in several ceramide species, with some preference toward those having middle to long chain fatty acid acyl-CoAs. Also appears to have (dihydro)ceramide synthesis activity. LASS3 expression appears to be limited almost solely to the testis.

ORDERING INFORMATION

CATALOG NUMBER
X2304P

SIZE
10 Miniblots

FORM
Affinity Purified

HOST/CLONE
Rabbit

FORMULATION
Provided as solution in phosphate buffered saline with 0.08% sodium azide

CONCENTRATION
Lot specific, see vial

ISOTYPE

APPLICATIONS
Western Blot

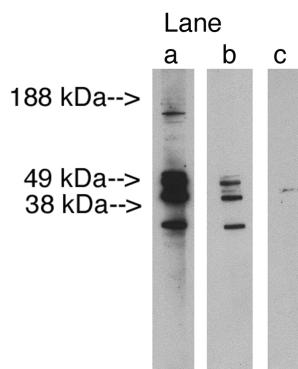
SPECIES REACTIVITY
Human

ACCESSION NUMBER
Human Q8IU89

IMMUNOGEN

Synthetic peptide derived from human LASS3 protein

Western blot analysis using LAG1 longevity assurance homolog 3 (Cat. X2304P) at 2.5 μ g/ml on human testis lysate 14 μ g/lane. Lane A] antibody alone, Lane B] antibody blocked with 40 μ g blocking peptide. Lane C] conjugate alone. Visualized using Pierce West Femto substrate system. Anti Rabbit secondary used at dilution used 1:3.5K (Cat. # X1207M). Exposure for 3 minutes



POSITIVE CONTROL/TISSUE EXPRESSION

Expression appears to be solely limited to the testis.

COMMENTS

Antibody can be used for Western blotting (1:400 starting dilution). Optimal concentration should be evaluated by serial dilutions.

PURIFICATION

Antigen Immunoaffinity Purification

SHIP CONDITIONS

Ship on gel ice, store at -20°C immediately upon arrival

STORAGE CUSTOMER

Product should be stored at -20°C. Aliquot to avoid freeze/thaw cycles

STABILITY

Products are stable for one year from purchase when stored properly

REFERENCES

Mizutani, Y., et al. 'LASS3 (longevity assurance homologue 3) is a mainly testis-specific (dihydro)ceramide synthase with relatively broad substrate specificity.' *Biochem. J.*, 2006, 398, 531-538.

PRODUCT SPECIFIC REFERENCES