



SZABO SCANDIC

Part of Europa Biosite

Produktinformation



Forschungsprodukte & Biochemikalien



Zellkultur & Verbrauchsmaterial



Diagnostik & molekulare Diagnostik



Laborgeräte & Service

Weitere Information auf den folgenden Seiten!
See the following pages for more information!



Lieferung & Zahlungsart

siehe unsere [Liefer- und Versandbedingungen](#)

Zuschläge

- Mindermengenzuschlag
- Trockeneiszuschlag
- Gefahrgutzuschlag
- Expressversand

SZABO-SCANDIC HandelsgmbH

Quellenstraße 110, A-1100 Wien

T. +43(0)1 489 3961-0

F. +43(0)1 489 3961-7

mail@szabo-scandic.com

www.szabo-scandic.com

[linkedin.com/company/szaboscandic](https://www.linkedin.com/company/szaboscandic) 

Lass2. Rabbit Antigen Immunoaffinity Purified Polyclonal
LAG1 longevity assurance homolog 2, Tumor metastasis-suppressor gene 1 protein, SP260

BACKGROUND

LASS2, a human homologue of the yeast longevity assurance gene LAG1 is highly expressed in liver and kidney as compared to the expression of the human LAG1 homologue LAG1Hs-1. LASS2 is located on chromosome 1q11. The LASS2 protein interacts with several membrane-associated receptors or transporters. LASS2 protein inhibits the colony formation of human hepatoma cells in vitro, which suggests that this gene may be involved in the regulation of cell growth.

ORDERING INFORMATION

CATALOG NUMBER
X2307P

SIZE

50 µg

FORM

Affinity Purified

HOST/CLONE

Rabbit

FORMULATION

Provided as solution in phosphate buffered saline with 0.08% sodium azide

CONCENTRATION

Lot specific, see vial

ISOTYPE

APPLICATIONS

Western Blot

SPECIES REACTIVITY

Human, Rat, Mouse

ACCESSION NUMBER

Human Q96G23

Mouse Q924Z4

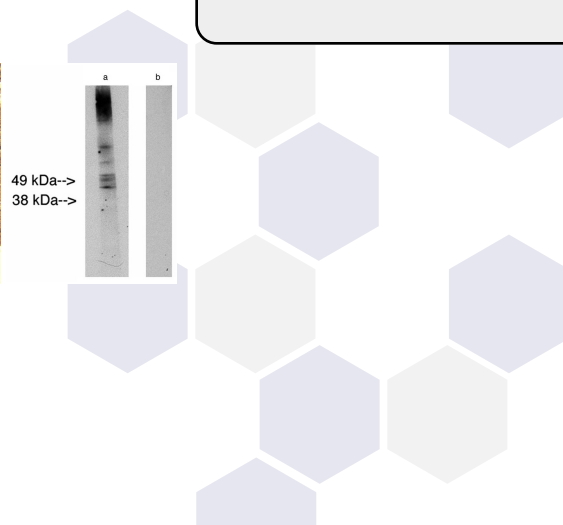
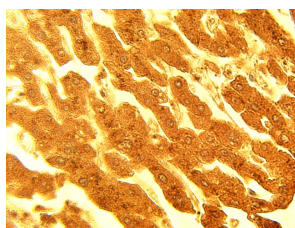
Rat Q3T1K1

IMMUNOGEN

Synthetic peptide derived from human Lass2 protein

Left: Immunohistochemical staining of normal human liver tissue using Lass2 antibody (Cat. No. X2307P) at 15 µg/ml.

Right: Western blot analysis using LAG1 longevity assurance homolog 2 (Cat. # X2307P) at 10ug/ml on human placenta lysate (Cat. # X1635C) 14 ug/lane. Lane A] antibody alone, Lane B] conjugate alone. Visualized using Pierce West Femto substrate system. Anti Rabbit secondary used at 1:10K dilution (Cat. # X1207M). Exposure for 5 minutes



POSITIVE CONTROL/TISSUE EXPRESSION

liver and kidney

COMMENTS

Antibody can be used for Western blotting (1:400 starting dilution) and immunohistochemistry (10-15 µg/ml). Optimal concentration should be evaluated by serial dilutions.

PURIFICATION

Antigen Immunoaffinity Purification

SHIP CONDITIONS

Ship on gel ice, store at -20°C immediately upon arrival

STORAGE CUSTOMER

Product should be stored at -20°C. Aliquot to avoid freeze/thaw cycles

STABILITY

Products are stable for one year from purchase when stored properly

REFERENCES

- 1: Becker I, Wang-Eckhardt L, Yaghootfam A, Gieselmann V, Eckhardt M. Differential expression of (dihydro)ceramide synthases in mouse brain: oligodendrocyte-specific expression of CerS2/Lass2. *Histochem Cell Biol.* 2008 Feb;129(2):233-41. Epub 2007 Sep 28.
- 2: Wang X, Carré W, Saxton AM, Cogburn LA. Manipulation of thyroid status and/or GH injection alters hepatic gene expression in the juvenile chicken. *Cytogenet Genome Res.* 2007;117(1-4):174-88.
- 3: Senkal CE, Ponnusamy S, Rossi MJ, Bialewski J, Sinha D, Jiang JC, Jazwinski SM, Hannun YA, Ogretmen B. Role of human longevity assurance gene 1 and C18-ceramide in chemotherapy-induced cell death in human head and neck squamous cell carcinomas. *Mol Cancer Ther.* 2007 Feb;6(2):712-22.
- 4: Yu Y, Lu H, Pan H, Ma JH, Ding ZJ, Li YY. Expression of LASS2 controlled by LAG1 or ADH1 promoters cannot functionally complement Lag1p. *Microbiol Res.* 2006;161(3):203-11. Epub 2005 Sep 22.

PRODUCT SPECIFIC REFERENCES