



# SZABO SCANDIC

Part of Europa Biosite

## Produktinformation



Forschungsprodukte & Biochemikalien



Zellkultur & Verbrauchsmaterial



Diagnostik & molekulare Diagnostik



Laborgeräte & Service

Weitere Information auf den folgenden Seiten!  
See the following pages for more information!



### Lieferung & Zahlungsart

siehe unsere [Liefer- und Versandbedingungen](#)

### Zuschläge

- Mindermengenzuschlag
- Trockeneiszuschlag
- Gefahrgutzuschlag
- Expressversand

### SZABO-SCANDIC HandelsgmbH

Quellenstraße 110, A-1100 Wien

T. +43(0)1 489 3961-0

F. +43(0)1 489 3961-7

[mail@szabo-scandic.com](mailto:mail@szabo-scandic.com)

[www.szabo-scandic.com](http://www.szabo-scandic.com)

[linkedin.com/company/szaboscandic](https://www.linkedin.com/company/szaboscandic) 



## Lass2. Rabbit Polyclonal Antibody

LAG1 longevity assurance homolog 2, Tumor metastasis-suppressor gene 1 protein, SP260

### BACKGROUND

LASS2, a human homologue of the yeast longevity assurance gene LAG1 is highly expressed in liver and kidney as compared to the expression of the human LAG1 homologue LAG1Hs-1. LASS2 is located on chromosome 1q11. The LASS2 protein interacts with several membrane-associated receptors or transporters. LASS2 protein inhibits the colony formation of human hepatoma cells in vitro, which suggests that this gene may be involved in the regulation of cell growth.

### ORDERING INFORMATION

**CATALOG NUMBER**  
X2309P

**SIZE**  
100 µg  
**FORM**  
Unconjugated

**HOST/CLONE**  
Rabbit

**FORMULATION**  
Provided as solution in phosphate buffered saline with 0.08% sodium azide

**CONCENTRATION**  
See vial for concentration

**ISOTYPE**

**APPLICATIONS**  
Western blot

**SPECIES REACTIVITY**  
Human, Rat, Mouse

#### ACCESSION NUMBER

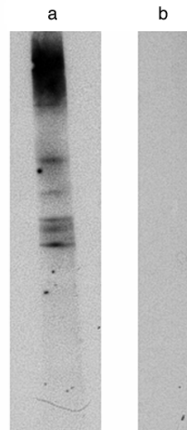
Human	Q96G23
Mouse	Q924Z4
Rat	Q3T1K1

### IMMUNOGEN

Synthetic peptide derived from human Lass2 protein

Western blot analysis using LAG1 longevity assurance homolog 2 (Cat. # X2307P) at 10ug/ml on human placenta lysate (Cat. # X1635C) 14 ug/lane. Lane A] antibody alone, Lane B] conjugate alone. Visualized using Pierce West Femto substrate system. Anti Rabbit secondary used at 1:10K dilution (Cat. # X1207M). Exposure for 5 minutes

49 kDa-->  
38 kDa-->



**POSITIVE CONTROL/TISSUE EXPRESSION**

liver and kidney

**COMMENTS**

Antibody can be used for Western blotting (1-5 µg/ml starting dilution). Optimal concentration should be evaluated by serial dilutions.

**PURIFICATION**

Ammonium Sulfate Precipitation

**SHIP CONDITIONS**

Ship at ambient temperature, freeze upon arrival

**STORAGE CUSTOMER**

Product should be stored at -20°C. Aliquot to avoid freeze/thaw cycles

**STABILITY**

Products are stable for one year from purchase when stored properly

**REFERENCES**

- 1: Becker I, Wang-Eckhardt L, Yaghootfam A, Gieselmann V, Eckhardt M. Differential expression of (dihydro)ceramide synthases in mouse brain: oligodendrocyte-specific expression of CerS2/Lass2. *Histochem Cell Biol.* 2008 Feb;129(2):233-41. Epub 2007 Sep 28.
- 2: Wang X, Carré W, Saxton AM, Cogburn LA. Manipulation of thyroid status and/or GH injection alters hepatic gene expression in the juvenile chicken. *Cytogenet Genome Res.* 2007;117(1-4):174-88.
- 3: Senkal CE, Ponnusamy S, Rossi MJ, Bialewski J, Sinha D, Jiang JC, Jazwinski SM, Hannun YA, Ogretmen B. Role of human longevity assurance gene 1 and C18-ceramide in chemotherapy-induced cell death in human head and neck squamous cell carcinomas. *Mol Cancer Ther.* 2007 Feb;6(2):712-22.
- 4: Yu Y, Lu H, Pan H, Ma JH, Ding ZJ, Li YY. Expression of LASS2 controlled by LAG1 or ADH1 promoters cannot functionally complement Lag1p. *Microbiol Res.* 2006;161(3):203-11. Epub 2005 Sep 22.

**PRODUCT SPECIFIC REFERENCES**