



# SZABO SCANDIC

Part of Europa Biosite

## Produktinformation



Forschungsprodukte & Biochemikalien



Zellkultur & Verbrauchsmaterial



Diagnostik & molekulare Diagnostik



Laborgeräte & Service

Weitere Information auf den folgenden Seiten!  
See the following pages for more information!



### Lieferung & Zahlungsart

siehe unsere [Liefer- und Versandbedingungen](#)

### Zuschläge

- Mindermengenzuschlag
- Trockeneiszuschlag
- Gefahrgutzuschlag
- Expressversand

### SZABO-SCANDIC HandelsgmbH

Quellenstraße 110, A-1100 Wien

T. +43(0)1 489 3961-0

F. +43(0)1 489 3961-7

[mail@szabo-scandic.com](mailto:mail@szabo-scandic.com)

[www.szabo-scandic.com](http://www.szabo-scandic.com)

[linkedin.com/company/szaboscandic](https://www.linkedin.com/company/szaboscandic) 

**Lass1 (Cross reacts with GDF1). Rabbit Antigen Immunoaffinity Purified Polyclonal**  
LAG1 longevity assurance homolog 1, UOG-1 protein, LAG1, LASS1, LAG1 longevity assurance homolog 1 (LASS 1)

**BACKGROUND**

LAG1 is a longevity gene, the first such gene to be identified. Originally cloned from the yeast *Saccharomyces cerevisiae*. A close homolog of this gene, LAC1, has been found in the yeast genome. The human homolog of LAG1 has functions in human aging. LAG1 may be involved in neurodegenerative diseases and human aging. Lass1 may be either a bona fide (dihydro)ceramide synthase or a modulator of its activity. When overexpressed in cells is involved in the production of sphingolipids containing mainly one fatty acid donor (N-linked stearyl- (C18) ceramide) in a fumonisin B1-independent manner. Located in the endoplasmic reticulum membrane; LAss1 is a multi-pass membrane protein.

**ORDERING INFORMATION**

**CATALOG NUMBER**  
X2310P

**SIZE**  
100 µg  
**FORM**  
Affinity Purified

**HOST/CLONE**  
Rabbit

**FORMULATION**  
Provided as solution in phosphate buffered saline with 0.08% sodium azide

**CONCENTRATION**  
Lot specific, see vial

**ISOTYPE**

**APPLICATIONS**  
Western Blot

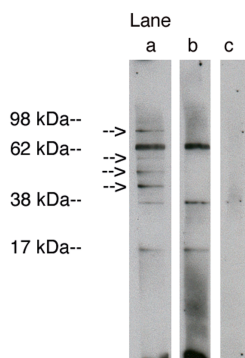
**SPECIES REACTIVITY**  
Human

**ACCESSION NUMBER**  
Human P27544

**IMMUNOGEN**

Synthetic peptide derived from the human Lass1 protein.

Western blot analysis using LAG1 longevity assurance homolog 1 (Cat. # X2310P) at 5 µg/ml on human brain lysate 14 µg/lane (Cat. # X1633C). Lane A] antibody alone, Lane B] antibody with 45µg blocking peptide, Lane C] conjugate alone. Visualized using Pierce West Femto substrate system. Anti Rabbit secondary used at 1:3.5K dilution (Cat. # X1207M). Exposure for 5 min



**POSITIVE CONTROL/TISSUE EXPRESSION**

Hypothalamus

**COMMENTS**

Antibody can be used for Western blotting (1:400 starting dilution). Other uses not yet tested. Only reacts with human Lass1 protein. Also cross reacts with human GDF1. Optimal concentration should be evaluated by serial dilutions.

**PURIFICATION**

Antigen Immunoaffinity Purification

**SHIP CONDITIONS**

Ship on gel ice, store at -20°C immediately upon arrival

**STORAGE CUSTOMER**

Product should be stored at -20°C. Aliquot to avoid freeze/thaw cycles

**STABILITY**

Products are stable for one year from purchase when stored properly

**REFERENCES**

[1] Lee S.-J.; Expression of growth/differentiation factor 1 in the nervous system: conservation of a bicistronic structure.; Proc. Natl. Acad. Sci. U.S.A. 88:4250-4254(1991).

[2] Jiang J.C., Kirchman P.A., Zagulski M., Hunt J., Jazwinski S.M.; Homologs of the yeast longevity gene LAG1 in Caenorhabditis elegans and human.; Genome Res. 8:1259-1272(1998).

[3] Grimwood J., et al.; The DNA sequence and biology of human chromosome 19.; Nature 428:529-535(2004).

[4] The MGC Project Team; The status, quality, and expansion of the NIH full-length cDNA project: the Mammalian Gene Collection (MGC).; Genome Res. 14:2121-2127(2004).

**PRODUCT SPECIFIC REFERENCES**