



SZABO SCANDIC

Part of Europa Biosite

Produktinformation



Forschungsprodukte & Biochemikalien



Zellkultur & Verbrauchsmaterial



Diagnostik & molekulare Diagnostik



Laborgeräte & Service

Weitere Information auf den folgenden Seiten!
See the following pages for more information!



Lieferung & Zahlungsart

siehe unsere [Liefer- und Versandbedingungen](#)

Zuschläge

- Mindermengenzuschlag
- Trockeneiszuschlag
- Gefahrgutzuschlag
- Expressversand

SZABO-SCANDIC HandelsgmbH

Quellenstraße 110, A-1100 Wien

T. +43(0)1 489 3961-0

F. +43(0)1 489 3961-7

mail@szabo-scandic.com

www.szabo-scandic.com

[linkedin.com/company/szaboscandic](https://www.linkedin.com/company/szaboscandic) 

Roundabout homolog 1, ROBO1. Rabbit Antigen Immunoaffinity Purified Polyclonal
H-Robo-1, Deleted in U twenty twenty

BACKGROUND

Receptor for SLIT1 and SLIT2 which are thought to act as molecular guidance cue in cellular migration, including axonal navigation at the ventral midline of the neural tube and projection of axons to different regions during neuronal development. In axon growth cones, the silencing of the attractive effect of NTN1 by SLIT2 may require the formation of a ROBO1-DCC complex. May be required for lung development. Defects in ROBO1 may be a cause of breast and lung cancer. ROBO1 maps within a region of overlapping homozygous deletions characterized in both small cell lung cancer cell lines (SCLC) and in a breast cancer cell line.

ORDERING INFORMATION

CATALOG NUMBER
X2313P

SIZE
10 Miniblots

FORM
Affinity Purified

HOST/CLONE
Rabbit

FORMULATION
Provided as solution in phosphate buffered saline with 0.08% sodium azide

CONCENTRATION
Lot specific, see vial

ISOTYPE

APPLICATIONS
Western Blot

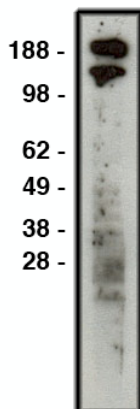
SPECIES REACTIVITY
Human

ACCESSION NUMBER
Human Q9Y6N7

IMMUNOGEN

Synthetic peptide derived from human ROBO1 protein

Western blot using ROBO1 antibody (Cat. No. X2313P) on HT-29 cell lysate. Lysate used at 30 μ g/lane. Antibody used at 1:400 dilution. Secondary antibody, mouse anti-rabbit HRP (Cat. No. X1207M), used at 1:50k dilution.



POSITIVE CONTROL/TISSUE EXPRESSION

Widely expressed, with exception of kidney.

COMMENTS

Antibody can be used for Western blotting (1:400 starting dilution). Optimal concentration should be evaluated by serial dilutions.

PURIFICATION

Antigen Immunoaffinity Purification

SHIP CONDITIONS

Ship on gel ice, store at -20°C immediately upon arrival

STORAGE CUSTOMER

Product should be stored at -20°C. Aliquot to avoid freeze/thaw cycles

STABILITY

Products are stable for one year from purchase when stored properly

REFERENCES

1. Brose K., Bland K.S., Wang K.H., Arnott D., Henzel W., Goodman C.S., Tessier-Lavigne M., Kidd T.; Slit proteins bind Robo receptors and have an evolutionarily conserved role in repulsive axon guidance.; Cell 96:795-806(1999).
2. Dallo I., Forgacs E., Martinez A., Sekido Y., Walker R., Kishida T., Rabbitts P., Maher E.R., Minna J.D., Latif F.; Tumour specific promoter region methylation of the human homologue of the Drosophila Roundabout gene DUTT1 (ROBO1) in human cancers.; Oncogene 21:3020-3028(2002).

PRODUCT SPECIFIC REFERENCES