



# SZABO SCANDIC

Part of Europa Biosite

## Produktinformation



Forschungsprodukte & Biochemikalien



Zellkultur & Verbrauchsmaterial



Diagnostik & molekulare Diagnostik



Laborgeräte & Service

Weitere Information auf den folgenden Seiten!  
See the following pages for more information!



### Lieferung & Zahlungsart

siehe unsere [Liefer- und Versandbedingungen](#)

### Zuschläge

- Mindermengenzuschlag
- Trockeneiszuschlag
- Gefahrgutzuschlag
- Expressversand

### SZABO-SCANDIC HandelsgmbH

Quellenstraße 110, A-1100 Wien

T. +43(0)1 489 3961-0

F. +43(0)1 489 3961-7

[mail@szabo-scandic.com](mailto:mail@szabo-scandic.com)

[www.szabo-scandic.com](http://www.szabo-scandic.com)

[linkedin.com/company/szaboscandic](https://www.linkedin.com/company/szaboscandic) 

**FBXW7. Rabbit Antigen Immunoaffinity Purified Polyclonal**  
F-box and WD-40 domain protein 7, FBXW7, CDC4

**BACKGROUND**

Substrate recognition component of a SCF (SKP1-CUL1-F-box protein) E3 ubiquitin-protein ligase complex which mediates the ubiquitination and subsequent proteasomal degradation of target proteins. Probably recognizes and binds to phosphorylated target proteins. Involved in the degradation of cyclin E, NOTCH1 released notch intracellular domain (NICD), and probably PSEN1.

**ORDERING INFORMATION**

**CATALOG NUMBER**  
X2314P

**SIZE**  
10 Miniblots

**FORM**  
Affinity Purified

**HOST/CLONE**  
Rabbit

**FORMULATION**  
Provided as solution in phosphate buffered saline with 0.08% sodium azide

**CONCENTRATION**  
Lot specific, see vial

**ISOTYPE**

**APPLICATIONS**  
Western Blot

**SPECIES REACTIVITY**  
Human

**ACCESSION NUMBER**  
Human Q969H0

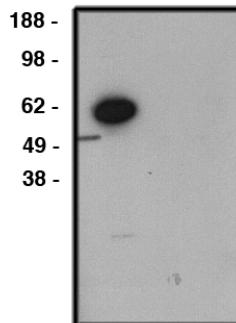
**IMMUNOGEN**

Synthetic peptide derived from the human FBXW7 protein

Western blot analysis using FBXW7 antibody (cat. no. X2314P) on human brain lysate (cat. no. X1633C). Antibody used at 1  $\mu$ g/ml dilution and is used alone (1) or incubated with blocking peptide (cat. no. X2337B) (2). Visualized using mouse anti-rabbit HRP (cat. no. X1209M) at 1:200K dilution.

**FBXW7 Antibody** (Cat. No. X2314P) + +

**Blocking Peptide** - +



**POSITIVE CONTROL/TISSUE EXPRESSION**

Widely expressed in most human tissues.

**COMMENTS**

Antibody can be used for Western blotting (1:400 starting dilution). Optimal concentration should be evaluated by serial dilutions.

**PURIFICATION**

Antigen Immunoaffinity Purification

**SHIP CONDITIONS**

Ship on gel ice, store at -20°C immediately upon arrival

**STORAGE CUSTOMER**

Product should be stored at -20°C. Aliquot to avoid freeze/thaw cycles

**STABILITY**

Products are stable for one year from purchase when stored properly

**REFERENCES**

1. Strohmaier, H., et al. 'Human F-box protein hCdc4 targets cyclin E for proteolysis and is mutated in a breast cancer cell line.; Nature 413:316-322(2001).
2. Moberg, K.H., et al. 'Archipelago regulates cyclin E levels in Drosophila and is mutated in human cancer cell lines.; Nature 413:311-316(2001).

**PRODUCT SPECIFIC REFERENCES**