



SZABO SCANDIC

Part of Europa Biosite

Produktinformation



Forschungsprodukte & Biochemikalien



Zellkultur & Verbrauchsmaterial



Diagnostik & molekulare Diagnostik



Laborgeräte & Service

Weitere Information auf den folgenden Seiten!
See the following pages for more information!



Lieferung & Zahlungsart

siehe unsere [Liefer- und Versandbedingungen](#)

Zuschläge

- Mindermengenzuschlag
- Trockeneiszuschlag
- Gefahrgutzuschlag
- Expressversand

SZABO-SCANDIC HandelsgmbH

Quellenstraße 110, A-1100 Wien

T. +43(0)1 489 3961-0

F. +43(0)1 489 3961-7

mail@szabo-scandic.com

www.szabo-scandic.com

[linkedin.com/company/szaboscandic](https://www.linkedin.com/company/szaboscandic) 

Sodium/hydrogen exchanger 1. Rabbit Antigen Immunoaffinity Purified Polyclonal

Sodium/hydrogen exchanger 1; NHE-1; SL9A1; Solute carrier family 9 member 1

BACKGROUND

NHE-1 is involved in pH regulation to eliminate acids generated by active metabolism or to counter adverse environmental conditions. Major proton extruding system driven by the inward sodium ion chemical gradient. NHE-1 plays an important role in signal transduction. Located in the kidney and intestine.

ORDERING INFORMATION

CATALOG NUMBER

X2315P

SIZE

10 Miniblots

FORM

Affinity Purified

HOST/CLONE

Rabbit

FORMULATION

Provided as solution in phosphate buffered saline with 0.08% sodium azide

CONCENTRATION

Lot specific, see vial

ISOTYPE**APPLICATIONS**

Western Blot

SPECIES REACTIVITY

Human

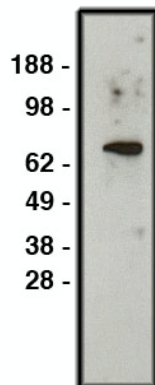
ACCESSION NUMBER

Human P19634

IMMUNOGEN

Synthetic peptide derived from the human NHE-1 protein

Western blot using NHE1 antibody (Cat. No. X2315P) on HT-29 cell lysate. Lysate used at 30 μ g/ml. Antibody used at 1:400 dilution. Secondary antibody, mouse anti-rabbit HRP (Cat. No. X1207M), used at 1:50k dilution.



POSITIVE CONTROL/TISSUE EXPRESSION

Protein expressed in kidney and intestine.

COMMENTS

Antibody can be used for Western blotting (1:400 starting dilution). Optimal concentration should be evaluated by serial dilutions.

PURIFICATION

Antigen Immunoaffinity Purification

SHIP CONDITIONS

Ship on gel ice, store at -20°C immediately upon arrival

STORAGE CUSTOMER

Product should be stored at -20°C. Aliquot to avoid freeze/thaw cycles

STABILITY

Products are stable for one year from purchase when stored properly

REFERENCES

1. Pang, T., et al. 'Expression of calcineurin B homologous protein 2 protects serum deprivation-induced cell death by serum-independent activation of Na⁺/H⁺ exchanger.; J. Biol. Chem. 277:43771-43777(2002).
2. Slepko, E.R., et al. 'Proline residues in transmembrane segment IV are critical for activity, expression and targeting of the Na⁺/H⁺ exchanger isoform 1.; Biochem. J. 379:31-38(2004).
3. Slepko, E.R., et al. 'Structural and functional characterization of transmembrane segment IV of the NHE1 isoform of the Na⁺/H⁺ exchanger.; J. Biol. Chem. 280:17863-17872(2005).

PRODUCT SPECIFIC REFERENCES