



SZABO SCANDIC

Part of Europa Biosite

Produktinformation



Forschungsprodukte & Biochemikalien



Zellkultur & Verbrauchsmaterial



Diagnostik & molekulare Diagnostik



Laborgeräte & Service

Weitere Information auf den folgenden Seiten!
See the following pages for more information!



Lieferung & Zahlungsart

siehe unsere [Liefer- und Versandbedingungen](#)

Zuschläge

- Mindermengenzuschlag
- Trockeneiszuschlag
- Gefahrgutzuschlag
- Expressversand

SZABO-SCANDIC HandelsgmbH

Quellenstraße 110, A-1100 Wien

T. +43(0)1 489 3961-0

F. +43(0)1 489 3961-7

mail@szabo-scandic.com

www.szabo-scandic.com

[linkedin.com/company/szaboscandic](https://www.linkedin.com/company/szaboscandic) 



SMO (Smoothened Homolog). Rabbit Antigen Immunoaffinity Purified Polyclonal
Smoothened homolog [Precursor], SMO, Gx protein, SMO, SMOH

BACKGROUND

SMO is a G protein-coupled receptor (GPCR) that putatively associates with the patched protein (PTCH) to transduce the hedgehog's proteins signal. The binding of sonic hedgehog (SHH) to its receptor patched is thought to prevent normal inhibition by patched of smoothened (SMO). In basal cell carcinoma there are two somatic mutations SMO, D473-> H473 and R562 ->Q562.

ORDERING INFORMATION

CATALOG NUMBER
X2333P

SIZE
10 Miniblots

FORM
Affinity Purified

HOST/CLONE
Rabbit

FORMULATION
Provided as solution in phosphate buffered saline with 0.08% sodium azide

CONCENTRATION
Lot specific Concentration

ISOTYPE
IgG

APPLICATIONS
Western blot

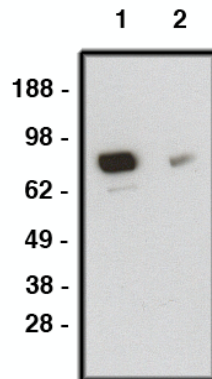
SPECIES REACTIVITY
Human

ACCESSION NUMBER
Human Q99835

IMMUNOGEN

Synthetic peptide derived from the human SMO protein

Western blot using SMO antibody (Cat. No. X2376P) on human brain lysate (Cat. No. X1633C). Lysate loaded at 15µg/lane. Antibody used at 10 µg/ml (1) and 5 µg/ml (2) dilution. Secondary antibody, mouse anti-rabbit-HRP (Cat. No. X1207M), used at 1:150K dilution.



POSITIVE CONTROL/TISSUE EXPRESSION

Brain

COMMENTS

Antibody can be used for Western blotting (1:400 starting dilution). Optimal concentration should be evaluated by serial dilutions.

PURIFICATION

Antigen Immunoaffinity Purification

SHIP CONDITIONS

Ship on gel ice, store at -20°C immediately upon arrival

STORAGE CUSTOMER

Product should be stored at -20°C. Aliquot to avoid freeze/thaw cycles

STABILITY

Products are stable for one year from purchase when stored properly

REFERENCES

1. Stone, D.M., et al. The tumour-suppressor gene patched encodes a candidate receptor for Sonic hedgehog.; Nature 384:129-134(1996).
2. Xie, J., et al. Activating Smoothed mutations in sporadic basal-cell carcinoma.; Nature 391:90-92(1998).
3. Liu, Y., et al. 'Fused-Costal2 protein complex regulates Hedgehog-induced Smo phosphorylation and cell-surface accumulation.' Genes Dev. 2007 Aug 1;21(15):1949-63.
4. Moraea, R.C., et al. 'Constitutive activation of smoothed (SMO) in mammary glands of transgenic mice leads to increased proliferation, altered differentiation and ductal dysplasia.' Development. 2007 Mar;134(6):1231-42.
5. Ruiz-Gomez, A., et al. 'The cell biology of Smo signalling and its relationships with GPCRs.' Biochim Biophys Acta. 2007 Apr;1768(4):901-12.

PRODUCT SPECIFIC REFERENCES