



# SZABO SCANDIC

Part of Europa Biosite

## Produktinformation



Forschungsprodukte & Biochemikalien



Zellkultur & Verbrauchsmaterial



Diagnostik & molekulare Diagnostik



Laborgeräte & Service

Weitere Information auf den folgenden Seiten!  
See the following pages for more information!



### Lieferung & Zahlungsart

siehe unsere [Liefer- und Versandbedingungen](#)

### Zuschläge

- Mindermengenzuschlag
- Trockeneiszuschlag
- Gefahrgutzuschlag
- Expressversand

### SZABO-SCANDIC HandelsgmbH

Quellenstraße 110, A-1100 Wien

T. +43(0)1 489 3961-0

F. +43(0)1 489 3961-7

[mail@szabo-scandic.com](mailto:mail@szabo-scandic.com)

[www.szabo-scandic.com](http://www.szabo-scandic.com)

[linkedin.com/company/szaboscandic](https://www.linkedin.com/company/szaboscandic) 



**Roundabout homolog 1, ROBO1. Rabbit Polyclonal Antibody**  
H-Robo-1, Deleted in U twenty twenty

**BACKGROUND**

Receptor for SLIT1 and SLIT2 which are thought to act as molecular guidance cue in cellular migration, including axonal navigation at the ventral midline of the neural tube and projection of axons to different regions during neuronal development. In axon growth cones, the silencing of the attractive effect of NTN1 by SLIT2 may require the formation of a ROBO1-DCC complex. May be required for lung development. Defects in ROBO1 may be a cause of breast and lung cancer. ROBO1 maps within a region of overlapping homozygous deletions characterized in both small cell lung cancer cell lines (SCLC) and in a breast cancer cell line.

**ORDERING INFORMATION**

**CATALOG NUMBER**  
X2334P

**SIZE**  
100  $\mu$ g

**FORM**  
Unconjugated

**HOST/CLONE**  
Rabbit

**FORMULATION**  
Provided as solution in phosphate buffered saline with 0.08% sodium azide

**CONCENTRATION**  
See vial for concentration

**ISOTYPE**

**APPLICATIONS**  
Western Blot

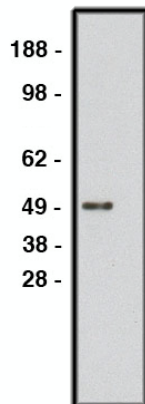
**SPECIES REACTIVITY**  
Human

**ACCESSION NUMBER**  
Human Q9Y6N7

**IMMUNOGEN**

Synthetic peptide derived from human ROBO1 protein

Western blot using ROBO1 antibody (Cat. No. X2334P) on human brain lysate (Cat. No. X1633C). Lysate used at 15  $\mu$ g/lane. Antibody used at 10  $\mu$ g/ml. Secondary antibody, mouse anti-rabbit HRP (Cat. No. X1207M), used at 1:50k.



**POSITIVE CONTROL/TISSUE EXPRESSION**

Widely expressed, with exception of kidney.

**COMMENTS**

Antibody can be used for Western blotting (1-5 mg/ml). Optimal concentration should be evaluated by serial dilutions.

**PURIFICATION**

Ammonium Sulfate Precipitation

**SHIP CONDITIONS**

Ship at ambient temperature, freeze upon arrival

**STORAGE CUSTOMER**

Product should be stored at -20°C. Aliquot to avoid freeze/thaw cycles

**STABILITY**

Products are stable for one year from purchase when stored properly

**REFERENCES**

1. Brose K., Bland K.S., Wang K.H., Arnott D., Henzel W., Goodman C.S., Tessier-Lavigne M., Kidd T.; Slit proteins bind Robo receptors and have an evolutionarily conserved role in repulsive axon guidance.; Cell 96:795-806(1999).
2. Dallo A., Forgacs E., Martinez A., Sekido Y., Walker R., Kishida T., Rabbitts P., Maher E.R., Minna J.D., Latif F.; Tumour specific promoter region methylation of the human homologue of the Drosophila Roundabout gene DUTT1 (ROBO1) in human cancers.; Oncogene 21:3020-3028(2002).

**PRODUCT SPECIFIC REFERENCES**