



# SZABO SCANDIC

Part of Europa Biosite

## Produktinformation



Forschungsprodukte & Biochemikalien



Zellkultur & Verbrauchsmaterial



Diagnostik & molekulare Diagnostik



Laborgeräte & Service

Weitere Information auf den folgenden Seiten!  
See the following pages for more information!



### Lieferung & Zahlungsart

siehe unsere [Liefer- und Versandbedingungen](#)

### Zuschläge

- Mindermengenzuschlag
- Trockeneiszuschlag
- Gefahrgutzuschlag
- Expressversand

### SZABO-SCANDIC HandelsgmbH

Quellenstraße 110, A-1100 Wien

T. +43(0)1 489 3961-0

F. +43(0)1 489 3961-7

[mail@szabo-scandic.com](mailto:mail@szabo-scandic.com)

[www.szabo-scandic.com](http://www.szabo-scandic.com)

[linkedin.com/company/szaboscandic](https://www.linkedin.com/company/szaboscandic) 



## Sodium/hydrogen exchanger 1. Rabbit Polyclonal Antibody

Sodium/hydrogen exchanger 1; NHE-1; SL9A1; Solute carrier family 9 member 1

### BACKGROUND

NHE-1 is involved in pH regulation to eliminate acids generated by active metabolism or to counter adverse environmental conditions. Major proton extruding system driven by the inward sodium ion chemical gradient. NHE-1 plays an important role in signal transduction. Located in the kidney and intestine.

### ORDERING INFORMATION

**CATALOG NUMBER**  
X2338P

**SIZE**  
100  $\mu$ g  
**FORM**  
Unconjugated

**HOST/CLONE**  
Rabbit

**FORMULATION**  
Provided as solution in phosphate buffered saline with 0.08% sodium azide

**CONCENTRATION**  
See vial for concentration

**ISOTYPE**

**APPLICATIONS**  
Western Blot

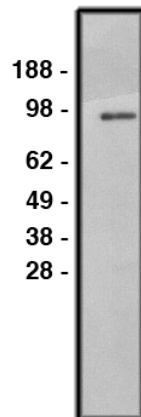
**SPECIES REACTIVITY**  
Human

**ACCESSION NUMBER**  
Human P19634

### IMMUNOGEN

Synthetic peptide derived from the human NHE-1 protein

Western blot using NHE1 antibody (Cat. No. X2338P) on HT-29 cell lysate (Cat. No. X1633C). Lysate loaded at 30  $\mu$ g/lane. Antibody used at 10  $\mu$ g/ml. Secondary antibody, mouse anti-rabbit HRP (Cat. No. X1207M), used at 1:150k dilution.



**POSITIVE CONTROL/TISSUE EXPRESSION**

Protein expressed in kidney and intestine.

**COMMENTS**

Antibody can be used for Western blotting (1-5  $\mu$ g/ml). Optimal concentration should be evaluated by serial dilutions.

**PURIFICATION**

Ammonium Sulfate Precipitation

**SHIP CONDITIONS**

Ship at ambient temperature, freeze upon arrival

**STORAGE CUSTOMER**

Product should be stored at -20°C. Aliquot to avoid freeze/thaw cycles

**STABILITY**

Products are stable for one year from purchase when stored properly

**REFERENCES**

1. Pang, T., et al. 'Expression of calcineurin B homologous protein 2 protects serum deprivation-induced cell death by serum-independent activation of Na<sup>+</sup>/H<sup>+</sup> exchanger.; J. Biol. Chem. 277:43771-43777(2002).
2. Slepko, E.R., et al. 'Proline residues in transmembrane segment IV are critical for activity, expression and targeting of the Na<sup>+</sup>/H<sup>+</sup> exchanger isoform 1.; Biochem. J. 379:31-38(2004).
3. Slepko, E.R., et al. 'Structural and functional characterization of transmembrane segment IV of the NHE1 isoform of the Na<sup>+</sup>/H<sup>+</sup> exchanger.; J. Biol. Chem. 280:17863-17872(2005).

**PRODUCT SPECIFIC REFERENCES**