



SZABO SCANDIC

Part of Europa Biosite

Produktinformation



Forschungsprodukte & Biochemikalien



Zellkultur & Verbrauchsmaterial



Diagnostik & molekulare Diagnostik



Laborgeräte & Service

Weitere Information auf den folgenden Seiten!
See the following pages for more information!



Lieferung & Zahlungsart

siehe unsere [Liefer- und Versandbedingungen](#)

Zuschläge

- Mindermengenzuschlag
- Trockeneiszuschlag
- Gefahrgutzuschlag
- Expressversand

SZABO-SCANDIC HandelsgmbH

Quellenstraße 110, A-1100 Wien

T. +43(0)1 489 3961-0

F. +43(0)1 489 3961-7

mail@szabo-scandic.com

www.szabo-scandic.com

[linkedin.com/company/szaboscandic](https://www.linkedin.com/company/szaboscandic) 



NHE6 / Sodium/hydrogen exchanger 6. Rabbit Antigen Immunoaffinity Purified Polyclonal
Sodium/hydrogen exchanger 6; NHE6; Solute carrier family 9 member 6; SL9A6

BACKGROUND

Electroneutral exchange of protons for Na(+) and K(+) across the mitochondrial inner membrane. Contributes to organellar volume and calcium homeostasis.

ORDERING INFORMATION

CATALOG NUMBER
X2342P

SIZE
10 Miniblots

FORM
Affinity Purified

HOST/CLONE
Rabbit

FORMULATION
Provided as solution in phosphate buffered saline with 0.08% sodium azide

CONCENTRATION
Lot specific, see vial

ISOTYPE

APPLICATIONS
Western blot

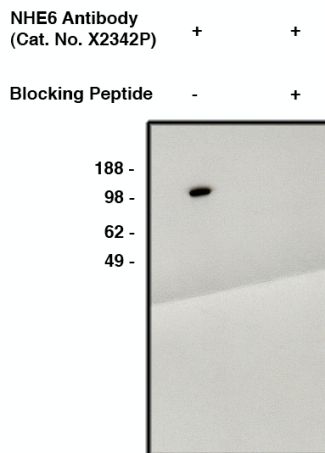
SPECIES REACTIVITY
Human

ACCESSION NUMBER
Human Q92581

IMMUNOGEN

Synthetic peptide derived from human NHE6 protein

Western blot using NHE6 antibody (Cat. No. X2342P) on human brain lysate (Cat. No. X1633C). Antibody function blocked using specific blocking peptide (Cat. No. X2344B) (right lane only). Second step mouse anti-rabbit HRP (Cat. No. X1209M) used at 1:75K dilution.



POSITIVE CONTROL/TISSUE EXPRESSION

Ubiquitous; most abundant in mitochondrion-rich tissues such as brain, skeletal muscle and heart.

COMMENTS

Antibody can be used for Western blotting (1:400 starting dilution). Optimal concentration should be evaluated by serial dilutions.

PURIFICATION

Antigen Immunoaffinity Purification

SHIP CONDITIONS

Ship on gel ice, store at -20°C immediately upon arrival

STORAGE CUSTOMER

Product should be stored at -20°C. Aliquot to avoid freeze/thaw cycles

STABILITY

Products are stable for one year from purchase when stored properly

REFERENCES

1. Numata, M., et al. 'Identification of a mitochondrial Na⁺/H⁺ exchanger.; J. Biol. Chem. 273:6951-6959(1998)..

PRODUCT SPECIFIC REFERENCES