



SZABO SCANDIC

Part of Europa Biosite

Produktinformation



Forschungsprodukte & Biochemikalien



Zellkultur & Verbrauchsmaterial



Diagnostik & molekulare Diagnostik



Laborgeräte & Service

Weitere Information auf den folgenden Seiten!
See the following pages for more information!



Lieferung & Zahlungsart

siehe unsere [Liefer- und Versandbedingungen](#)

Zuschläge

- Mindermengenzuschlag
- Trockeneiszuschlag
- Gefahrgutzuschlag
- Expressversand

SZABO-SCANDIC HandelsgmbH

Quellenstraße 110, A-1100 Wien

T. +43(0)1 489 3961-0

F. +43(0)1 489 3961-7

mail@szabo-scandic.com

www.szabo-scandic.com

[linkedin.com/company/szaboscandic](https://www.linkedin.com/company/szaboscandic) 

Sphingomyelin Phosphodiesterase 3. Rabbit Antigen Immunoaffinity Purified Polyclonal
nSMase2; Neutral sphingomyelinase 2; EC 3.1.4.12

BACKGROUND

Sphingomyelin phosphodiesterase 3 catalyzes the hydrolysis of sphingomyelin to form ceramide and phosphocholine. Ceramide mediates numerous cellular functions, such as apoptosis and growth arrest, and is capable of regulating these two cellular events independently. It also hydrolyzes sphingosylphosphocholine. Sphingomyelin phosphodiesterase 3 regulates the cell cycle by acting as a growth suppressor in confluent cells. It likely acts as a regulator of postnatal development and participates in bone and dentin mineralization. It is activated by unsaturated fatty acids and phosphatidylserine. It is predominantly expressed in the brain.

ORDERING INFORMATION

CATALOG NUMBER
X2359P

SIZE
10 Miniblots

FORM
Affinity Purified

HOST/CLONE
Rabbit

FORMULATION
Provided as solution in phosphate buffered saline with 0.08% sodium azide

CONCENTRATION
Lot specific, see vial

ISOTYPE

APPLICATIONS
Western blot

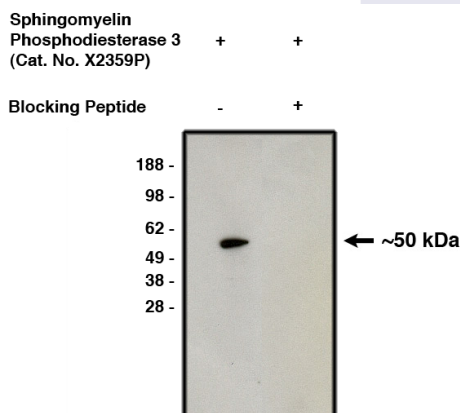
SPECIES REACTIVITY
Human

ACCESSION NUMBER
Human Q9NY59

IMMUNOGEN

Synthetic peptide derived from human sphingomyelin phosphodiesterase 3

Western blot using affinity purified nSMase2 antibody (Cat. No. X2359P) on human brain lysate (Cat. No. X1633C). Antibody without (lane 1) or with (lane 2) blocking peptide. Visualized using mouse anti-rabbit HRP conjugated (Cat. No. X1207M) at 1:200K dilution).



POSITIVE CONTROL/TISSUE EXPRESSION

Predominantly expressed in the brain.

COMMENTS

Antibody can be used for Western blotting (1:400 starting dilution). Optimal concentration should be evaluated by serial dilutions. Protein appears to run lower than expected protein molecular weight. However, antibody is specific for the protein and band blocks when blocking peptide used.

PURIFICATION

Antigen Immunoaffinity Purification

SHIP CONDITIONS

Ship on gel ice, store at -20°C immediately upon arrival

STORAGE CUSTOMER

Product should be stored at -20°C. Aliquot to avoid freeze/thaw cycles

STABILITY

Products are stable for one year from purchase when stored properly

REFERENCES

1. Hofmann, K., et al. Cloning and characterization of the mammalian brain-specific, Mg²⁺-dependent neutral sphingomyelinase.; Proc. Natl. Acad. Sci. U.S.A. 97:5895-5900(2000).
2. Miura, Y., et al. Hydrolysis of sphingosylphosphocholine by neutral sphingomyelinases.; FEBS Lett. 557:288-292 (2004).
3. Marchesini, N., et al. Role for mammalian neutral sphingomyelinase 2 in confluence-induced growth arrest of MCF7 cells.; J. Biol. Chem. 279:25101-25111(2004).

PRODUCT SPECIFIC REFERENCES