



# SZABO SCANDIC

Part of Europa Biosite

## Produktinformation



Forschungsprodukte & Biochemikalien



Zellkultur & Verbrauchsmaterial



Diagnostik & molekulare Diagnostik



Laborgeräte & Service

Weitere Information auf den folgenden Seiten!  
See the following pages for more information!



### Lieferung & Zahlungsart

siehe unsere [Liefer- und Versandbedingungen](#)

### Zuschläge

- Mindermengenzuschlag
- Trockeneiszuschlag
- Gefahrgutzuschlag
- Expressversand

### SZABO-SCANDIC HandelsgmbH

Quellenstraße 110, A-1100 Wien

T. +43(0)1 489 3961-0

F. +43(0)1 489 3961-7

[mail@szabo-scandic.com](mailto:mail@szabo-scandic.com)

[www.szabo-scandic.com](http://www.szabo-scandic.com)

[linkedin.com/company/szaboscandic](https://www.linkedin.com/company/szaboscandic) 

## Monocarboxylate Transporter 3 (MCT3). Rabbit Polyclonal Antibody

Solute carrier family 16 member 8; MCT3; SLC16A8

### BACKGROUND

Monocarboxylate Transporter 3 (MCT3) is a proton-linked monocarboxylate transporter. It catalyzes the rapid transport across the plasma membrane of many monocarboxylates such as lactate, pyruvate, branched-chain oxo acids derived from leucine, valine and isoleucine, and the ketone bodies acetoacetate, beta-hydroxybutyrate and acetate.

### ORDERING INFORMATION

**CATALOG NUMBER**

X2362P

**SIZE**

100  $\mu$ g

**FORM**

Unconjugated

**HOST/CLONE**

Rabbit

**FORMULATION**

Provided as solution in phosphate buffered saline with 0.08% sodium azide

**CONCENTRATION**

See vial for concentration

**ISOTYPE**

**APPLICATIONS**

Western blot

**SPECIES REACTIVITY**

Human

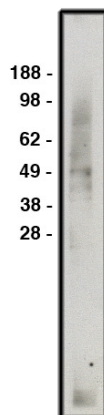
**ACCESSION NUMBER**

Human O95907

### IMMUNOGEN

Synthetic peptide derived from MCT3 protein.

Western blot analysis using MCT3 antibody (Cat. No. X2363P) on human brain lysate (Cat. No. X1633C). Lysate loaded at 15  $\mu$ g/lane. Antibody used at 5  $\mu$ g/ml. Secondary antibody, mouse anti-rabbit HRP (Cat. No. X1209M) used at 1:50k dilution.



**POSITIVE CONTROL/TISSUE EXPRESSION**

Retinal pigment epithelium

**COMMENTS**

Antibody can be used for Western blotting (1-5 µg/ml starting dilution). Optimal concentration should be evaluated by serial dilutions.

**PURIFICATION**

Ammonium Sulfate Precipitation

**SHIP CONDITIONS**

Ship at ambient temperature, freeze upon arrival

**STORAGE CUSTOMER**

Product should be stored at -20°C. Aliquot to avoid freeze/thaw cycles

**STABILITY**

Products are stable for one year from purchase when stored properly

**REFERENCES**

1. Yoon, H., et al. Cloning of the human monocarboxylate transporter MCT3 gene: localization to chromosome 22q12.3-q13.2.; Genomics 60:366-370(1999).
2. Zhu, S., et al. 'Inactivation of monocarboxylate transporter MCT3 by DNA methylation in atherosclerosis.' Circulation. 2005 Aug 30;112(9):1353-61.
3. Philip, N.J., et al. 'Loss of MCT1, MCT3, and MCT4 expression in the retinal pigment epithelium and neural retina of the 5A11/basigin-null mouse.' Invest Ophthalmol Vis Sci. 2003 Mar;44(3):1305-11.

**PRODUCT SPECIFIC REFERENCES**