



SZABO SCANDIC

Part of Europa Biosite

Produktinformation



Forschungsprodukte & Biochemikalien



Zellkultur & Verbrauchsmaterial



Diagnostik & molekulare Diagnostik



Laborgeräte & Service

Weitere Information auf den folgenden Seiten!
See the following pages for more information!



Lieferung & Zahlungsart

siehe unsere [Liefer- und Versandbedingungen](#)

Zuschläge

- Mindermengenzuschlag
- Trockeneiszuschlag
- Gefahrgutzuschlag
- Expressversand

SZABO-SCANDIC HandelsgmbH

Quellenstraße 110, A-1100 Wien

T. +43(0)1 489 3961-0

F. +43(0)1 489 3961-7

mail@szabo-scandic.com

www.szabo-scandic.com

[linkedin.com/company/szaboscandic](https://www.linkedin.com/company/szaboscandic) 

Zinc Finger Protein GLI1. Rabbit Antigen Immunoaffinity Purified Polyclonal
Glioma-associated oncogene; Oncogene GLI

BACKGROUND

Zinc Finger Protein GLI1 is a member of the Kruppel family of zinc finger proteins. It is thought that it may regulate the transcription of specific genes during normal development and may play a role in craniofacial development and digital development. It also may be involved in the development of the central nervous system and gastrointestinal tract. This protein mediates SHH signaling and thus cell proliferation and differentiation. It has been localized to the cytoplasm and nucleus. It is tethered in the cytoplasm by binding to SUFU and activation and translocation to the nucleus is promoted by interaction with STK36. Protein expression is amplified in glioblastoma cells. Defects in the GLI1 protein may be a cause of breast cancer.

ORDERING INFORMATION

CATALOG NUMBER
X2363P

SIZE
10 Miniblots

FORM
Affinity Purified

HOST/CLONE
Rabbit

FORMULATION
Provided as solution in phosphate buffered saline with 0.08% sodium azide

CONCENTRATION
Lot specific, see vial

ISOTYPE

APPLICATIONS
Western blot

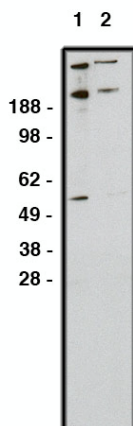
SPECIES REACTIVITY
Human

ACCESSION NUMBER
Human P08151

IMMUNOGEN

Synthetic peptide derived from human zinc finger protein GLI1.

Western blot using GLI1 antibody (Cat. No. X2363P) on RMS-13 cell lysate. Lysate used at 15 μ g/lane. Antibody used at 1:200 (lane 1) and 1:400 (lane 2) dilution. Secondary antibody, mouse anti-rabbit HRP (Cat. No. X1207M), used at 1:75k dilution.



POSITIVE CONTROL/TISSUE EXPRESSION

Protein found in testis, myometrium and fallopian tube.

COMMENTS

Antibody can be used for Western blotting (1:400 starting dilution). Optimal concentration should be evaluated by serial dilutions.

PURIFICATION

Antigen Immunoaffinity Purification

SHIP CONDITIONS

Ship on gel ice, store at -20°C immediately upon arrival

STORAGE CUSTOMER

Product should be stored at -20°C. Aliquot to avoid freeze/thaw cycles

STABILITY

Products are stable for one year from purchase when stored properly

REFERENCES

1. Kinzler, K.W., et al. 'The GLI gene is a member of the Kruppel family of zinc finger proteins.; Nature 332:371-374 (1988).
2. Wang, Z.Q., et al. 'Identification of polymorphic variants of the GLI1 oncogene.; J. Invest. Dermatol. 115:328-329 (2000).

PRODUCT SPECIFIC REFERENCES