



SZABO SCANDIC

Part of Europa Biosite

Produktinformation



Forschungsprodukte & Biochemikalien



Zellkultur & Verbrauchsmaterial



Diagnostik & molekulare Diagnostik



Laborgeräte & Service

Weitere Information auf den folgenden Seiten!
See the following pages for more information!



Lieferung & Zahlungsart

siehe unsere [Liefer- und Versandbedingungen](#)

Zuschläge

- Mindermengenzuschlag
- Trockeneiszuschlag
- Gefahrgutzuschlag
- Expressversand

SZABO-SCANDIC HandelsgmbH

Quellenstraße 110, A-1100 Wien

T. +43(0)1 489 3961-0

F. +43(0)1 489 3961-7

mail@szabo-scandic.com

www.szabo-scandic.com

[linkedin.com/company/szaboscandic](https://www.linkedin.com/company/szaboscandic) 

G-Protein Coupled Receptor 94. Rabbit Antigen Immunoaffinity Purified Polyclonal
P2Y Purinoceptor 13; P2Y13; G-protein coupled receptor 86; GPCR94; GPCR86

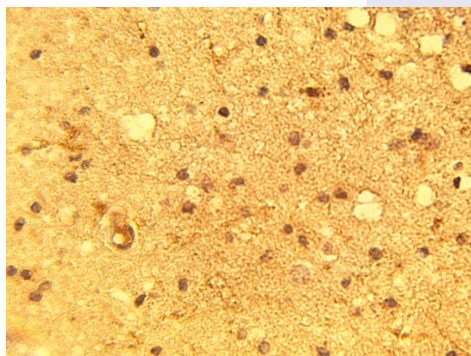
BACKGROUND

Receptor for ADP. Coupled to G(i)-proteins. May play a role in hematopoiesis and the immune system. Strong expression in spleen and adult brain. Lower expression in placenta, lung, liver, spinal cord, thymus, small intestine, uterus, stomach, testis, fetal brain, and adrenal gland. Not detected in pancreas, heart, kidney, skeletal muscle, ovary or fetal aorta. Clearly detected in lymph node and bone marrow, weakly detected in peripheral blood mononuclear cells (PBMC) and in peripheral blood leukocytes (PBL), but not detected in polymorphonuclear cells (PMN). In the brain, detected in all brain regions examined. Stimulation by ADP in stably transfected CHO cells resulted in inhibition of adenylyl cyclase and the phosphorylation of the MAP kinases MAPK3 and MAPK1 in a pertussis toxin-sensitive way. Inhibition of adenylyl cyclase and phosphorylation of the MAP kinases are transduction mechanisms that involve G(i) proteins.

IMMUNOGEN

Synthetic peptide derived from human GPCR94.

Immunohistochemical staining of normal human brain tissue using P2Y13 antibody (Cat. No. X2373P) at 15 µg/ml



ORDERING INFORMATION

CATALOG NUMBER
X2373P

SIZE
10 Miniblots

FORM
Affinity Purified

HOST/CLONE
Rabbit

FORMULATION
Provided as solution in phosphate buffered saline with 0.08% sodium azide

CONCENTRATION
Lot specific, see vial

ISOTYPE

APPLICATIONS
Western blot

SPECIES REACTIVITY
Human

ACCESSION NUMBER
Human Q9BPV8

POSITIVE CONTROL/TISSUE EXPRESSION

Normal human brain

COMMENTS

Antibody can be used for Western blotting (1:400 starting dilution) and immunohistochemistry (10-15 $\mu\text{g/ml}$). Optimal concentration should be evaluated by serial dilutions.

PURIFICATION

Antigen Immunoaffinity Purification

SHIP CONDITIONS

Ship on gel ice, store at -20°C immediately upon arrival

STORAGE CUSTOMER

Product should be stored at -20°C . Aliquot to avoid freeze/thaw cycles

STABILITY

Products are stable for one year from purchase when stored properly

REFERENCES

1. Communi, D, et al. Identification of a novel human ADP receptor coupled to Gi.; J. Biol. Chem. 276:41479-41485 (2001).

PRODUCT SPECIFIC REFERENCES