



# SZABO SCANDIC

Part of Europa Biosite

## Produktinformation



Forschungsprodukte & Biochemikalien



Zellkultur & Verbrauchsmaterial



Diagnostik & molekulare Diagnostik



Laborgeräte & Service

Weitere Information auf den folgenden Seiten!  
See the following pages for more information!



### Lieferung & Zahlungsart

siehe unsere [Liefer- und Versandbedingungen](#)

### Zuschläge

- Mindermengenzuschlag
- Trockeneiszuschlag
- Gefahrgutzuschlag
- Expressversand

### SZABO-SCANDIC HandelsgmbH

Quellenstraße 110, A-1100 Wien

T. +43(0)1 489 3961-0

F. +43(0)1 489 3961-7

[mail@szabo-scandic.com](mailto:mail@szabo-scandic.com)

[www.szabo-scandic.com](http://www.szabo-scandic.com)

[linkedin.com/company/szaboscandic](https://www.linkedin.com/company/szaboscandic) 

**APM2 (CT). Rabbit Antigen Immunoaffinity Purified Polyclonal**  
Adipose most abundant gene transcript 2 protein, apM-2, APM2, C10orf116

**BACKGROUND**

APM2 is an ~8kDa protein which until recently was found only in the EST data base but never as an expressed protein. APM2 has since been shown to be associated with cisplatin resistance in cell lines. APM2 is not found in cisplatin sensitive cell lines. These data implicate APM2 in the development of cisplatin resistance in tumor cells.

**ORDERING INFORMATION**

**CATALOG NUMBER**  
X2385P

**SIZE**  
10 Miniblots

**FORM**  
Affinity Purified

**HOST/CLONE**  
Rabbit

**FORMULATION**  
Provided as solution in phosphate buffered saline with 0.08% sodium azide

**CONCENTRATION**  
Lot specific, see vial

**ISOTYPE**  
IgG

**APPLICATIONS**  
Western Blot

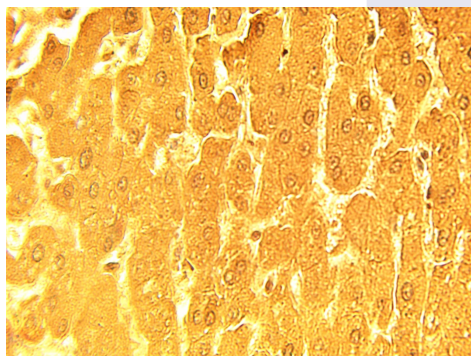
**SPECIES REACTIVITY**  
Human

**ACCESSION NUMBER**  
Human Q15847

**IMMUNOGEN**

Synthetic peptide derived from human APM2 protein

Immunohistochemical staining of normal human liver tissue using APM2 antibody (Cat. No. X2385P) at 15 µg/ml.



**POSITIVE CONTROL/TISSUE EXPRESSION**

Adipose tissue, cornea and liver.

**COMMENTS**

Antibody can be used for Western blotting (1:400 starting dilution) and immunohistochemistry (10-15  $\mu\text{g/ml}$ ). Optimal concentration should be evaluated by serial dilutions.

**PURIFICATION**

Antigen Immunoaffinity Purification

**SHIP CONDITIONS**

Ship on gel ice, store at  $-20^{\circ}\text{C}$  immediately upon arrival

**STORAGE CUSTOMER**

Product should be stored at  $-20^{\circ}\text{C}$ . Aliquot to avoid freeze/thaw cycles

**STABILITY**

Products are stable for one year from purchase when stored properly

**REFERENCES**

1. Scott, B.J., et al. APM2 is a novel mediator of cisplatin resistance in a variety of cancer cell types regardless of p53 or MMR status. Int. J. Cancer 2009, 125, 1193-1204

**PRODUCT SPECIFIC REFERENCES**