



SZABO SCANDIC

Part of Europa Biosite

Produktinformation



Forschungsprodukte & Biochemikalien



Zellkultur & Verbrauchsmaterial



Diagnostik & molekulare Diagnostik



Laborgeräte & Service

Weitere Information auf den folgenden Seiten!
See the following pages for more information!



Lieferung & Zahlungsart

siehe unsere [Liefer- und Versandbedingungen](#)

Zuschläge

- Mindermengenzuschlag
- Trockeneiszuschlag
- Gefahrgutzuschlag
- Expressversand

SZABO-SCANDIC HandelsgmbH

Quellenstraße 110, A-1100 Wien

T. +43(0)1 489 3961-0

F. +43(0)1 489 3961-7

mail@szabo-scandic.com

www.szabo-scandic.com

[linkedin.com/company/szaboscandic](https://www.linkedin.com/company/szaboscandic) 

Glypican-3 (GPC3). Sheep Polyclonal Antibody
GPC3, GPC-3, OCI5, OCI-5, GTR2-2, MXR7

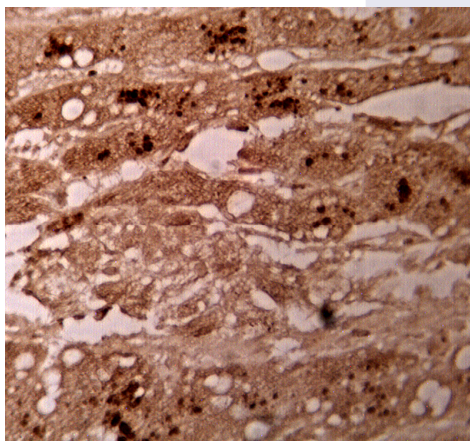
BACKGROUND

Glypican-3 encodes a putative extracellular proteoglycan that is inferred to play an important role in growth control in embryonic mesodermal tissues in which it is selectively expressed. It appears to form a complex with insulin-like growth factor and hence modulate IGF2 action. Glypican-3 is the human homolog of OCI-5, a GPI-linked proteoglycan first isolated from rat intestine. Originally identified as the molecular basis for Simpson-Golabi-Behmel syndrome (SGBS) also called Simpson dysmorphia syndrome (SDYS).

IMMUNOGEN

C terminal recombinant protein (~70aa) which does not overlap with clone 1G12 epitope)

Immunohistochemical staining using GPC3 antibody (Cat. No. X2395P) on human hepatocellular carcinoma tissue. Antibody used at 10 µg/ml. Secondary antibody, HRP conjugated mouse anti-sheep (Cat. No. X1206M), used at 1:20 dilution. Sections heated for 10 minutes with 10 mM sodium citrate.



ORDERING INFORMATION

CATALOG NUMBER
X2395P

SIZE

500 µg

FORM

Unconjugated

HOST/CLONE

Sheep

FORMULATION

Provided as solution in phosphate buffered saline with 0.08% sodium azide

CONCENTRATION

See vial for concentration

ISOTYPE

IgG

APPLICATIONS

IHC (paraffin), WB

SPECIES REACTIVITY

Human

ACCESSION NUMBER

Human P51654

POSITIVE CONTROL/TISSUE EXPRESSION

COMMENTS

Antibody can be used for immunohistochemistry on paraffin-embedded tissues (10 µg/ml) and Western blotting (5-10 µg/ml). Optimal concentration should be evaluated by serial dilutions.

PURIFICATION

Total IgG

SHIP CONDITIONS

Ship at ambient temperature, freeze upon arrival

STORAGE CUSTOMER

Product should be stored at -20°C. Aliquot to avoid freeze/thaw cycles

STABILITY

Products are stable for one year from purchase when stored properly

REFERENCES

1. Lai, J.P., et al. Sulfatase 2 up-regulates glypican 3, promotes fibroblast growth factor signaling, and decreases survival in hepatocellular carcinoma. *Hepatology* 2008, 47, 1211-1222.
2. Zynger, D.L., et al. Expression of glypican 3 in ovarian and extragonadal germ cell tumors. *Am. J. Clin. Pathol.* 2008, 130, 224-230.
3. Anatelli, F., et al. Value of glypican 3 immunostaining in the diagnosis of hepatocellular carcinoma on needle biopsy. *Am. J. Clin. Pathol.* 2008, 130, 219-223.
4. Yamanaka, K., et al. Immunohistochemical study of glypican 3 in thyroid cancer. *Oncology* 2007, 73, 389-394.
5. Filmus, J., et al. Glypicans. *Genome Biol.* 2008, 9, 224.
6. Baumhoer, D., et al. Glypican 3 expression in human nonneoplastic, preneoplastic, and neoplastic tissues: a tissue microarray analysis of 4,387 tissue samples. *Am. J. Clin. Pathol.* 2008, 129, 899-906.
7. Capurro, M.I., et al. Glypican-3 inhibits Hedgehog signaling during development by competing with patched for Hedgehog binding. *Dev. Cell* 2008, 14, 700-711.
8. Motomura, Y., et al. HLA-A2 and -A24-restricted glypican-3-derived peptide vaccine induces specific CTLs: preclinical study using mice. *Int. J. Oncol.* 2008, 32, 985-990.
9. Cheng W et al. Glypican-3-mediated oncogenesis involves the Insulin-like growth factor-signaling pathway

Last Modified
11/1/2012

For research use only. Not for use in human diagnostics or therapeutics.
Exalpha Biologicals, Inc. 2 Shaker Road, Bldg. B101 Shirley, MA 01464
Tel: 800.395.1137 Fax: 866.924.5100 www.exalpha.com info@exalpha.com

Page 2 of 2
Cat. No. X2395P