



SZABO SCANDIC

Part of Europa Biosite

Produktinformation



Forschungsprodukte & Biochemikalien



Zellkultur & Verbrauchsmaterial



Diagnostik & molekulare Diagnostik



Laborgeräte & Service

Weitere Information auf den folgenden Seiten!
See the following pages for more information!



Lieferung & Zahlungsart

siehe unsere [Liefer- und Versandbedingungen](#)

Zuschläge

- Mindermengenzuschlag
- Trockeneiszuschlag
- Gefahrgutzuschlag
- Expressversand

SZABO-SCANDIC HandelsgmbH

Quellenstraße 110, A-1100 Wien

T. +43(0)1 489 3961-0

F. +43(0)1 489 3961-7

mail@szabo-scandic.com

www.szabo-scandic.com

[linkedin.com/company/szaboscandic](https://www.linkedin.com/company/szaboscandic) 

Calcium Homeostasis Modulator Protein 1. Rabbit Polyclonal Antibody

CALHM1; FAM26C

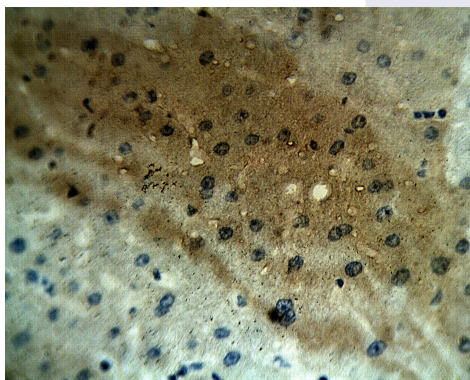
BACKGROUND

CALHM1 controls cytosolic Ca²⁺ permeability and cytosolic Ca²⁺ concentration. It controls amyloid precursor protein (APP) proteolysis and aggregated amyloid-beta (Aβ) peptides levels in a Ca²⁺ dependent manner. However, no association between CALHM1 and Alzheimer's risk is unclear. Member of the FAM26 family of proteins. CALHM1 is predominantly expressed in the adult brain. It has also been detected in retinoic acid-differentiated SH-SY5Y cells. Also colocalizes with HSPA5 at the endoplasmic reticulum.

IMMUNOGEN

Synthetic peptide derived from human CALHM1 protein.

Staining on paraffin embedded human hepatocellular carcinoma sections. Primary Ab at 10 µg/ml. Antigen retrieval used: 10 mM Na Citrate pH 6.0, 10 minutes pressure cooker method, developed with anti rabbit HRP and DAP substrate. Counterstained with methyl blue.



ORDERING INFORMATION

CATALOG NUMBER

X2410P

SIZE

100 µg

FORM

Unconjugated

HOST/CLONE

Rabbit

FORMULATION

Provided as solution in phosphate buffered saline with 0.08% sodium azide

CONCENTRATION

See vial for concentration

ISOTYPE

IgG

APPLICATIONS

Western Blotting, ELISA

SPECIES REACTIVITY

Human

ACCESSION NUMBER

Human Q8IU99

POSITIVE CONTROL/TISSUE EXPRESSION

Human hepatocellular carcinoma

COMMENTS

Antibody can be used for Western blotting (1-5 μ g/ml). Optimal concentration should be evaluated by serial dilutions.

PURIFICATION

Ammonium Sulfate Precipitation

SHIP CONDITIONS

Ship at ambient temperature, freeze upon arrival

STORAGE CUSTOMER

Product should be stored at -20°C. Aliquot to avoid freeze/thaw cycles

STABILITY

Products are stable for one year from purchase when stored properly

REFERENCES

1. Dreses-Werringloer, U., et al. A Polymorphism in CALHM1 Influences Ca²⁺ Homeostasis, Ab Levels, and Alzheimer's Disease Risk. Cell 2008, 133, 1149-1161
2. Bertram, L., et al. 'No association between CALHM1 and Alzheimer's disease risk.' Cell 2008, 135(6), 993-994.
3. Cui, P.J., et al. 'CALHM1 P86L polymorphism is a risk for Alzheimer's Disease in the Chinese population.' J. Alzheimers Dis. 2009, Epub ahead of

PRODUCT SPECIFIC REFERENCES