



SZABO SCANDIC

Part of Europa Biosite

Produktinformation



Forschungsprodukte & Biochemikalien



Zellkultur & Verbrauchsmaterial



Diagnostik & molekulare Diagnostik



Laborgeräte & Service

Weitere Information auf den folgenden Seiten!
See the following pages for more information!



Lieferung & Zahlungsart

siehe unsere [Liefer- und Versandbedingungen](#)

Zuschläge

- Mindermengenzuschlag
- Trockeneiszuschlag
- Gefahrgutzuschlag
- Expressversand

SZABO-SCANDIC HandelsgmbH

Quellenstraße 110, A-1100 Wien

T. +43(0)1 489 3961-0

F. +43(0)1 489 3961-7

mail@szabo-scandic.com

www.szabo-scandic.com

[linkedin.com/company/szaboscandic](https://www.linkedin.com/company/szaboscandic) 

Nucleolar Protein 4. Rabbit Polyclonal Antibody
NOL4

BACKGROUND

Novel methylation target specific for cervical cancer. Could be a marker in the early detection, risk prediction and etiologic research of cervical cancer. While the biological role of NOL4 in cervical cancer has yet to be determined, it is possible that it could be a potential tumor suppressor gene. It also appears to have important roles in cell cycle and apoptosis as well as functioning in ribosomal transcription and subunit assembly.

ORDERING INFORMATION

CATALOG NUMBER
X2417P

SIZE
100 μ g
FORM
Unconjugated

HOST/CLONE
Rabbit

FORMULATION
Provided as solution in phosphate buffered saline with 0.08% sodium azide

CONCENTRATION
See vial for concentration

ISOTYPE
IgG

APPLICATIONS
Western blotting, ELISA,
Immunohistochemistry

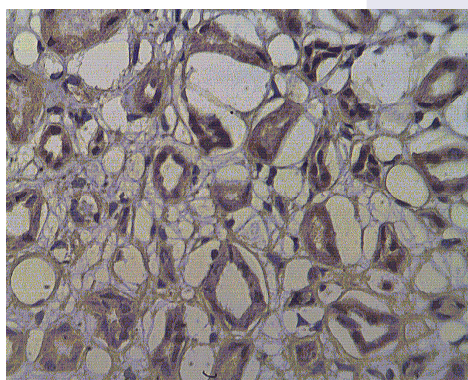
SPECIES REACTIVITY
Human

ACCESSION NUMBER
Human O94818

IMMUNOGEN

Synthetic peptide derived from the human NOL4 protein

Staining on paraffin embedded normal human kidney sections using NOL4 antibody (Cat. No. X2417P) at 10 μ g/ml. Antigen retrieval used: 10 mM Na Citrate pH 6.0, 10 minutes pressure cooker method., developed with anti rabbit HRP and DAP substrate. Counterstained with methyl blue.



POSITIVE CONTROL/TISSUE EXPRESSION

COMMENTS

Antibody can be used for Western blotting (1-5 $\mu\text{g/ml}$) and immunohistochemistry on paraffin embedded tissues (10 $\mu\text{g/ml}$). Optimal concentration should be evaluated by serial dilutions.

PURIFICATION

Ammonium Sulfate Precipitation

SHIP CONDITIONS

Ship at ambient temperature, freeze upon arrival

STORAGE CUSTOMER

Product should be stored at -20°C . Aliquot to avoid freeze/thaw cycles

STABILITY

Products are stable for one year from purchase when stored properly

REFERENCES

1. Ueki, N., et al. 'NOLP: identification of a novel human nucleolar protein and determination of sequence requirements for its nucleolar localization.' *Biochem Biophys Res Commun* 1998;252:97-102.
2. Wang, S.S., et al. 'Identification of novel methylation markers in cervical cancer using restriction landmark genomic scanning.' *Cancer Res* 2008;68:2489-2497.
3. Visintin R, et al. 'The nucleolus: the magician's hat for cell cycle tricks.' *Curr Opin Cell Biol* 2000;12:372-7.
4. Olson MO, et al. 'The nucleolus: an old factory with unexpected capabilities.' *Trends Cell Biol* 2000;10:189-96.

PRODUCT SPECIFIC REFERENCES