



# SZABO SCANDIC

Part of Europa Biosite

## Produktinformation



Forschungsprodukte & Biochemikalien



Zellkultur & Verbrauchsmaterial



Diagnostik & molekulare Diagnostik



Laborgeräte & Service

Weitere Information auf den folgenden Seiten!  
See the following pages for more information!



### Lieferung & Zahlungsart

siehe unsere [Liefer- und Versandbedingungen](#)

### Zuschläge

- Mindermengenzuschlag
- Trockeneiszuschlag
- Gefahrgutzuschlag
- Expressversand

### SZABO-SCANDIC HandelsgmbH

Quellenstraße 110, A-1100 Wien

T. +43(0)1 489 3961-0

F. +43(0)1 489 3961-7

[mail@szabo-scandic.com](mailto:mail@szabo-scandic.com)

[www.szabo-scandic.com](http://www.szabo-scandic.com)

[linkedin.com/company/szaboscandic](https://www.linkedin.com/company/szaboscandic) 

**Stanniocalcin-1 (STC1). Rabbit Antigen Immunoaffinity Purified Polyclonal**  
STC1

**BACKGROUND**

Stanniocalcin 1 is a secreted disulfide-linked homodimeric glycoprotein belonging to the stanniocalcin family of proteins. It is widely expressed and has endocrine/paracrine/autocrine functions relating to calcium and phosphate homeostasis, reproduction, and development. In the ovary, it has been shown to be a paracrine hormone that regulates granulosa cell function. It also has been known to stimulate renal phosphate reabsorption, and could therefore prevent hypercalcemia.

**ORDERING INFORMATION**

**CATALOG NUMBER**  
X2666P

**SIZE**  
10 Miniblots

**FORM**  
Affinity Purified

**HOST/CLONE**  
Rabbit

**FORMULATION**  
Provided as solution in phosphate buffered saline with 0.08% sodium azide

**CONCENTRATION**  
See vial for concentration

**ISOTYPE**  
IgG

**APPLICATIONS**  
Western Blot, ELISA

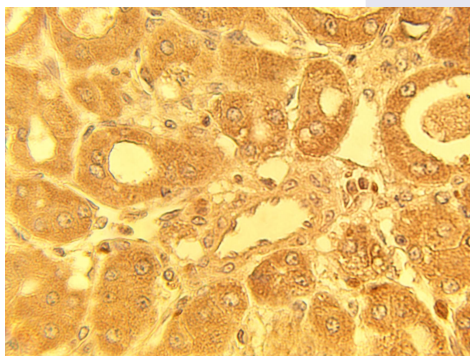
**SPECIES REACTIVITY**  
Human

**ACCESSION NUMBER**  
Human P52823

**IMMUNOGEN**

Synthetic peptide derived from the human STC-1 protein.

Immunohistochemical staining of human liver tumor tissue using STC1 antibody (Cat. No. X2666P) at 15  $\mu$ g/ml.



**POSITIVE CONTROL/TISSUE EXPRESSION**

Expressed in most tissues, with the highest levels in ovary, prostate, heart, kidney and thyroid. In the kidney, expression is confined to the nephron, specifically in the distal convoluted tubule and in the collecting tubule. Not detected in the brain, liver, spleen, peripheral blood leukocytes, adrenal medulla.

**COMMENTS**

Antibody can be used for immunohistochemistry (10-15  $\mu\text{g/ml}$ ). Optimal concentration should be evaluated by serial dilutions.

**PURIFICATION**

Antigen Immunoaffinity Purification

**SHIP CONDITIONS**

Ship at ambient temperature, freeze upon arrival

**STORAGE CUSTOMER**

Product should be stored at  $-20^{\circ}\text{C}$ . Aliquot to avoid freeze/thaw cycles

**STABILITY**

Products are stable for one year from purchase when stored properly

**REFERENCES**

1. Jeffrey K.J., Reddel R.R., 'Characterization of the human stanniocalcin 1 gene. Submitted (MAR-2000) to the EMBL/GenBank/DDBJ databases
2. Olsen H.S., Cepeda M.A., Zhang Q.-Q., Rosen C.A., Vozzolo B.L., Wagner G.F., Human stanniocalcin: a possible hormonal regulator of mineral metabolism. Proc. Natl. Acad. Sci. U.S.A. 93:1792-1796(1996) [PubMed: 8700837] [Abstract]

**PRODUCT SPECIFIC REFERENCES**