



# SZABO SCANDIC

Part of Europa Biosite

## Produktinformation



Forschungsprodukte & Biochemikalien



Zellkultur & Verbrauchsmaterial



Diagnostik & molekulare Diagnostik



Laborgeräte & Service

Weitere Information auf den folgenden Seiten!  
See the following pages for more information!



### Lieferung & Zahlungsart

siehe unsere [Liefer- und Versandbedingungen](#)

### Zuschläge

- Mindermengenzuschlag
- Trockeneiszuschlag
- Gefahrgutzuschlag
- Expressversand

### SZABO-SCANDIC HandelsgmbH

Quellenstraße 110, A-1100 Wien

T. +43(0)1 489 3961-0

F. +43(0)1 489 3961-7

[mail@szabo-scandic.com](mailto:mail@szabo-scandic.com)

[www.szabo-scandic.com](http://www.szabo-scandic.com)

[linkedin.com/company/szaboscandic](https://www.linkedin.com/company/szaboscandic) 

**α1C Calcium Channel. Rabbit Antigen Immunoaffinity Purified Polyclonal**  
RBC-II; Cav1.2; Calcium channel ( L type) voltage gated 1c; Cacna1c

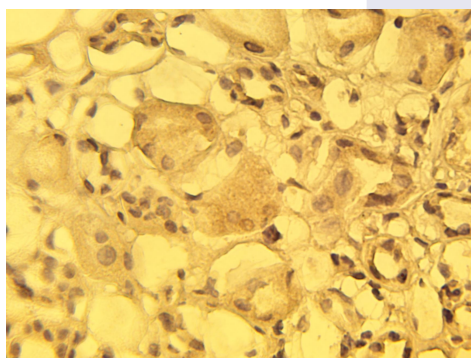
**BACKGROUND**

Voltage-sensitive calcium channels (VSCCs) mediate the entry of calcium ions into excitable cells and are also involved in a variety of calcium-dependent processes, including muscle contraction, hormone or neurotransmitter release, gene expression, cell motility, cell division and cell death. The isoform alpha-1c gives rise to L-type calcium currents. Long-lasting (L-type) calcium channels belong to the 'high-voltage activated' (HVA) group. They are blocked by dihydropyridines (DHP), phenylalkylamines, benzothiazepines, and by omega-agatoxin-IIIa (omega-aga-IIIa). They are however insensitive to omega-conotoxin-GVIA (omega-ctx-GVIA) and omega-agatoxin-IVA (omega-aga-IVA). Calcium channels containing the alpha-1c subunit play an important role in excitation-contraction coupling in the heart.

**IMMUNOGEN**

Synthetic peptide derived from the rat alpha1C calcium channel conjugated to KLH

Immunohistochemical staining of normal human kidney tissue with alpha1C calcium channel antibody (Cat. No. X2713P) at 15 µg/ml



**ORDERING INFORMATION**

**CATALOG NUMBER**  
X2713P

**SIZE**  
10 Miniblots

**FORM**  
Affinity Purified

**HOST/CLONE**  
Rabbit

**FORMULATION**  
Provided as solution in phosphate buffered saline with 0.08% sodium azide

**CONCENTRATION**  
See vial for concentration

**ISOTYPE**  
IgG

**APPLICATIONS**  
Western Blot

**SPECIES REACTIVITY**  
Human

**ACCESSION NUMBER**  
Human Q13936

**POSITIVE CONTROL/TISSUE EXPRESSION**

Normal human kidney tissue

**COMMENTS**

Antibody can be used for Western blotting (1:400 dilution). Optimal concentration should be evaluated by serial dilutions.

**PURIFICATION**

Antigen Immunoaffinity Purification

**SHIP CONDITIONS**

Ship at ambient temperature, freeze upon arrival

**STORAGE CUSTOMER**

Product should be stored at -20°C. Aliquot to avoid freeze/thaw cycles

**STABILITY**

Products are stable for one year from purchase when stored properly

**REFERENCES**

1. Snutch, T.P. et.al 'Distinct calcium channels are generated by alternative splicing and are differentially expressed in the mammalian' CNS Neuron 7 (1), 45-57 (1991)
2. Hansen, P.B. et.al 'Differential expression of T- and L-type voltage-dependent calcium channels in renal resistance vessels.' Circ Res;89(7):630-8 (2001)
3. Chung, Y.H. et.al 'Differential alterations in the distribution of voltage-gated calcium channels in aged rat cerebellum.' Brain Res 8;903(1-2):247-52.(2001)

**PRODUCT SPECIFIC REFERENCES**