



# SZABO SCANDIC

Part of Europa Biosite

## Produktinformation



Forschungsprodukte & Biochemikalien



Zellkultur & Verbrauchsmaterial



Diagnostik & molekulare Diagnostik



Laborgeräte & Service

Weitere Information auf den folgenden Seiten!  
See the following pages for more information!



### Lieferung & Zahlungsart

siehe unsere [Liefer- und Versandbedingungen](#)

### Zuschläge

- Mindermengenzuschlag
- Trockeneiszuschlag
- Gefahrgutzuschlag
- Expressversand

### SZABO-SCANDIC HandelsgmbH

Quellenstraße 110, A-1100 Wien

T. +43(0)1 489 3961-0

F. +43(0)1 489 3961-7

[mail@szabo-scandic.com](mailto:mail@szabo-scandic.com)

[www.szabo-scandic.com](http://www.szabo-scandic.com)

[linkedin.com/company/szaboscandic](https://www.linkedin.com/company/szaboscandic) 

**Calcium Homeostasis Modulator Protein 1. Rabbit Antigen Immunoaffinity Purified Polyclonal**  
CALHM1; FAM26C

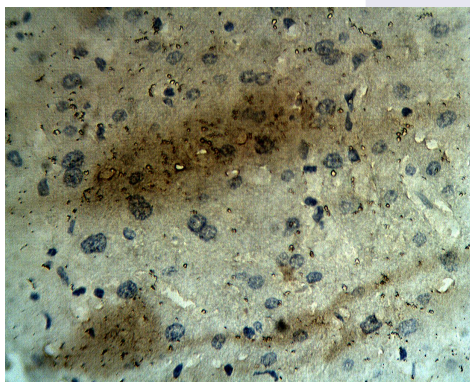
**BACKGROUND**

CALHM1 controls cytosolic Ca<sup>2+</sup> permeability and cytosolic Ca<sup>2+</sup> concentration. It controls amyloid precursor protein (APP) proteolysis and aggregated amyloid-beta (Aβ) peptides levels in a Ca<sup>2+</sup> dependent manner. However, no association between CALHM1 and Alzheimer's risk is unclear. Member of the FAM26 family of proteins. CALHM1 is predominantly expressed in the adult brain. It has also been detected in retinoic acid-differentiated SH-SY5Y cells. Also colocalizes with HSPA5 at the endoplasmic reticulum.

**IMMUNOGEN**

Synthetic peptide derived from human CALHM1 protein.

Staining on paraffin embedded human hepatocellular carcinoma sections. Primary Ab (immunoaffinity purified) at 10 μg/ml. Antigen retrieval used: 10 mM Na Citrate pH 6.0, 10 minutes pressure cooker method, developed with anti rabbit HRP and DAP substrate. Counterstained with methyl blue.



**ORDERING INFORMATION**

**CATALOG NUMBER**  
X2723P

**SIZE**  
10 Miniblots

**FORM**  
Affinity Purified

**HOST/CLONE**  
Rabbit

**FORMULATION**  
Provided as solution in phosphate buffered saline with 0.08% sodium azide

**CONCENTRATION**  
See vial for concentration

**ISOTYPE**  
IgG

**APPLICATIONS**  
Western Blotting, ELISA

**SPECIES REACTIVITY**  
Human

**ACCESSION NUMBER**  
Human Q8IU99

**POSITIVE CONTROL/TISSUE EXPRESSION**

Human hepatocellular carcinoma

**COMMENTS**

Antibody can be used for Western Blotting (1:400 dilution) and immunohistochemistry (2-10 µg/ml). Optimal concentration should be evaluated by serial dilutions.

**PURIFICATION**

Ammonium Sulfate Precipitation

**SHIP CONDITIONS**

Ship at ambient temperature, freeze upon arrival

**STORAGE CUSTOMER**

Product should be stored at -20°C. Aliquot to avoid freeze/thaw cycles

**STABILITY**

Products are stable for one year from purchase when stored properly

**REFERENCES**

1. Dreses-Werringloer, U., et al. A Polymorphism in CALHM1 Influences Ca<sup>2+</sup> Homeostasis, Ab Levels, and Alzheimer's Disease Risk. Cell 2008, 133, 1149-1161
2. Bertram, L., et al. 'No association between CALHM1 and Alzheimer's disease risk.' Cell 2008, 135(6), 993-994.
3. Cui, P.J., et al. 'CALHM1 P86L polymorphism is a risk for Alzheimer's Disease in the Chinese population.' J. Alzheimers Dis. 2009, Epub ahead of

**PRODUCT SPECIFIC REFERENCES**