



SZABO SCANDIC

Part of Europa Biosite

Produktinformation



Forschungsprodukte & Biochemikalien



Zellkultur & Verbrauchsmaterial



Diagnostik & molekulare Diagnostik



Laborgeräte & Service

Weitere Information auf den folgenden Seiten!
See the following pages for more information!



Lieferung & Zahlungsart

siehe unsere [Liefer- und Versandbedingungen](#)

Zuschläge

- Mindermengenzuschlag
- Trockeneiszuschlag
- Gefahrgutzuschlag
- Expressversand

SZABO-SCANDIC HandelsgmbH

Quellenstraße 110, A-1100 Wien

T. +43(0)1 489 3961-0

F. +43(0)1 489 3961-7

mail@szabo-scandic.com

www.szabo-scandic.com

[linkedin.com/company/szaboscandic](https://www.linkedin.com/company/szaboscandic) 

Small ubiquitin-related modifier 1 (SUMO-1). Rabbit Antigen Immunoaffinity Purified Polyclonal
Ubiquitin-like protein SMT3C, Sentrin, Ubiquitin-homology domain protein PIC1, Ubiquitin-like protein UBL1. GAP-modifying protein 1, GMP-1

BACKGROUND

Ubiquitin-like protein which can be covalently attached to target lysines as a monomer. Does not seem to be involved in protein degradation and may function as an antagonist of ubiquitin in the degradation process. Plays a role in a number of cellular processes such as nuclear transport, DNA replication and repair, mitosis and signal transduction. Involved in targeting RANGAP1 to the nuclear pore complex protein RANBP2. Covalent attachment to its substrates requires prior activation by the E1 complex SAE1-SAE2 and linkage to the E2 enzyme UBE2L, and can be promoted by an E3 ligase such as PIAS1-4, RANBP2 or CBX4

ORDERING INFORMATION

CATALOG NUMBER
X2724P

SIZE
10 Miniblots

FORM
Affinity Purified

HOST/CLONE
Rabbit

FORMULATION
Provided as solution in phosphate buffered saline with 0.08% sodium azide

CONCENTRATION
See vial for concentration

ISOTYPE
IgG

APPLICATIONS
Western Blotting, ELISA

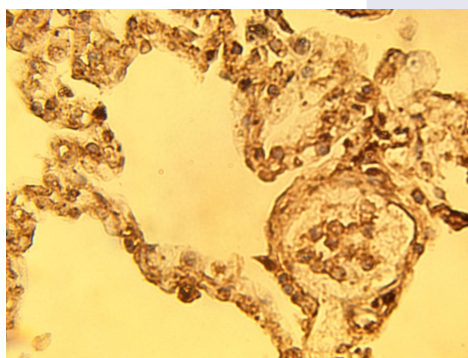
SPECIES REACTIVITY
Human

ACCESSION NUMBER
Human P63165

IMMUNOGEN

Synthetic peptide derived from the human SUMO-1 protein.

Immunohistochemical staining of normal human lung tissue using SUMO-1 antibody (Cat. No. X2724P) at 15 µg/ml.



POSITIVE CONTROL/TISSUE EXPRESSION

Human lung tissue

COMMENTS

Antibody can be used for Western blotting (1:400 dilution) and immunohistochemistry (10-15µg/ml). Optimal concentration should be evaluated by serial dilutions.

PURIFICATION

Antigen Immunoaffinity Purification

SHIP CONDITIONS

Ship at ambient temperature, freeze upon arrival

STORAGE CUSTOMER

Product should be stored at -20°C. Aliquot to avoid freeze/thaw cycles

STABILITY

Products are stable for one year from purchase when stored properly

REFERENCES

1. Saitoh, H., et al. 'SUMO-1: wrestling with a new ubiquitin-related modifier.' Trends Biochem Sci 1997; 22(10):374-376
2. Muller, S., et al. 'Conjugation with the ubiquitin-related modifier SUMO-1 regulated the partitioning of PML within the nucleus.' EMBO J 1998; 17(1):61-70
3. Navascues J., et al. 'SUMO-1 transiently localizes to Cajal bodies in mammalian neurons.' J Struct Biol 2008; 163 (2):137-146.

PRODUCT SPECIFIC REFERENCES