



# SZABO SCANDIC

Part of Europa Biosite

## Produktinformation



Forschungsprodukte & Biochemikalien



Zellkultur & Verbrauchsmaterial



Diagnostik & molekulare Diagnostik



Laborgeräte & Service

Weitere Information auf den folgenden Seiten!  
See the following pages for more information!



### Lieferung & Zahlungsart

siehe unsere [Liefer- und Versandbedingungen](#)

### Zuschläge

- Mindermengenzuschlag
- Trockeneiszuschlag
- Gefahrgutzuschlag
- Expressversand

### SZABO-SCANDIC HandelsgmbH

Quellenstraße 110, A-1100 Wien

T. +43(0)1 489 3961-0

F. +43(0)1 489 3961-7

[mail@szabo-scandic.com](mailto:mail@szabo-scandic.com)

[www.szabo-scandic.com](http://www.szabo-scandic.com)

[linkedin.com/company/szaboscandic](https://www.linkedin.com/company/szaboscandic) 

**Corticotropin-releasing hormone receptor 2. Rabbit Antigen Immunoaffinity Purified Polyclonal**  
CRF-R2; CRF2

**BACKGROUND**

CRF2 is a receptor for corticotropin releasing factor. Shows high-affinity CRF binding. Also binds to urocortin I, II and III. The activity of this receptor is mediated by G proteins which activate adenylyl cyclase. Expression levels shown to be comparable in adipose tissues and the heart of humans. Expression in adipose tissues suggests a functional role for CRH in human fat.

**ORDERING INFORMATION**

**CATALOG NUMBER**  
X2726P

**SIZE**  
10 Miniblots

**FORM**  
Affinity Purified

**HOST/CLONE**  
Rabbit

**FORMULATION**  
Provided as solution in phosphate buffered saline with 0.08% sodium azide

**CONCENTRATION**  
See vial for concentration

**ISOTYPE**

**APPLICATIONS**  
Western Blotting, ELISA, Immunohistochemistry

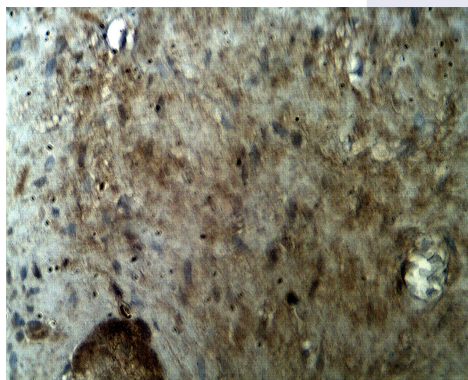
**SPECIES REACTIVITY**  
Human

**ACCESSION NUMBER**  
Human Q13324

**IMMUNOGEN**

Synthetic peptide derived from the N-terminal region of the CRF2R protein.

Staining of normal human colorectal tissue with CRFR1 antibody (Cat. No. X2726P) at 2  $\mu$ g/ml.



**POSITIVE CONTROL/TISSUE EXPRESSION**

Human colorectal tissue

**COMMENTS**

Antibody can be used for Western blotting (1:400 dilution) and immunohistochemistry on paraffin embedded tissues (2-10 µg/ml). Optimal concentration should be evaluated by serial dilutions.

**PURIFICATION**

Antigen Immunoaffinity Purification

**SHIP CONDITIONS**

Ship at ambient temperature, freeze upon arrival

**STORAGE CUSTOMER**

Product should be stored at -20°C. Aliquot to avoid freeze/thaw cycles

**STABILITY**

Products are stable for one year from purchase when stored properly

**REFERENCES**

1. Liaw, C.W., et al. 'Cloning and characterization of the human corticotropin-releasing factor-2 receptor complementary deoxyribonucleic acid.' *Endocrinology* 1996, 137, 72-77.
2. Isfort, R.J., et al. 'Discovery of corticotropin releasing factor 2 receptor selective sauvagine analogues for treatment of skeletal muscle atrophy.' *J. Med. Chem.* 2005, 48, 262-265.
3. Argiles, J.M., et al. 'Effects of CRF2R agonist on tumor growth and cachexia in mice implanted with Lewis lung carcinoma cells.' *Muscle Nerve* 2008, 37, 190-195.
4. Tao, J., et al. 'Activation of corticotropin-releasing factor 2 receptor inhibits Purkinje neuron P-type calcium currents via G(o)alpha-dependent PKC epsilon pathway.' *Cell Signal* 2009, 21, 1436-1443.
5. Seres, J., et al. 'Corticotropin-releasing hormone system in human adipose tissue.' *J. Clin. Endocrin. & Metab.* 2004, 89, 965-970.

**PRODUCT SPECIFIC REFERENCES**