



# SZABO SCANDIC

Part of Europa Biosite

## Produktinformation



Forschungsprodukte & Biochemikalien



Zellkultur & Verbrauchsmaterial



Diagnostik & molekulare Diagnostik



Laborgeräte & Service

Weitere Information auf den folgenden Seiten!  
See the following pages for more information!



### Lieferung & Zahlungsart

siehe unsere [Liefer- und Versandbedingungen](#)

### Zuschläge

- Mindermengenzuschlag
- Trockeneiszuschlag
- Gefahrgutzuschlag
- Expressversand

### SZABO-SCANDIC HandelsgmbH

Quellenstraße 110, A-1100 Wien

T. +43(0)1 489 3961-0

F. +43(0)1 489 3961-7

[mail@szabo-scandic.com](mailto:mail@szabo-scandic.com)

[www.szabo-scandic.com](http://www.szabo-scandic.com)

[linkedin.com/company/szaboscandic](https://www.linkedin.com/company/szaboscandic) 

**Nucleolar Protein 4. Rabbit Antigen Immunoaffinity Purified Polyclonal**  
NOL4

**BACKGROUND**

Novel methylation target specific for cervical cancer. Could be a marker in the early detection, risk prediction and etiologic research of cervical cancer. While the biological role of NOL4 in cervical cancer has yet to be determined, it is possible that it could be a potential tumor suppressor gene. It also appears to have important roles in cell cycle and apoptosis as well as functioning in ribosomal transcription and subunit assembly.

**ORDERING INFORMATION**

**CATALOG NUMBER**  
X2728P

**SIZE**  
10 Miniblots

**FORM**  
Affinity Purified

**HOST/CLONE**  
Rabbit

**FORMULATION**  
Provided as solution in phosphate buffered saline with 0.08% sodium azide

**CONCENTRATION**  
See vial for concentration

**ISOTYPE**  
IgG

**APPLICATIONS**  
Western blotting, ELISA,  
Immunohistochemistry

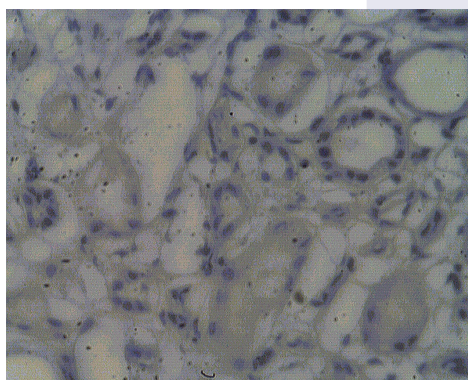
**SPECIES REACTIVITY**  
Human

**ACCESSION NUMBER**  
Human      O94818

**IMMUNOGEN**

Synthetic peptide derived from the human NOL4 protein

Staining on paraffin embedded normal human kidney sections using NOL4 antibody (Cat. No. X2728P) at 2 µg/ml. Antigen retrieval used: 10 mM Na Citrate pH 6.0, 10 minutes pressure cooker method., developed with anti rabbit HRP and DAP substrate. Counterstained with methyl blue.



## **POSITIVE CONTROL/TISSUE EXPRESSION**

### **COMMENTS**

Antibody can be used for Western blotting (1:400 dilution) and immunohistochemistry on paraffin embedded tissues (2  $\mu\text{g}/\text{ml}$ ). Optimal concentration should be evaluated by serial dilutions.

### **PURIFICATION**

Antigen Immunoaffinity Purification

### **SHIP CONDITIONS**

Ship at ambient temperature, freeze upon arrival

### **STORAGE CUSTOMER**

Product should be stored at  $-20^{\circ}\text{C}$ . Aliquot to avoid freeze/thaw cycles

### **STABILITY**

Products are stable for one year from purchase when stored properly

### **REFERENCES**

1. Ueki, N., et al. 'NOLP: identification of a novel human nucleolar protein and determination of sequence requirements for its nucleolar localization.' *Biochem Biophys Res Commun* 1998;252:97-102.
2. Wang, S.S., et al. 'Identification of novel methylation markers in cervical cancer using restriction landmark genomic scanning.' *Cancer Res* 2008;68:2489-2497.
3. Visintin R, et al. 'The nucleolus: the magician's hat for cell cycle tricks.' *Curr Opin Cell Biol* 2000;12:372-7.
4. Olson MO, et al. 'The nucleolus: an old factory with unexpected capabilities.' *Trends Cell Biol* 2000;10:189-96.

### **PRODUCT SPECIFIC REFERENCES**