



SZABO SCANDIC

Part of Europa Biosite

Produktinformation



Forschungsprodukte & Biochemikalien



Zellkultur & Verbrauchsmaterial



Diagnostik & molekulare Diagnostik



Laborgeräte & Service

Weitere Information auf den folgenden Seiten!
See the following pages for more information!



Lieferung & Zahlungsart

siehe unsere [Liefer- und Versandbedingungen](#)

Zuschläge

- Mindermengenzuschlag
- Trockeneiszuschlag
- Gefahrgutzuschlag
- Expressversand

SZABO-SCANDIC HandelsgmbH

Quellenstraße 110, A-1100 Wien

T. +43(0)1 489 3961-0

F. +43(0)1 489 3961-7

mail@szabo-scandic.com

www.szabo-scandic.com

[linkedin.com/company/szaboscandic](https://www.linkedin.com/company/szaboscandic) 

BCRP (ATP-binding cassette sub-family G member 2). Rabbit Antigen Immunoaffinity Purified Polyclonal
Breast cancer resistance protein; CDw338; Mitoxantrane resistance-associated protein; Placenta-specific ATP-binding cassette

BACKGROUND

BCRP acts as a xenobiotic transporter that may play an important role in the exclusion of xenobiotics from the brain. May be involved in brain-to-blood efflux. Appears to play a major role in the multidrug resistance phenotype of several cancer cell lines. When overexpressed, the transfected cells become resistant to mitoxantrone, daunorubicin and doxorubicin, display diminished intracellular accumulation of daunorubicin, and manifest an ATP-dependent increase in the efflux of rhodamine 123.

ORDERING INFORMATION

CATALOG NUMBER
X2731P

SIZE

100 μ g

FORM

Affinity Purified

HOST/CLONE

Rabbit

FORMULATION

Provided as solution in phosphate buffered saline with 0.08% sodium azide

CONCENTRATION

See vial for concentration

ISOTYPE

Ig

APPLICATIONS

Immunohistochemistry (paraffin-embedded)

SPECIES REACTIVITY

Human

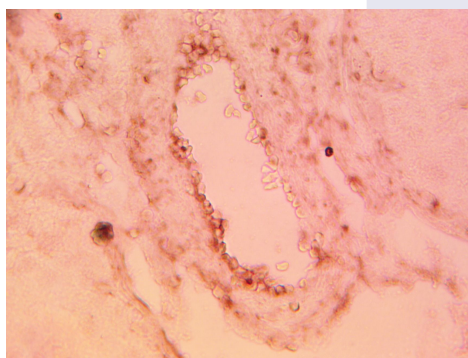
ACCESSION NUMBER

Human Q9UNQ0

IMMUNOGEN

Synthetic peptide derived from human BCRP protein

Immunohistochemical staining of normal human testis tissue using BCRP antibody (Cat. No. X2731P) at 10 μ g/ml and detected using anti-Rabbit HRP secondary antibody and visualized using DAB substrate and hematoxylin counterstain.



POSITIVE CONTROL/TISSUE EXPRESSION

Highly expressed in placenta

COMMENTS

Antibody can be used for immunohistochemistry at 5-10 $\mu\text{g/ml}$ on paraffin-embedded tissues. Optimal concentration should be evaluated by serial dilutions.

PURIFICATION

Antigen Immunoaffinity Purification

SHIP CONDITIONS

Ship at ambient temperature, freeze upon arrival

STORAGE CUSTOMER

Product should be stored at -20°C . Aliquot to avoid freeze/thaw cycles

STABILITY

Products are stable for one year from purchase when stored properly

REFERENCES

1. Zhou, W., et al. 'The ABC transporter Bcrp1/ABCG2 is expressed in a wide variety of stem cells and is a molecular determinant of the side-population phenotype.' *Nat. Med.* 2001, 7, 1028-1034.
2. Itoda, M., et al. 'Eight novel single nucleotide polymorphisms in ABCG2/BCRP in Japanese cancer patients administered irinotecan.' *Drug Metab. Pharmacokinet.* 2003, 18, 212-217.
3. Zamber, C.P., et al. 'Natural allelic variants of breast cancer resistance protein (BCRP) and their relationship to BCRP expression in human intestine.' *Pharmacogenetics* 2003, 13, 19-28.

PRODUCT SPECIFIC REFERENCES