



SZABO SCANDIC

Part of Europa Biosite

Produktinformation



Forschungsprodukte & Biochemikalien



Zellkultur & Verbrauchsmaterial



Diagnostik & molekulare Diagnostik



Laborgeräte & Service

Weitere Information auf den folgenden Seiten!
See the following pages for more information!



Lieferung & Zahlungsart

siehe unsere [Liefer- und Versandbedingungen](#)

Zuschläge

- Mindermengenzuschlag
- Trockeneiszuschlag
- Gefahrgutzuschlag
- Expressversand

SZABO-SCANDIC HandelsgmbH

Quellenstraße 110, A-1100 Wien

T. +43(0)1 489 3961-0

F. +43(0)1 489 3961-7

mail@szabo-scandic.com

www.szabo-scandic.com

[linkedin.com/company/szaboscandic](https://www.linkedin.com/company/szaboscandic) 

Ribonucleoside-diphosphate reductase, large subunit (RRM1). Rabbit Antigen Immunoaffinity Purified Polyclonal
Ribonucleoside-diphosphate reductase subunit M1, EC=1.17.4.1, Ribonucleoside-diphosphate reductase subunit M1, Ribonucleotide

BACKGROUND

This protein is one of two non-identical subunits that constitute ribonucleoside-diphosphate reductase, an enzyme essential for the production of deoxyribonucleotides prior to DNA synthesis in the S phase of dividing cells. The gene for RRM1 is, along with several others, located in the imprinted gene domain of 11p15.5, an important tumor-suppressor gene region. Alterations in this region are associated with the Beckwith-Wiedemann syndrome, Wilms tumor, rhabdomyosarcoma, adrenocortical carcinoma, and lung, ovarian, and breast cancer. RRM1 plays an important role in malignancies and disease that involve this region.

ORDERING INFORMATION

CATALOG NUMBER

X2735P

SIZE

100 µg

FORM

Affinity Purified

HOST/CLONE

Rabbit

FORMULATION

Provided as solution in phosphate buffered saline with 0.08% sodium azide

CONCENTRATION

See vial for concentration

ISOTYPE

Ig

APPLICATIONS

Immunohistochemistry, Western Blot, ELISA

SPECIES REACTIVITY

Human

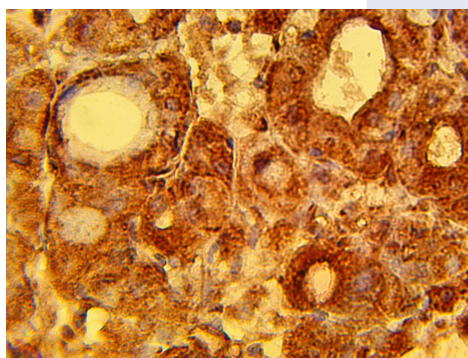
ACCESSION NUMBER

Human P23921

IMMUNOGEN

Synthetic peptide derived from the human RRM1 protein

Immunohistochemical staining of human liver tissue diagnosed with hepatocellular carcinoma using RRM1 antibody (Cat. No. X2735P) at 15 µg/ml and detected using anti-Rabbit HRP secondary antibody and visualized using DAB substrate and hematoxylin counterstain.



POSITIVE CONTROL/TISSUE EXPRESSION

COMMENTS

This antibody can be used for immunohistochemistry on formalin/paraffin sections (10-15 $\mu\text{g/ml}$). Optimal concentration should be evaluated by serial dilutions.

PURIFICATION

Antigen Immunoaffinity Purification

SHIP CONDITIONS

Ship at ambient temperature, freeze upon arrival

STORAGE CUSTOMER

Product should be stored at -20°C . Aliquot to avoid freeze/thaw cycles

STABILITY

Products are stable for one year from purchase when stored properly

REFERENCES

PRODUCT SPECIFIC REFERENCES