



SZABO SCANDIC

Part of Europa Biosite

Produktinformation



Forschungsprodukte & Biochemikalien



Zellkultur & Verbrauchsmaterial



Diagnostik & molekulare Diagnostik



Laborgeräte & Service

Weitere Information auf den folgenden Seiten!
See the following pages for more information!



Lieferung & Zahlungsart

siehe unsere [Liefer- und Versandbedingungen](#)

Zuschläge

- Mindermengenzuschlag
- Trockeneiszuschlag
- Gefahrgutzuschlag
- Expressversand

SZABO-SCANDIC HandelsgmbH

Quellenstraße 110, A-1100 Wien

T. +43(0)1 489 3961-0

F. +43(0)1 489 3961-7

mail@szabo-scandic.com

www.szabo-scandic.com

[linkedin.com/company/szaboscandic](https://www.linkedin.com/company/szaboscandic) 

PH domain leucine-rich repeat-containing protein phosphatase 2. Rabbit Antigen Immunoaffinity Purified Polyclonal
PHLPP2, PH domain leucine-rich repeat-containing protein phosphatase 2, PH domain leucine-rich repeat-containing protein

BACKGROUND

PHLPP2 is a protein phosphatase that mediates dephosphorylation of 'Ser-473' of AKT1, 'Ser-660' of PRKCB isoform beta-II and 'Ser-657' of PRKCA. AKT1 regulates the balance between cell survival and apoptosis through a cascade that primarily alters the function of transcription factors that regulate pro- and antiapoptotic genes. Dephosphorylation of 'Ser-473' of AKT1 triggers apoptosis and decreases cell proliferation. Also controls the phosphorylation of AKT3. Dephosphorylation of PRKCA and PRKCB leads to their destabilization and degradation. Inhibits cancer cell proliferation and may act as a tumor suppressor.

ORDERING INFORMATION

CATALOG NUMBER

X2737P

SIZE

100 μ g

FORM

Pure

HOST/CLONE

Rabbit

FORMULATION

Provided as solution in phosphate buffered saline with 0.08% sodium azide

CONCENTRATION

See vial for concentration

ISOTYPE

Ig

APPLICATIONS

Immunohistochemistry, Western Blot, ELISA

SPECIES REACTIVITY

Human

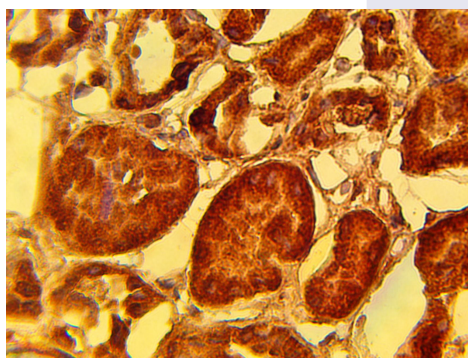
ACCESSION NUMBER

Human Q6ZVD8

IMMUNOGEN

Synthetic peptide derived from the human PHLPP2 protein

Immunohistochemical staining of normal human kidney tissue using PHLPP2 antibody (Cat. No. X2737P) at 15 μ g/ml and detected using anti-Rabbit HRP secondary antibody and visualized using DAB substrate and hematoxylin counterstain.



POSITIVE CONTROL/TISSUE EXPRESSION

Normal human kidney

COMMENTS

This antibody can be used for immunohistochemistry on formalin/paraffin sections (10-15 $\mu\text{g/ml}$). Optimal concentration should be evaluated by serial dilutions.

PURIFICATION

Antigen Immunoaffinity Purification

SHIP CONDITIONS

Ship at ambient temperature, freeze upon arrival

STORAGE CUSTOMER

Product should be stored at -20°C . Aliquot to avoid freeze/thaw cycles

STABILITY

Products are stable for one year from purchase when stored properly

REFERENCES**PRODUCT SPECIFIC REFERENCES**