



SZABO SCANDIC

Part of Europa Biosite

Produktinformation



Forschungsprodukte & Biochemikalien



Zellkultur & Verbrauchsmaterial



Diagnostik & molekulare Diagnostik



Laborgeräte & Service

Weitere Information auf den folgenden Seiten!
See the following pages for more information!



Lieferung & Zahlungsart

siehe unsere [Liefer- und Versandbedingungen](#)

Zuschläge

- Mindermengenzuschlag
- Trockeneiszuschlag
- Gefahrgutzuschlag
- Expressversand

SZABO-SCANDIC HandelsgmbH

Quellenstraße 110, A-1100 Wien

T. +43(0)1 489 3961-0

F. +43(0)1 489 3961-7

mail@szabo-scandic.com

www.szabo-scandic.com

[linkedin.com/company/szaboscandic](https://www.linkedin.com/company/szaboscandic) 

DDX4. Rabbit Antigen Immunoaffinity Purified Polyclonal

Probable ATP-dependent RNA Helicase DDX4; MVH; DEAD (Asp-Glu-Ala-Asp) box polypeptide 4

BACKGROUND

DDX4 is an ATP-dependent DEAD-box RNA helicase found in the chromatoid body of the germ cells (1). This enzyme is specific to germ cells and is necessary for germ cell development (2). Mouse DDX4 was shown to interact with Dicer, suggesting a role in microRNA-mediated RNA silencing (1).

ORDERING INFORMATION

CATALOG NUMBER

X2750P

SIZE

100

FORM

Affinity Purified

HOST/CLONE

Rabbit

FORMULATION

Provided as solution in phosphate buffered saline with 0.08% sodium azide

CONCENTRATION

See vial for concentration

ISOTYPE

Ig

APPLICATIONS

Western blot, Immunohistochemistry

SPECIES REACTIVITY

Human

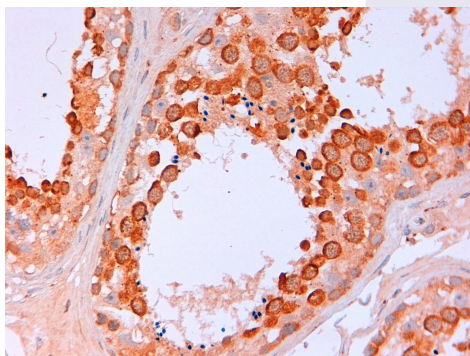
ACCESSION NUMBER

Human Q9NQI0

IMMUNOGEN

Synthetic peptide derived from the human DDX4 protein

Immunohistochemical staining of FFPE human testis using DDX4 antibody at 5 μ g/ml visualized using goat anti-rabbit-HRP secondary and DAB substrate at pH 6.2. Pathologist comment: Very good staining on germ cell testicular @ pH6.2, little background on tissue.



POSITIVE CONTROL/TISSUE EXPRESSION

Human testis tissue

COMMENTS

Antibody can be used for immunohistochemistry (2-5 $\mu\text{g/ml}$ at pH 6.2) and Western blot (1-5 $\mu\text{g/ml}$). Optimal concentration should be evaluated by serial dilutions.

PURIFICATION

Antigen Immunoaffinity Purification

SHIP CONDITIONS

Ship at ambient temperature, freeze upon arrival

STORAGE CUSTOMER

Product should be stored at -20°C . Aliquot to avoid freeze/thaw cycles

STABILITY

Products are stable for one year from purchase when stored properly

REFERENCES

1. Kotaja, N., et al. 'The chromatoid body of male germ cells: similarity with processing bodies and presence of Dicer and microRNA pathway components.' *Proc. Natl. Acad. Sci.*, 103, 2647-2652 (2006)
2. Albamonte, M.S., et al. 'The developing human ovary: immunohistochemical analysis of germ-cell-specific VASA protein, BCL-2/BAX expression balance and apoptosis.' *Hum. Reprod.* 23, 1895-1901 (2008)

PRODUCT SPECIFIC REFERENCES