



# SZABO SCANDIC

Part of Europa Biosite

## Produktinformation



Forschungsprodukte & Biochemikalien



Zellkultur & Verbrauchsmaterial



Diagnostik & molekulare Diagnostik



Laborgeräte & Service

Weitere Information auf den folgenden Seiten!  
See the following pages for more information!



### Lieferung & Zahlungsart

siehe unsere [Liefer- und Versandbedingungen](#)

### Zuschläge

- Mindermengenzuschlag
- Trockeneiszuschlag
- Gefahrgutzuschlag
- Expressversand

### SZABO-SCANDIC HandelsgmbH

Quellenstraße 110, A-1100 Wien

T. +43(0)1 489 3961-0

F. +43(0)1 489 3961-7

[mail@szabo-scandic.com](mailto:mail@szabo-scandic.com)

[www.szabo-scandic.com](http://www.szabo-scandic.com)

[linkedin.com/company/szaboscandic](https://www.linkedin.com/company/szaboscandic) 

**PDX1. Rabbit Antigen Immunoaffinity Purified Polyclonal**

Pancreas/Duodenum Homeobox Protein 1; Glucose-sensitive factor; Insulin promoter factor 1; Insulin upstream factor 1;

**BACKGROUND**

Activates insulin, somatostatin, glucokinase, islet amyloid polypeptide and glucose transporter type 2 gene transcription. Particularly involved in glucose-dependent regulation of insulin gene transcription. As part of a PDX1:PBX1b:MEIS2b complex in pancreatic acinar cells is involved in the transcriptional activation of the ELA1 enhancer; the complex binds to the enhancer B element and cooperates with the transcription factor 1 complex (PTF1) bound to the enhancer A element. Binds preferentially the DNA motif 5'-[CT]TAAT[ TG]-3'. During development, specifies the early pancreatic epithelium, permitting its proliferation, branching and subsequent differentiation. At adult stage, required for maintaining the hormone-producing phenotype of the beta-cell.

**ORDERING INFORMATION**

**CATALOG NUMBER**

X2755P

**SIZE**

100 µg

**FORM**

Affinity Purified

**HOST/CLONE**

Rabbit

**FORMULATION**

Provided as solution in phosphate buffered saline with 0.08% sodium azide

**CONCENTRATION**

See vial for concentration

**ISOTYPE**

IgG

**APPLICATIONS**

Western blot, Immunohistochemistry, EIA

**SPECIES REACTIVITY**

Human

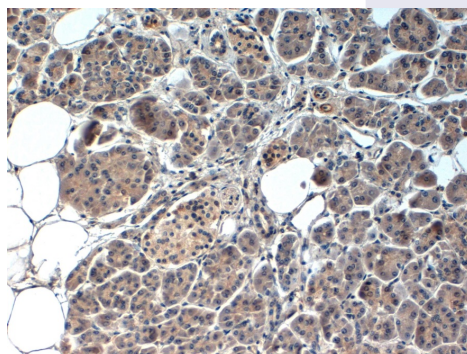
**ACCESSION NUMBER**

Human P52945

**IMMUNOGEN**

Synthetic peptide derived from human PDX1 protein.

Immunohistochemical staining of FFPE human pancreas tissue using PDX1 antibody (Cat. No. X2755P). Antibody used at 1 µg/ml and visualized using DAB. Pathologists comments: Positive nuclear and partial cytoplasmic staining.



## **POSITIVE CONTROL/TISSUE EXPRESSION**

### **COMMENTS**

Antibody can be used for immunohistochemical staining (1-5  $\mu$ g/ml). Optimal concentration should be evaluated by serial dilutions.

### **PURIFICATION**

Antigen Immunoaffinity Purification

### **SHIP CONDITIONS**

Ship at ambient temperature, freeze upon arrival

### **STORAGE CUSTOMER**

Product should be stored at -20°C. Aliquot to avoid freeze/thaw cycles

### **STABILITY**

Products are stable for one year from purchase when stored properly

### **REFERENCES**

1. Stoffers, D.A., et al. 'Pancreatic agenesis attributable to a single nucleotide deletion in the human IPF1 gene coding sequence.' *Nat. Genet.*, 15, 106-110 (1997)
2. Macfarlane, M.W., et al. 'Missense mutations in the insulin promoter factor-1 gene predispose to type 2 diabetes.' *J. Clin. Invest.*, 104, R33-R39 (1999)
3. Hani, E.H., et al. 'Defective mutations in the insulin promoter factor-1 (IPF-1) gene in late-onset type 2 diabetes mellitus.' *J. Clin. Invest.*, 104, R41-R48 (1999)
4. An, R., et al. 'Pancreatic and duodenal homeobox 1 (PDX1) phosphorylation at serine-269 is HIPK2-dependent and affects PDX1 subnuclear localization.' *Biochem. Biophys Res. Commun.*, 399, 155-161 (2010)

### **PRODUCT SPECIFIC REFERENCES**