



# SZABO SCANDIC

Part of Europa Biosite

## Produktinformation



Forschungsprodukte & Biochemikalien



Zellkultur & Verbrauchsmaterial



Diagnostik & molekulare Diagnostik



Laborgeräte & Service

Weitere Information auf den folgenden Seiten!  
See the following pages for more information!



### Lieferung & Zahlungsart

siehe unsere [Liefer- und Versandbedingungen](#)

### Zuschläge

- Mindermengenzuschlag
- Trockeneiszuschlag
- Gefahrgutzuschlag
- Expressversand

### SZABO-SCANDIC HandelsgmbH

Quellenstraße 110, A-1100 Wien

T. +43(0)1 489 3961-0

F. +43(0)1 489 3961-7

[mail@szabo-scandic.com](mailto:mail@szabo-scandic.com)

[www.szabo-scandic.com](http://www.szabo-scandic.com)

[linkedin.com/company/szaboscandic](https://www.linkedin.com/company/szaboscandic) 

**Serine/Threonine-protein kinase PINK1 (N-Terminal). Rabbit Antigen Immunoaffinity Purified Polyclonal**  
PTEN-induced putative kinase protein 1

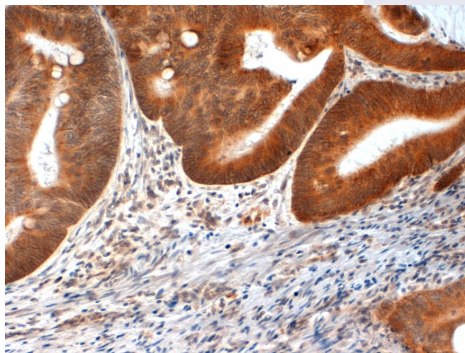
**BACKGROUND**

Protects against mitochondrial dysfunction during cellular stress, potentially by phosphorylating mitochondrial proteins. Involved in the clearance of damaged mitochondria via selective autophagy (mitophagy). It is necessary for PARK2 recruitment to dysfunctional mitochondria to initiate their degradation. Defects in PINK1 are the cause of Parkinson disease type 6 (PARK6). A neurodegenerative disorder characterized by parkinsonian signs such as rigidity, resting tremor and bradykinesia. A subset of patients manifest additional symptoms including hyperreflexia, autonomic instability, dementia and psychiatric disturbances. Symptoms show diurnal fluctuation and can improve after sleep.

**IMMUNOGEN**

Synthetic peptide derived from the N-terminal of the human PINK1 protein.

Immunohistochemical staining of FFPE human colon carcinoma tissue using PINK-1 (NT) antibody (Cat. No. X2759P). Antibody used at 1 µg/ml and visualized using DAB. Pathologists Comments: Cytoplasmic and partial nuclear staining of mucous cells.



**ORDERING INFORMATION**

**CATALOG NUMBER**  
X2759P

**SIZE**  
100 µg

**FORM**  
Affinity Purified

**HOST/CLONE**  
Rabbit

**FORMULATION**  
Provided as solution in phosphate buffered saline with 0.08% sodium azide

**CONCENTRATION**  
See vial for concentration

**ISOTYPE**  
IgG

**APPLICATIONS**  
Western blot, Immunohistochemistry, EIA

**SPECIES REACTIVITY**  
Human

**ACCESSION NUMBER**  
Human Q9BXM7

## **POSITIVE CONTROL/TISSUE EXPRESSION**

### **COMMENTS**

Antibody can be used for immunohistochemical staining (1-5  $\mu\text{g/ml}$ ). Optimal concentration should be evaluated by serial dilutions.

### **PURIFICATION**

Antigen Immunoaffinity Purification

### **SHIP CONDITIONS**

Ship at ambient temperature, freeze upon arrival

### **STORAGE CUSTOMER**

Product should be stored at  $-20^{\circ}\text{C}$ . Aliquot to avoid freeze/thaw cycles

### **STABILITY**

Products are stable for one year from purchase when stored properly

### **REFERENCES**

1. Matsuda, N., et al. 'PINK1 stabilized by mitochondrial depolarization recruits Parkin to damaged mitochondria and activates latent Parkin for mitophagy.' J. Cell. Biol., 189, 211-221 (2010)
2. Vives-Bauza, C., et al. 'PINK1-dependent recruitment of Parkin to mitochondria in mitophagy.' Proc. Natl. Acad. Sci. USA, 107, 378-383 (2010)
3. Valente, E.M., et al. 'PINK1 mutations are associated with sporadic early-onset parkinsonism.' Ann. Neurol., 56, 336-341 (2004)

### **PRODUCT SPECIFIC REFERENCES**