



# SZABO SCANDIC

Part of Europa Biosite

## Produktinformation



Forschungsprodukte & Biochemikalien



Zellkultur & Verbrauchsmaterial



Diagnostik & molekulare Diagnostik



Laborgeräte & Service

Weitere Information auf den folgenden Seiten!  
See the following pages for more information!



### Lieferung & Zahlungsart

siehe unsere [Liefer- und Versandbedingungen](#)

### Zuschläge

- Mindermengenzuschlag
- Trockeneiszuschlag
- Gefahrgutzuschlag
- Expressversand

### SZABO-SCANDIC HandelsgmbH

Quellenstraße 110, A-1100 Wien

T. +43(0)1 489 3961-0

F. +43(0)1 489 3961-7

[mail@szabo-scandic.com](mailto:mail@szabo-scandic.com)

[www.szabo-scandic.com](http://www.szabo-scandic.com)

[linkedin.com/company/szaboscandic](https://www.linkedin.com/company/szaboscandic) 

## TrkB (phospho Tyr516) antibody

**Cat No. GTX00804**

<b>Host</b>	Rabbit
<b>Clonality</b>	Polyclonal
<b>Isotype</b>	IgG
<b>Application</b>	WB, ICC/IF, IHC-P, ELISA
<b>Reactivity</b>	Human, Mouse, Rat

**Package**  
100 µl

## APPLICATION

**Application Note**

\*Optimal dilutions/concentrations should be determined by the researcher.

Suggested dilution	Dilution
WB	1:500-1:2000
ICC/IF	1:100-1:500
IHC-P	1:50-1:200
ELISA	Assay dependent

Not tested in other applications.

**Calculated MW** 92 kDa. ([Note](#))

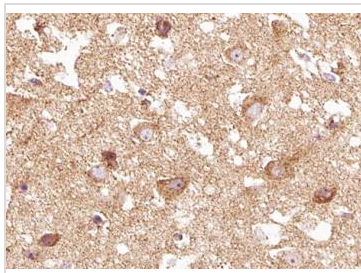
## PROPERTIES

<b>Form</b>	Liquid
<b>Buffer</b>	PBS pH 7.4, 150mM NaCl, 0.02% sodium azide, 50% glycerol
<b>Storage</b>	Store as concentrated solution. Centrifuge briefly prior to opening vial. For short-term storage (1-2 weeks), store at 4°C. For long-term storage, aliquot and store at -20°C or below. Avoid multiple freeze-thaw cycles.
<b>Concentration</b>	1 mg/ml (Please refer to the vial label for the specific concentration.)
<b>Immunogen</b>	A synthesized peptide derived from human Trk B around the phosphorylation site of Tyr516.
<b>Purification</b>	Purified by sequential chromatography on phospho-peptide and non-phospho-peptide columns From serum
<b>Conjugation</b>	Unconjugated
<b>Note</b>	For laboratory use only. Not for any clinical, therapeutic, or diagnostic use in humans or animals. Not for animal or human consumption.



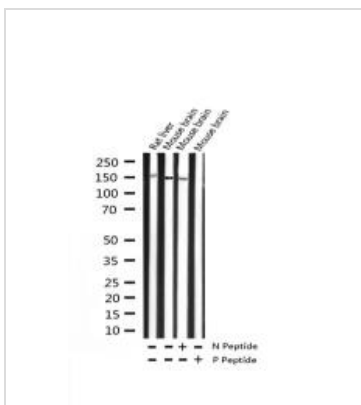
For full product information, images and publications, please visit our [website](#).

DATA IMAGES



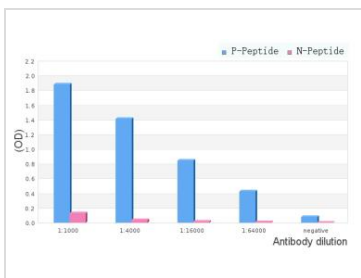
**GTX00804 IHC-P Image**

IHC-P analysis of staining human brain tissue using GTX00804 TrkB (phospho Tyr516) antibody.  
 Antigen retrieval : Heat mediated antigen retrieval step in citrate buffer  
 Dilution : 1:100



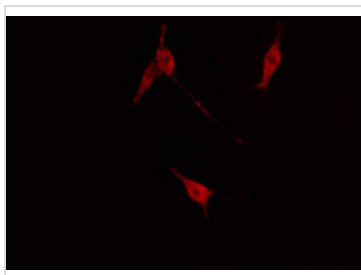
**GTX00804 WB Image**

WB analysis of extracts from rat liver and mouse brain tissue lysate using GTX00804 TrkB (phospho Tyr516) antibody pre-incubated with phospho- or non-phospho- peptide.  
 P-peptide : phospho-peptide  
 N-peptide : non-phospho-peptide



**GTX00804 ELISA Image**

ELISA analysis of phospho- and non phospho- immunogen peptide using GTX00804 TrkB (phospho Tyr516) antibody.  
 P-peptide : phospho-peptide  
 N-peptide : non-phospho-peptide  
 Peptides concentration : 1µg/ml



**GTX00804 ICC/IF Image**

ICC/IF analysis of PFA-fixed NIH-3T3 cells using GTX00804 TrkB (phospho Tyr516) antibody.  
 Permeabilization : 0.1% Triton X-100  
 Dilution : 1:200



For full product information, images and publications, please visit our [website](http://www.genetex.com).