



# SZABO SCANDIC

Part of Europa Biosite

## Produktinformation



Forschungsprodukte & Biochemikalien



Zellkultur & Verbrauchsmaterial



Diagnostik & molekulare Diagnostik



Laborgeräte & Service

Weitere Information auf den folgenden Seiten!  
See the following pages for more information!



### Lieferung & Zahlungsart

siehe unsere [Liefer- und Versandbedingungen](#)

### Zuschläge

- Mindermengenzuschlag
- Trockeneiszuschlag
- Gefahrgutzuschlag
- Expressversand

### SZABO-SCANDIC HandelsgmbH

Quellenstraße 110, A-1100 Wien

T. +43(0)1 489 3961-0

F. +43(0)1 489 3961-7

[mail@szabo-scandic.com](mailto:mail@szabo-scandic.com)

[www.szabo-scandic.com](http://www.szabo-scandic.com)

[linkedin.com/company/szaboscandic](https://www.linkedin.com/company/szaboscandic) 

## RUNX2 (phospho Ser275) antibody

**Cat No. GTX00813**

|                    |                          |
|--------------------|--------------------------|
| <b>Host</b>        | Rabbit                   |
| <b>Clonality</b>   | Polyclonal               |
| <b>Isotype</b>     | IgG                      |
| <b>Application</b> | WB, ICC/IF, IHC-P, ELISA |
| <b>Reactivity</b>  | Human, Mouse, Rat        |

**Package**  
100 µl

## APPLICATION

**Application Note**

\*Optimal dilutions/concentrations should be determined by the researcher.

| Suggested dilution | Dilution        |
|--------------------|-----------------|
| WB                 | 1:500-1:2000    |
| ICC/IF             | 1:100-1:500     |
| IHC-P              | 1:50-1:200      |
| ELISA              | Assay dependent |

Not tested in other applications.

**Calculated MW** 57 kDa. ([Note](#))

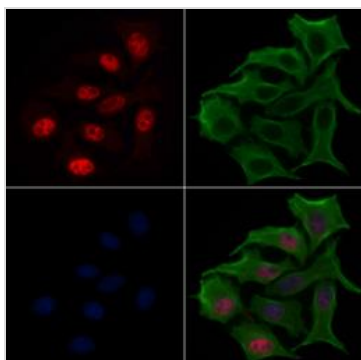
## PROPERTIES

|                      |  |
|----------------------|--|
| <b>Form</b>          | Liquid   |
| <b>Buffer</b>        | PBS pH 7.4, 150mM NaCl, 0.02% sodium azide, 50% glycerol   |
| <b>Storage</b>       | Store as concentrated solution. Centrifuge briefly prior to opening vial. For short-term storage (1-2 weeks), store at 4°C. For long-term storage, aliquot and store at -20°C or below. Avoid multiple freeze-thaw cycles. |
| <b>Concentration</b> | 1 mg/ml (Please refer to the vial label for the specific concentration.)   |
| <b>Immunogen</b>     | A synthesized peptide derived from human RUNX2 around the phosphorylation site of Ser275.  |
| <b>Purification</b>  | Purified by sequential chromatography on phospho-peptide and non-phospho-peptide columns<br>From serum   |
| <b>Conjugation</b>   | Unconjugated   |
| <b>Note</b>          | For laboratory use only. Not for any clinical, therapeutic, or diagnostic use in humans or animals. Not for animal or human consumption.   |



For full product information, images and publications, please visit our [website](#).

DATA IMAGES



**GTX00813 ICC/IF Image**

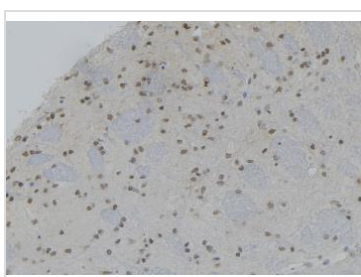
ICC/IF analysis of PFA-fixed HepG2 cells with serum starvation using GTX00813 RUNX2 (phospho Ser275) antibody.

Red : Primary antibody

Green : Tubulin

Permeabilization : 0.1% Triton X-100

Dilution : 1:200

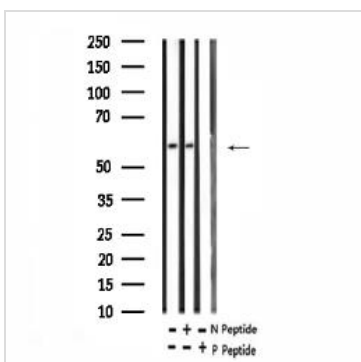


**GTX00813 IHC-P Image**

IHC-P analysis of rat brain tissue using GTX00813 RUNX2 (phospho Ser275) antibody.

Antigen retrieval : Heat mediated antigen retrieval step in citrate buffer

Dilution : 1:100

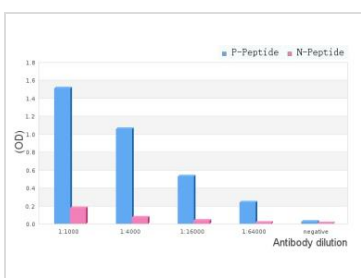


**GTX00813 WB Image**

WB analysis of mouse thymus tissue using GTX00813 RUNX2 (phospho Ser275) antibody pre-incubated with phospho- or non-phospho- peptide.

P-peptide : phospho-peptide

N-peptide : non-phospho-peptide



**GTX00813 ELISA Image**

ELISA analysis of phospho- and non phospho- immunogen peptide using GTX00813 RUNX2 (phospho Ser275) antibody.

P-peptide : phospho-peptide

N-peptide : non-phospho-peptide

Peptides concentration : 1µg/ml



For full product information, images and publications, please visit our [website](#).