



SZABO SCANDIC

Part of Europa Biosite

Produktinformation



Forschungsprodukte & Biochemikalien



Zellkultur & Verbrauchsmaterial



Diagnostik & molekulare Diagnostik



Laborgeräte & Service

Weitere Information auf den folgenden Seiten!
See the following pages for more information!



Lieferung & Zahlungsart

siehe unsere [Liefer- und Versandbedingungen](#)

Zuschläge

- Mindermengenzuschlag
- Trockeneiszuschlag
- Gefahrgutzuschlag
- Expressversand

SZABO-SCANDIC HandelsgmbH

Quellenstraße 110, A-1100 Wien

T. +43(0)1 489 3961-0

F. +43(0)1 489 3961-7

mail@szabo-scandic.com

www.szabo-scandic.com

[linkedin.com/company/szaboscandic](https://www.linkedin.com/company/szaboscandic) 

RBMS3 antibody

Cat No. GTX00828

Host	Rabbit
Clonality	Polyclonal
Isotype	IgG
Application	WB, ICC/IF, IHC-P, ELISA
Reactivity	Human, Mouse, Rat

Package
100 µg

APPLICATION

Application Note

*Optimal dilutions/concentrations should be determined by the researcher.

Suggested dilution	Dilution
WB	0.1-0.5µg/ml
ICC/IF	2µg/ml
IHC-P	0.5-1µg/ml
ELISA	0.1-0.5µg/ml

Note : Recommend using heat mediated antigen retrieval.

Not tested in other applications.

Calculated MW 48 kDa. ([Note](#))

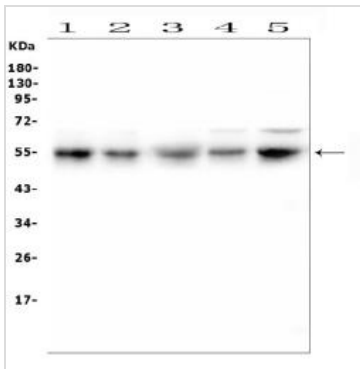
PROPERTIES

Form	Liquid
Buffer	4mg Trehalose, 0.9mg NaCl, 0.2mg Na ₂ HPO ₄ , 0.05mg sodium azide
Storage	Store as concentrated solution. Centrifuge briefly prior to opening vial. For short-term storage (1-2 weeks), store at 4°C. For long-term storage, aliquot and store at -20°C or below. Avoid multiple freeze-thaw cycles.
Concentration	0.5 mg/ml (Please refer to the vial label for the specific concentration.)
Immunogen	E.coli-derived human RBMS3 recombinant protein (Position: T350-P437).
Purification	Purified by antigen-affinity chromatography
Conjugation	Unconjugated
Note	For laboratory use only. Not for any clinical, therapeutic, or diagnostic use in humans or animals. Not for animal or human consumption.



For full product information, images and publications, please visit our [website](#).

DATA IMAGES

**GTX00828 WB Image**

WB analysis of various sample lysates using GTX00828 RBMS3 antibody.

Lane 1 : U2OS whole cell lysates

Lane 2 : PC-3 whole cell lysates

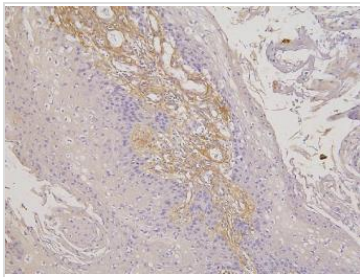
Lane 3 : U-87MG whole cell lysates

Lane 4 : A549 whole cell lysates

Lane 5 : HeLa whole cell lysates

Dilution : 0.5µg/mL

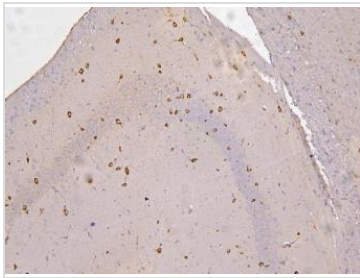
Loading : 50µg of sample under reducing condition

**GTX00828 IHC-P Image**

IHC-P analysis of human oesophagus squama cancer tissue using GTX00828 RBMS3 antibody.

Antigen retrieval : Heat mediated antigen retrieval was performed in citrate buffer (pH6, epitope retrieval solution) for 20 mins

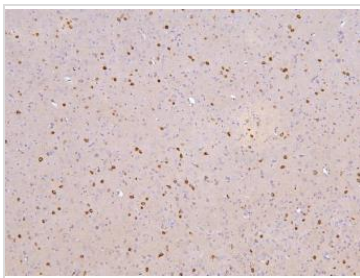
Dilution : 1µg/mL

**GTX00828 IHC-P Image**

IHC-P analysis of mouse brain tissue using GTX00828 RBMS3 antibody.

Antigen retrieval : Heat mediated antigen retrieval was performed in citrate buffer (pH6, epitope retrieval solution) for 20 mins

Dilution : 1µg/mL

**GTX00828 IHC-P Image**

IHC-P analysis of rat brain tissue using GTX00828 RBMS3 antibody.

Antigen retrieval : Heat mediated antigen retrieval was performed in citrate buffer (pH6, epitope retrieval solution) for 20 mins

Dilution : 1µg/mL



For full product information, images and publications, please visit our [website](#).