



SZABO SCANDIC

Part of Europa Biosite

Produktinformation



Forschungsprodukte & Biochemikalien



Zellkultur & Verbrauchsmaterial



Diagnostik & molekulare Diagnostik



Laborgeräte & Service

Weitere Information auf den folgenden Seiten!
See the following pages for more information!



Lieferung & Zahlungsart

siehe unsere [Liefer- und Versandbedingungen](#)

Zuschläge

- Mindermengenzuschlag
- Trockeneiszuschlag
- Gefahrgutzuschlag
- Expressversand

SZABO-SCANDIC HandelsgmbH

Quellenstraße 110, A-1100 Wien

T. +43(0)1 489 3961-0

F. +43(0)1 489 3961-7

mail@szabo-scandic.com

www.szabo-scandic.com

[linkedin.com/company/szaboscandic](https://www.linkedin.com/company/szaboscandic) 

AIM2 antibody

Cat No. GTX00830

Host	Rabbit
Clonality	Polyclonal
Isotype	IgG
Application	WB, IHC-P
Reactivity	Human, Mouse, Rat

Package
100 µg

APPLICATION

Application Note

*Optimal dilutions/concentrations should be determined by the researcher.

Suggested dilution	Dilution
WB	0.1-0.5µg/ml
IHC-P	0.5-1µg/ml

Note : Recommend using heat mediated antigen retrieval.

Not tested in other applications.

Calculated MW 39 kDa. ([Note](#))

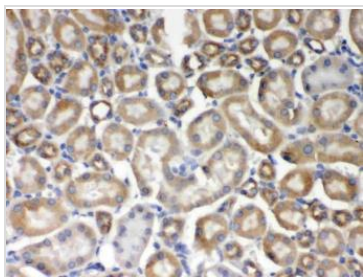
PROPERTIES

Form	Liquid
Buffer	5mg BSA, 0.9mg NaCl, 0.2mg Na ₂ HPO ₄ , 0.05mg sodium azide
Storage	Store as concentrated solution. Centrifuge briefly prior to opening vial. For short-term storage (1-2 weeks), store at 4°C. For long-term storage, aliquot and store at -20°C or below. Avoid multiple freeze-thaw cycles.
Concentration	0.5 mg/ml (Please refer to the vial label for the specific concentration.)
Immunogen	E.coli-derived human AIM2 recombinant protein (Position: L14-H215).
Purification	Purified by antigen-affinity chromatography
Conjugation	Unconjugated
Note	For laboratory use only. Not for any clinical, therapeutic, or diagnostic use in humans or animals. Not for animal or human consumption.

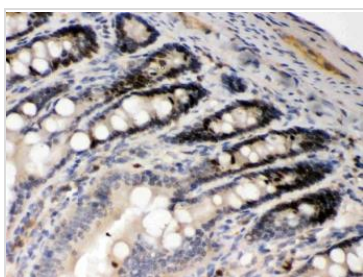


For full product information, images and publications, please visit our [website](#).

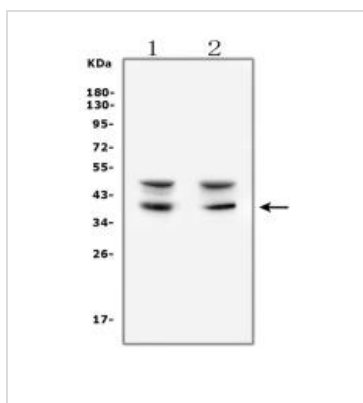
DATA IMAGES

**GTX00830 IHC-P Image**

IHC-P analysis of mouse kidney tissue using GTX00830 AIM2 antibody.

**GTX00830 IHC-P Image**

IHC-P analysis of rat intestine tissue using GTX00830 AIM2 antibody.

**GTX00830 WB Image**

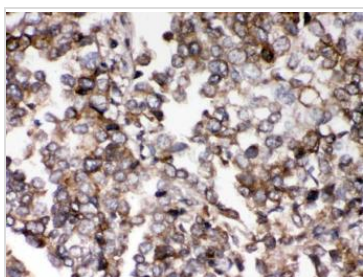
WB analysis of various sample lysates using GTX00830 AIM2 antibody.

Lane 1 : Raji whole cell lysates

Lane 2 : NIH/3T3 whole cell lysates

Dilution : 0.5µg/mL

Loading : 50µg of sample under reducing condition

**GTX00830 IHC-P Image**

IHC-P analysis of human lung cancer tissue using GTX00830 AIM2 antibody.



For full product information, images and publications, please visit our [website](#).