



SZABO SCANDIC

Part of Europa Biosite

Produktinformation



Forschungsprodukte & Biochemikalien



Zellkultur & Verbrauchsmaterial



Diagnostik & molekulare Diagnostik



Laborgeräte & Service

Weitere Information auf den folgenden Seiten!
See the following pages for more information!



Lieferung & Zahlungsart

siehe unsere [Liefer- und Versandbedingungen](#)

Zuschläge

- Mindermengenzuschlag
- Trockeneiszuschlag
- Gefahrgutzuschlag
- Expressversand

SZABO-SCANDIC HandelsgmbH

Quellenstraße 110, A-1100 Wien

T. +43(0)1 489 3961-0

F. +43(0)1 489 3961-7

mail@szabo-scandic.com

www.szabo-scandic.com

[linkedin.com/company/szaboscandic](https://www.linkedin.com/company/szaboscandic) 

TGF beta Receptor I antibody

Cat No. GTX00840

Host	Rabbit
Clonality	Polyclonal
Isotype	IgG
Application	WB, ICC/IF, IHC-P
Reactivity	Human, Mouse, Rat

Package
100 µl

APPLICATION

Application Note

*Optimal dilutions/concentrations should be determined by the researcher.

Suggested dilution	Dilution
WB	1:500 - 1:2000
ICC/IF	1:100-1:500
IHC-P	1:50 - 1:200

Not tested in other applications.

Calculated MW 56 kDa. ([Note](#))

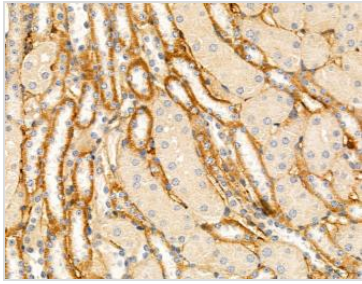
PROPERTIES

Form	Liquid
Buffer	PBS pH 7.4, 150mM NaCl, 0.02% sodium azide, 50% glycerol
Storage	Store as concentrated solution. Centrifuge briefly prior to opening vial. For short-term storage (1-2 weeks), store at 4°C. For long-term storage, aliquot and store at -20°C or below. Avoid multiple freeze-thaw cycles.
Concentration	1 mg/ml (Please refer to the vial label for the specific concentration.)
Immunogen	A synthesized peptide derived from human TGF beta Receptor I , corresponding to a region within the internal amino acids.
Purification	Purified by antigen-affinity chromatography From serum
Conjugation	Unconjugated
Note	For laboratory use only. Not for any clinical, therapeutic, or diagnostic use in humans or animals. Not for animal or human consumption.



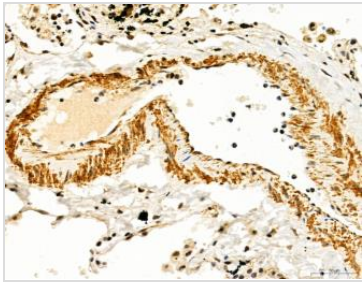
For full product information, images and publications, please visit our [website](#).

DATA IMAGES

**GTX00840 IHC-P Image**

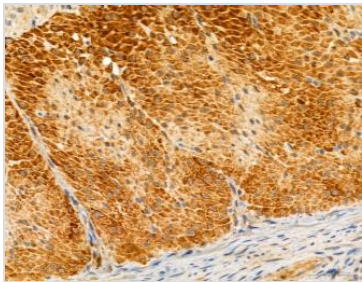
IHC-P analysis of mouse kidney tissue using GTX00840 TGF beta Receptor I antibody. The sample was formaldehyde fixed and a heat mediated antigen retrieval step in citrate buffer was performed.

Dilution : 1:100

**GTX00840 IHC-P Image**

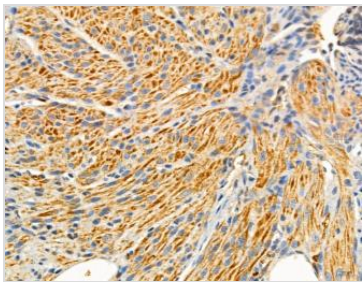
IHC-P analysis of human normal tissues adjacent to lung cancer using GTX00840 TGF beta Receptor I antibody. The sample was formaldehyde fixed and a heat mediated antigen retrieval step in citrate buffer was performed.

Dilution : 1:100

**GTX00840 IHC-P Image**

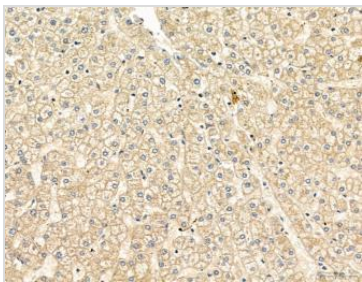
IHC-P analysis of rat stomach tissue using GTX00840 TGF beta Receptor I antibody. Heat mediated antigen retrieval step in citrate buffer was performed.

Dilution : 1:100

**GTX00840 IHC-P Image**

IHC-P analysis of mouse ovary tissue using GTX00840 TGF beta Receptor I antibody. The sample was formaldehyde fixed and a heat mediated antigen retrieval step in citrate buffer was performed.

Dilution : 1:100

**GTX00840 IHC-P Image**

IHC-P analysis of human normal tissues adjacent to liver cancer using GTX00840 TGF beta Receptor I antibody. The sample was formaldehyde fixed and a heat mediated antigen retrieval step in citrate buffer was performed.

Dilution : 1:100



For full product information, images and publications, please visit our [website](#).