



# SZABO SCANDIC

Part of Europa Biosite

## Produktinformation



Forschungsprodukte & Biochemikalien



Zellkultur & Verbrauchsmaterial



Diagnostik & molekulare Diagnostik



Laborgeräte & Service

Weitere Information auf den folgenden Seiten!  
See the following pages for more information!



### Lieferung & Zahlungsart

siehe unsere [Liefer- und Versandbedingungen](#)

### Zuschläge

- Mindermengenzuschlag
- Trockeneiszuschlag
- Gefahrgutzuschlag
- Expressversand

### SZABO-SCANDIC HandelsgmbH

Quellenstraße 110, A-1100 Wien

T. +43(0)1 489 3961-0

F. +43(0)1 489 3961-7

[mail@szabo-scandic.com](mailto:mail@szabo-scandic.com)

[www.szabo-scandic.com](http://www.szabo-scandic.com)

[linkedin.com/company/szaboscandic](https://www.linkedin.com/company/szaboscandic) 

## Fc epsilon R1 alpha antibody [CRA1] (Biotin)

Cat No. GTX00849

<b>Host</b>	Mouse
<b>Clonality</b>	Monoclonal
<b>Isotype</b>	IgG2b
<b>Application</b>	WB, IHC-P, IHC-Fr, FACS, ELISA, Functional Assay
<b>Reactivity</b>	Human, House musk shrew

Package  
50 µg

## APPLICATION

## Application Note

\*Optimal dilutions/concentrations should be determined by the researcher.

Suggested dilution	Dilution
WB	~1 µg /ml
IHC-P	~1 µg /ml
IHC-Fr	Assay dependent
FACS	1-5 µg /ml
ELISA	Assay dependent
Functional Assay	Assay dependent

**Note : Titration of IgE-bound fraction of the Fc epsilon R1 alpha using clone CRA1 and CRA2 antibodies.**

Not tested in other applications.

**Calculated MW** 30 kDa. ( [Note](#) )

## Specificity/Sensitivity

The CRA1 (AER37) monoclonal antibody reacts with the Fc epsilon R1 alpha subunit on a region that does not overlap the region of the IgE binding site, thus it does not compete with IgE for the receptor binding. Since the CRA2 (AER24) monoclonal antibody reacts with the IgE binding site on Fc epsilon R1 alpha, it competes with IgE for the receptor binding. Combining the two antibodies, one can quantitatively measure the amounts of the IgE-bound Fc epsilon R1 alpha.

## PROPERTIES

<b>Form</b>	Liquid
<b>Buffer</b>	Filter-sterilized PBS (pH 7.4), 50% glycerol
<b>Storage</b>	Store as concentrated solution. Centrifuge briefly prior to opening vial. For short-term storage (1-2 weeks), store at 4°C. For long-term storage, aliquot and store at -20°C or below. Avoid multiple freeze-thaw cycles.
<b>Concentration</b>	1.6 mg/ml (Please refer to the vial label for the specific concentration.)
<b>Immunogen</b>	Recombinant extracellular protein of human Fc epsilon R1 alpha; (corresponding to amino acids Met-26-197, where signal peptide is 1-25) Epitope: 26-110 amino acids

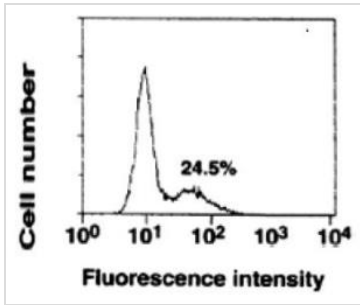


For full product information, images and publications, please visit our [website](#).

Date 2020 / 07 / 27 Page 1 of 2

<b>Purification</b>	Purified IgG From culture supernant
<b>Conjugation</b>	Biotin [Biotin]/[IgG] = 8.9; Lot dependent
<b>Note</b>	For laboratory use only. Not for any clinical, therapeutic, or diagnostic use in humans or animals. Not for animal or human consumption.

DATA IMAGES



**GTX00849 FACS Image**

FACS analysis of U266 cells (pre-incubated with recombinant soluble Fc epsilon R1 alpha protein) using GTX00849 Fc epsilon R1 alpha antibody [CRA1] (Biotin).



For full product information, images and publications, please visit our [website](#).