



# SZABO SCANDIC

Part of Europa Biosite

## Produktinformation



Forschungsprodukte & Biochemikalien



Zellkultur & Verbrauchsmaterial



Diagnostik & molekulare Diagnostik



Laborgeräte & Service

Weitere Information auf den folgenden Seiten!  
See the following pages for more information!



### Lieferung & Zahlungsart

siehe unsere [Liefer- und Versandbedingungen](#)

### Zuschläge

- Mindermengenzuschlag
- Trockeneiszuschlag
- Gefahrgutzuschlag
- Expressversand

### SZABO-SCANDIC HandelsgmbH

Quellenstraße 110, A-1100 Wien

T. +43(0)1 489 3961-0

F. +43(0)1 489 3961-7

[mail@szabo-scandic.com](mailto:mail@szabo-scandic.com)

[www.szabo-scandic.com](http://www.szabo-scandic.com)

[linkedin.com/company/szaboscandic](https://www.linkedin.com/company/szaboscandic) 

## Salmonella enteritidis LPS antibody [se-1]

Cat No. GTX00861

<b>Host</b>	Mouse
<b>Clonality</b>	Monoclonal
<b>Isotype</b>	IgG1
<b>Application</b>	WB, Dot, ELISA, Lateral Flow
<b>Reactivity</b>	E. coli, Vibrio parahaemolyticus, Salmonella typhimurium, Salmonella Enteritidis

Package  
100 µg

## APPLICATION

## Application Note

\*Optimal dilutions/concentrations should be determined by the researcher.

Suggested dilution	Dilution
WB	1:1000-1:2000
Dot	Assay dependent
ELISA	Assay dependent
Lateral Flow	Assay dependent

Not tested in other applications.

**Specificity/Sensitivity** It does not react with other gram-negative food-poisoning bacteria like E. coli, Vibrio parahaemolyticus, and Campylobacter species.

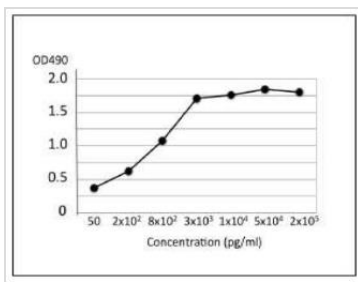
## PROPERTIES

<b>Form</b>	Liquid
<b>Buffer</b>	Filter-sterilized PBS, 50% glycerol
<b>Storage</b>	Store as concentrated solution. Centrifuge briefly prior to opening vial. For short-term storage (1-2 weeks), store at 4°C. For long-term storage, aliquot and store at -20°C or below. Avoid multiple freeze-thaw cycles.
<b>Concentration</b>	0.5 mg/ml (Please refer to the vial label for the specific concentration.)
<b>Immunogen</b>	Crude extract of Salmonella Enteritidis
<b>Purification</b>	Protein A purified
<b>Conjugation</b>	Unconjugated
<b>Note</b>	For laboratory use only. Not for any clinical, therapeutic, or diagnostic use in humans or animals. Not for animal or human consumption.



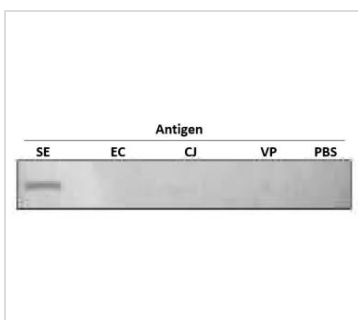
For full product information, images and publications, please visit our [website](#).

DATA IMAGES



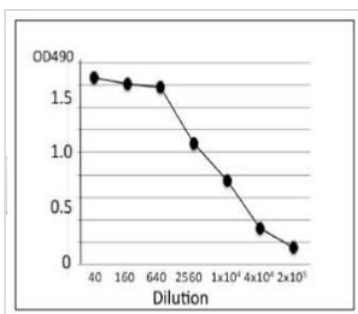
**GTX00861 ELISA Image**

ELISA analysis of crude extract of *S. Enteritidis* using GTX00861 *Salmonella enteritidis* LPS antibody [se-1].  
 Protein coating amount : 100µl per well at indicated amount  
 Antibody amount : 100µl (1:500) per well



**GTX00861 Dot Image**

Extracts of each strain of food poisoning bacteria were coated onto 5 area of a nitrocellulose membrane and reacted with GTX00861 *Salmonella enteritidis* LPS antibody [se-1].  
 GTX00861 recognizes LPS of *S. Enteritidis*, but does not react with any non-*Salmonella* bacteria tested.  
 SE: *S. Enteritidis*  
 EC: *E. coli*  
 CJ: *Campylobacter jejuni*  
 VP: *V. parahaemolyticus*.



**GTX00861 ELISA Image**

ELISA analysis of crude extract of *S. Enteritidis* using GTX00861 *Salmonella enteritidis* LPS antibody [se-1].  
 Protein coating amount : 100µl (1 µg/ml) per well  
 Antibody amount : 100µl at indicated dilution

	ELISA	WB
<i>Salmonella Enteritidis</i> (ATCC13076)	+	LPS
Other 18 isolated strains	+	+
<i>Salmonella Typhimurium</i>	+	+
<i>Campylobacter jejuni/coli</i>	-	-
<i>Vibrio parahaemolyticus</i>	-	-
<i>Escherichia coli</i> (ETEC)	-	-
EHEC (O157:H7)	-	-
<i>Staphylococcus aureus</i>	-	-
<i>Clostridium perfringens</i>	-	-
<i>Bacillus cereus</i>	-	-
LPS from <i>S. Enteritidis</i> *	+	LPS
Purified LPS (from <i>S. Enteritidis</i> )	+	LPS

\* A commercial LPS

**GTX00861 Image**

Reactivity of GTX00861 *Salmonella enteritidis* LPS antibody [se-1] with various food poisoning bacteria.



For full product information, images and publications, please visit our [website](#).