



SZABO SCANDIC

Part of Europa Biosite

Produktinformation



Forschungsprodukte & Biochemikalien



Zellkultur & Verbrauchsmaterial



Diagnostik & molekulare Diagnostik



Laborgeräte & Service

Weitere Information auf den folgenden Seiten!
See the following pages for more information!



Lieferung & Zahlungsart

siehe unsere [Liefer- und Versandbedingungen](#)

Zuschläge

- Mindermengenzuschlag
- Trockeneiszuschlag
- Gefahrgutzuschlag
- Expressversand

SZABO-SCANDIC HandelsgmbH

Quellenstraße 110, A-1100 Wien

T. +43(0)1 489 3961-0

F. +43(0)1 489 3961-7

mail@szabo-scandic.com

www.szabo-scandic.com

[linkedin.com/company/szaboscandic](https://www.linkedin.com/company/szaboscandic) 

Verotoxin / Shiga toxin (SLT-1 + SLT-2) subunit A antibody [vero-01]

Cat No. GTX00863

Host	Mouse
Clonality	Monoclonal
Isotype	IgG1
Application	WB, ELISA, Lateral Flow
Reactivity	Campylobacter jejuni, E. coli, Staphylococcus aureus, Salmonella Enteritidis

Package
100 µg

APPLICATION

Application Note

*Optimal dilutions/concentrations should be determined by the researcher.

Suggested dilution	Dilution
WB	1:500-1:1000
ELISA	Assay dependent
Lateral Flow	Assay dependent

Not tested in other applications.

Specificity/Sensitivity It reacts with subunit A of VT1, VT2 and Stx.

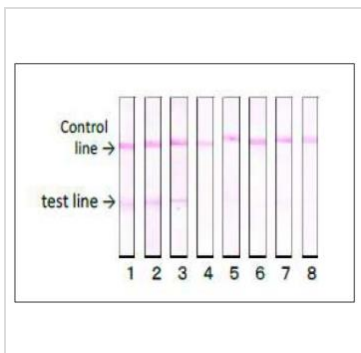
PROPERTIES

Form	Liquid
Buffer	Filter-sterilized PBS, 50% glycerol
Storage	Store as concentrated solution. Centrifuge briefly prior to opening vial. For short-term storage (1-2 weeks), store at 4°C. For long-term storage, aliquot and store at -20°C or below. Avoid multiple freeze-thaw cycles.
Concentration	1 mg/ml (Please refer to the vial label for the specific concentration.)
Immunogen	Culture supernatant of E. coli 0111 (EHEC strain)
Purification	Protein A purified
Conjugation	Unconjugated
Note	For laboratory use only. Not for any clinical, therapeutic, or diagnostic use in humans or animals. Not for animal or human consumption.



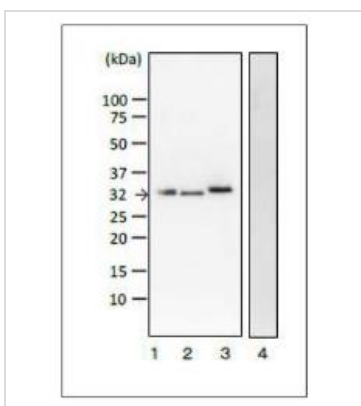
For full product information, images and publications, please visit our [website](#).

DATA IMAGES



GTX00863 Lateral Flow Image

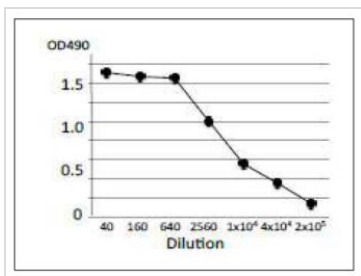
Reactivity of GTX00863 E. coli SLT-1 + SLT-2 antibody [vero-01] with various food poisoning bacteria in immunochromatographic strip test. GTX64191 Verotoxin1 (E. coli) / Shiga Toxin (S. dysenteriae) antibody was coated onto a specific area (test line) of a nitrocellulose membrane, while goat anti-mouse IgG was coated onto another specific area (control line) on the same membrane. Extract of each strain of food poisoning bacteria was mixed with the monoclonal antibody conjugated with colloidal gold. The strip was soaked in the mixture and reacted. (1) E. coli O26, (2) E. coli O111, (3) E. coli O157:H7, (4) E. coli K12, (5) Salmonella Enteritidis, (6) Campylobacter jejuni, (7) Staphylococcus aureus, (8) PBS. MAb (vero-1) reacted with EHEC strains, O26, O111 and O157:H7, but not with other food poisoning bacteria.



GTX00863 WB Image

WB analysis of various samples using GTX00863 Verotoxin / Shiga toxin (SLT-1 + SLT-2) subunit A antibody [vero-01]. Arrow shows subunit A (32kDa) of VT1 and VT2.

- Lane 1 : Culture medium of E. coli O157:H7
- Lane 2 : Purified VT1
- Lane 3 : Purified VT2
- Lane 4 : VT non-producing E. coli



GTX00863 ELISA Image

ELISA analysis of crude extract of E.coli O157:H7 using GTX00863 Verotoxin / Shiga toxin (SLT-1 + SLT-2) subunit A antibody [vero-01].

- Protein coating amount : 100µl (1 µg/ml) per well
- Antibody amount : 100µl at indicated dilution



For full product information, images and publications, please visit our [website](http://www.genetex.com).