



SZABO SCANDIC

Part of Europa Biosite

Produktinformation



Forschungsprodukte & Biochemikalien



Zellkultur & Verbrauchsmaterial



Diagnostik & molekulare Diagnostik



Laborgeräte & Service

Weitere Information auf den folgenden Seiten!
See the following pages for more information!



Lieferung & Zahlungsart

siehe unsere [Liefer- und Versandbedingungen](#)

Zuschläge

- Mindermengenzuschlag
- Trockeneiszuschlag
- Gefahrgutzuschlag
- Expressversand

SZABO-SCANDIC HandelsgmbH

Quellenstraße 110, A-1100 Wien

T. +43(0)1 489 3961-0

F. +43(0)1 489 3961-7

mail@szabo-scandic.com

www.szabo-scandic.com

[linkedin.com/company/szaboscandic](https://www.linkedin.com/company/szaboscandic) 

Bacillus cereus phospholipase C antibody [bc-01]

Cat No. GTX00866

Host	Mouse
Clonality	Monoclonal
Isotype	IgM
Application	WB, ELISA
Reactivity	Clostridium perfringens, Bacillus cereus

Package
100 µg

APPLICATION

Application Note

*Optimal dilutions/concentrations should be determined by the researcher.

Suggested dilution	Dilution
WB	1:500-1:1000
ELISA	Assay dependent

Not tested in other applications.

PROPERTIES

Form	Liquid
Buffer	Filter-sterilized PBS, 50% glycerol
Storage	Store as concentrated solution. Centrifuge briefly prior to opening vial. For short-term storage (1-2 weeks), store at 4°C. For long-term storage, aliquot and store at -20°C or below. Avoid multiple freeze-thaw cycles.
Concentration	1 mg/ml (Please refer to the vial label for the specific concentration.)
Immunogen	Culture supernatant of B. cereus
Purification	Purified IgM
Conjugation	Unconjugated
Note	For laboratory use only. Not for any clinical, therapeutic, or diagnostic use in humans or animals. Not for animal or human consumption.



For full product information, images and publications, please visit our [website](#).

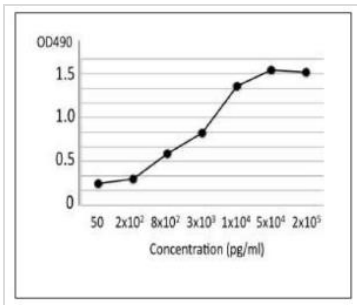
DATA IMAGES

	ELISA	WB
<i>Bacillus cereus</i> (NBRC15306)	+	28K
Other 5 isolated strains	+	
<i>Bacillus subtilis</i>	—	
<i>Staphylococcus aureus</i>	—	
<i>Salmonella Enteritidis</i>	—	—
<i>Escherichia coli</i> (ETEC)	—	—
<i>E. coli</i> 0157:H7 (EHEC)	—	—
Purified PLC (from <i>B.cereus</i>)	+	28K

PLC : Phospholipase C

GTX00866 Image

Reactivities of GTX00866 *Bacillus cereus* phospholipase C antibody [bc-01] with various food poisoning bacter. GTX00866 reacts with a standard strain of *B. cereus* (NBRC15306), 5 isolated strains, and both PLC of *B. cereus* and α -toxin of *C. perfringens*. Antibody reacts with *C. perfringens*, but not with any other food poisoning bacteria. Protein bands, 28 kDa and 43kDa sizes correspond to the expected sizes of the *B. cereus* PLC and *C. perfringens* α -toxin, respectively.

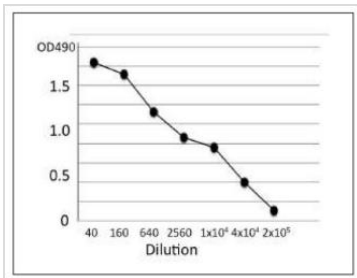


GTX00866 ELISA Image

ELISA analysis of crude extract of *B. cereus* using GTX00866 *Bacillus cereus* phospholipase C antibody [bc-01].

Protein coating amount : 100µl per well at indicated amount

Antibody amount : 100µl (1:500) per well

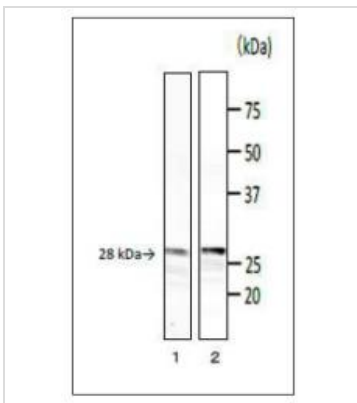


GTX00866 ELISA Image

ELISA analysis of crude extract of *B. cereus* using GTX00866 *Bacillus cereus* phospholipase C antibody [bc-01].

Protein coating amount : 100µl (1 µg/ml) per well

Antibody amount : 100µl at indicated dilution



GTX00866 WB Image

WB analysis of various samples using GTX00866 *Bacillus cereus* phospholipase C antibody [bc-01].

Lane 1 : Culture medium of *B. cereus*

Lane 2 : PC-PLC purified from *B. cereus*

Dilution : 1:1000



For full product information, images and publications, please visit our [website](#).