



# SZABO SCANDIC

Part of Europa Biosite

## Produktinformation



Forschungsprodukte & Biochemikalien



Zellkultur & Verbrauchsmaterial



Diagnostik & molekulare Diagnostik



Laborgeräte & Service

Weitere Information auf den folgenden Seiten!  
See the following pages for more information!



### Lieferung & Zahlungsart

siehe unsere [Liefer- und Versandbedingungen](#)

### Zuschläge

- Mindermengenzuschlag
- Trockeneiszuschlag
- Gefahrgutzuschlag
- Expressversand

### SZABO-SCANDIC HandelsgmbH

Quellenstraße 110, A-1100 Wien

T. +43(0)1 489 3961-0

F. +43(0)1 489 3961-7

[mail@szabo-scandic.com](mailto:mail@szabo-scandic.com)

[www.szabo-scandic.com](http://www.szabo-scandic.com)

[linkedin.com/company/szaboscandic](https://www.linkedin.com/company/szaboscandic) 

## Campylobacter Porin antibody [cj-01]

**Cat No. GTX00867**

<b>Host</b>	Mouse
<b>Clonality</b>	Monoclonal
<b>Isotype</b>	IgG1
<b>Application</b>	WB, Dot, ELISA, Lateral Flow
<b>Reactivity</b>	Campylobacter jejuni, E. coli, Vibrio parahaemolyticus, Salmonella Enteritidis, Campylobacter coli

**Package**  
100 µg

## APPLICATION

**Application Note**

\*Optimal dilutions/concentrations should be determined by the researcher.

Suggested dilution	Dilution
WB	1:500-1:1000
Dot	Assay dependent
ELISA	Assay dependent
Lateral Flow	Assay dependent

Not tested in other applications.

**Specificity/Sensitivity** It reacts with C. jejuni major antigen of 43 kDa.

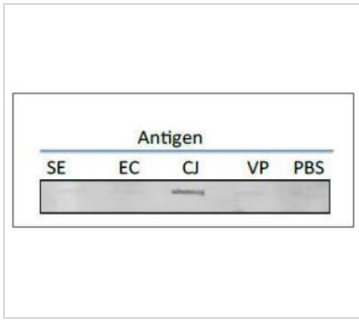
## PROPERTIES

<b>Form</b>	Liquid
<b>Buffer</b>	Filter-sterilized PBS, 50% glycerol
<b>Storage</b>	Store as concentrated solution. Centrifuge briefly prior to opening vial. For short-term storage (1-2 weeks), store at 4°C. For long-term storage, aliquot and store at -20°C or below. Avoid multiple freeze-thaw cycles.
<b>Concentration</b>	1 mg/ml (Please refer to the vial label for the specific concentration.)
<b>Immunogen</b>	Crude extract of Campylobacter jejuni
<b>Purification</b>	Protein A purified
<b>Conjugation</b>	Unconjugated
<b>Note</b>	For laboratory use only. Not for any clinical, therapeutic, or diagnostic use in humans or animals. Not for animal or human consumption.



For full product information, images and publications, please visit our [website](#).

DATA IMAGES



**GTX00867 Dot Image**

Test of reactivity of GTX00867 Campylobacter Porin antibody [cj-01] with several food poisoning bacteria in slot blot test. Extract of each strain of food poisoning bacteria was coated onto 5 areas of a nitrocellulose membrane and reacted with GTX00867. GTX00867 specifically reacts with extract of *C. jejuni*.

SE: Salmonella Enteritidis

EC: Escherichia coli

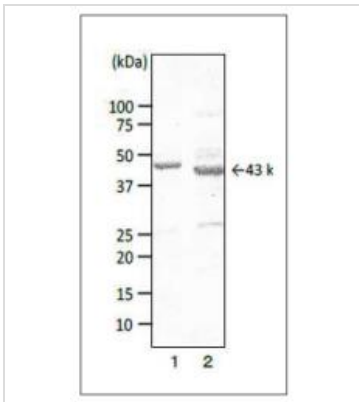
CJ: *C. jejuni*

VP: *Vibrio parahaemolyticus*

	ELISA	WB
<i>Campylobacter jejuni</i> (JCM2529)	+	43K
Other 3 isolated strains	+	
<i>Campylobacter coli</i> (JCM2013)	+	44K
<i>Salmonella Enteritidis</i>	—	—
<i>Vibrio parahaemolyticus</i>	—	—
<i>Escherichia coli</i> (ETEC)	—	—
EHEC (O157:H7)	—	—
<i>Staphylococcus aureus</i>	—	—
<i>Clostridium perfringens</i>	—	—
<i>Bacillus cereus</i>	—	—

**GTX00867 Image**

Specific reactivity of GTX00867 Campylobacter Porin antibody [cj-01] with various food poisoning bacteria by ELISA and WB.

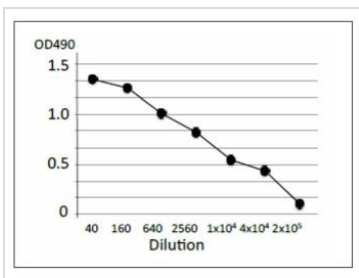


**GTX00867 WB Image**

WB analysis of various samples using GTX00867 Campylobacter Porin antibody [cj-01]. It recognizes porins in extracts of *C. coli* and *C. jejuni* as 44 kDa protein and 43 kDa protein, respectively.

Lane 1 : Crude extract of *Campylobacter coli*

Lane 2 : Crude extract of *Campylobacter jejuni*



**GTX00867 ELISA Image**

ELISA analysis of crude extract of *Campylobacter jejuni* using GTX00867 Campylobacter Porin antibody [cj-01].

Protein coating amount : 100µl (1 µg/ml) per well

Antibody amount : 100µl at indicated dilution



For full product information, images and publications, please visit our [website](#).