



SZABO SCANDIC

Part of Europa Biosite

Produktinformation



Forschungsprodukte & Biochemikalien



Zellkultur & Verbrauchsmaterial



Diagnostik & molekulare Diagnostik



Laborgeräte & Service

Weitere Information auf den folgenden Seiten!
See the following pages for more information!



Lieferung & Zahlungsart

siehe unsere [Liefer- und Versandbedingungen](#)

Zuschläge

- Mindermengenzuschlag
- Trockeneiszuschlag
- Gefahrgutzuschlag
- Expressversand

SZABO-SCANDIC HandelsgmbH

Quellenstraße 110, A-1100 Wien

T. +43(0)1 489 3961-0

F. +43(0)1 489 3961-7

mail@szabo-scandic.com

www.szabo-scandic.com

[linkedin.com/company/szaboscandic](https://www.linkedin.com/company/szaboscandic) 

POLH antibody [5H10]

Cat No. GTX00871

Host	Mouse
Clonality	Monoclonal
Isotype	IgG1
Application	WB, ICC/IF
Reactivity	Human

Package
100 µg

APPLICATION

Application Note

*Optimal dilutions/concentrations should be determined by the researcher.

Suggested dilution	Dilution
WB	1:500-1:2000
ICC/IF	1:200-1:1000

Not tested in other applications.

Calculated MW 78 kDa. ([Note](#))

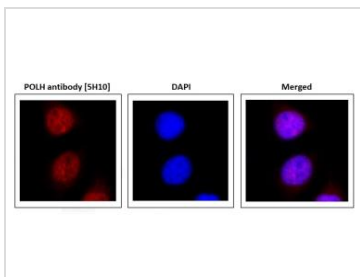
PROPERTIES

Form	Liquid
Buffer	Filter-sterilized PBS, 50% glycerol
Storage	Store as concentrated solution. Centrifuge briefly prior to opening vial. For short-term storage (1-2 weeks), store at 4°C. For long-term storage, aliquot and store at -20°C or below. Avoid multiple freeze-thaw cycles.
Concentration	1 mg/ml (Please refer to the vial label for the specific concentration.)
Immunogen	Human recombinant full-size Pol eta tagged with His6
Purification	Purified by salting-out and ion-exchange chromatography From culture supernant
Conjugation	Unconjugated
Note	For laboratory use only. Not for any clinical, therapeutic, or diagnostic use in humans or animals. Not for animal or human consumption.



For full product information, images and publications, please visit our [website](#).

DATA IMAGES

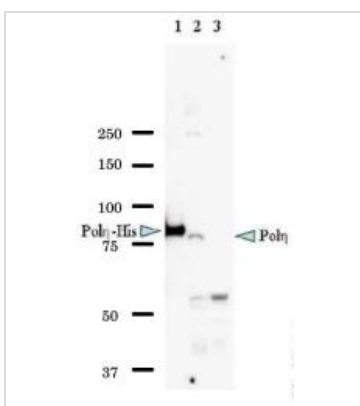
**GTX00871 ICC/IF Image**

ICC/IF analysis of HeLa cells using GTX00871 POLH antibody [5H10].

Fixation : 4% PFA, overnight

Permeabilization : 0.25% Triton X-100 in PBS, 10 min

Dilution : 1:1000

**GTX00871 WB Image**

WB analysis of various samples using GTX00871 POLH antibody [5H10].

Lane 1 : Recombinant full-size Pol eta (POLH) with 6XHis tag at C-terminus

Lane 2 : HeLa whole cell lysate (~40 µg)

Lane 3 : XP2SA (XP-V) whole cell lysate (~40 µg)



For full product information, images and publications, please visit our [website](https://www.genetex.com).