



SZABO SCANDIC

Part of Europa Biosite

Produktinformation



Forschungsprodukte & Biochemikalien



Zellkultur & Verbrauchsmaterial



Diagnostik & molekulare Diagnostik



Laborgeräte & Service

Weitere Information auf den folgenden Seiten!
See the following pages for more information!



Lieferung & Zahlungsart

siehe unsere [Liefer- und Versandbedingungen](#)

Zuschläge

- Mindermengenzuschlag
- Trockeneiszuschlag
- Gefahrgutzuschlag
- Expressversand

SZABO-SCANDIC HandelsgmbH

Quellenstraße 110, A-1100 Wien

T. +43(0)1 489 3961-0

F. +43(0)1 489 3961-7

mail@szabo-scandic.com

www.szabo-scandic.com

[linkedin.com/company/szaboscandic](https://www.linkedin.com/company/szaboscandic) 

Clostridium perfringens enterotoxin (CPE) antibody

Cat No. GTX00879

Host	Rabbit
Clonality	Polyclonal
Isotype	IgG
Application	WB, IP, Dot, ELISA
Reactivity	Clostridium perfringens

Package
200 µg

APPLICATION

Application Note

*Optimal dilutions/concentrations should be determined by the researcher.

Suggested dilution	Dilution
WB	1:1000-1:2000
IP	1:200-1:500
Dot	1:20,000- 1:100,000
ELISA	1:1000

Not tested in other applications.

Calculated MW 35 kDa. ([Note](#))

Specificity/Sensitivity This antibody is useful for detecting food-poisoning strains of Clostridium perfringens enterotoxin.

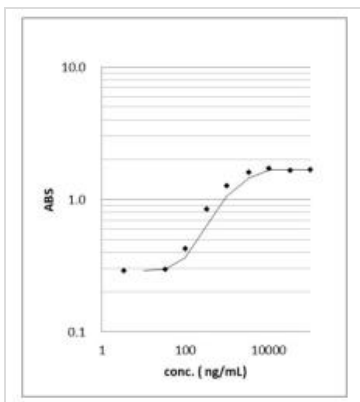
PROPERTIES

Form	Liquid
Buffer	Filter-sterilized PBS, 50% glycerol
Storage	Store as concentrated solution. Centrifuge briefly prior to opening vial. For short-term storage (1-2 weeks), store at 4°C. For long-term storage, aliquot and store at -20°C or below. Avoid multiple freeze-thaw cycles.
Concentration	4 mg/ml (Please refer to the vial label for the specific concentration.)
Immunogen	Highly purified enterotoxin from Clostridium perfringens, strain NCTC8239
Purification	Purified IgG
Conjugation	Unconjugated
Note	For laboratory use only. Not for any clinical, therapeutic, or diagnostic use in humans or animals. Not for animal or human consumption.



For full product information, images and publications, please visit our [website](#).

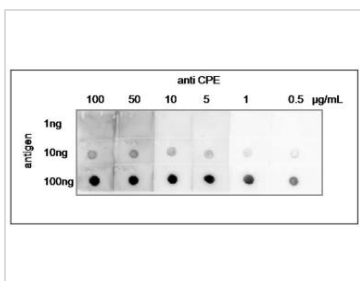
DATA IMAGES



GTX00879 ELISA Image

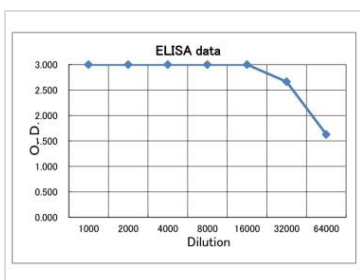
ELISA analysis of purified *C. perfringence* enterotoxin using GTX00879 *Clostridium perfringens* enterotoxin (CPE) antibody.

Protein coating amount : 100µl per well at indicated amount
 Antibody amount : 100µl (1:1000) per well



GTX00879 Dot Image

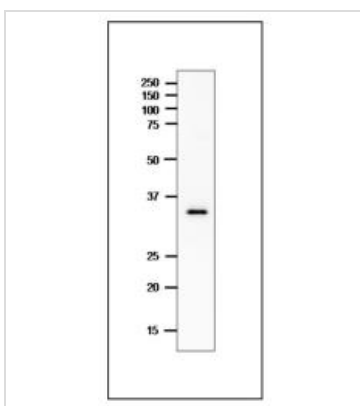
Dot blot of CPE with GTX00879 *Clostridium perfringens* enterotoxin (CPE) antibody. Indicated amounts of purified *C. perfringence* enterotoxin were spotted on nitrocellulose membrane and reacted with the indicated concentrations of GTX00879 *Clostridium perfringens* CPE enterotoxin antibody for 60 min.



GTX00879 ELISA Image

ELISA analysis of purified *C. perfringence* enterotoxin using GTX00879 *Clostridium perfringens* enterotoxin (CPE) antibody.

Protein coating amount : 100µl (0.2 µg) per well
 Antibody amount : 100µl at indicated dilution



GTX00879 WB Image

WB analysis of crude extract of *C. perfringens* using GTX00879 *Clostridium perfringens* enterotoxin (CPE) antibody.

Dilution : 1 µg/ml
 SDS-PAGE : 12.5%



For full product information, images and publications, please visit our [website](#).